

# OPEN HOUSE

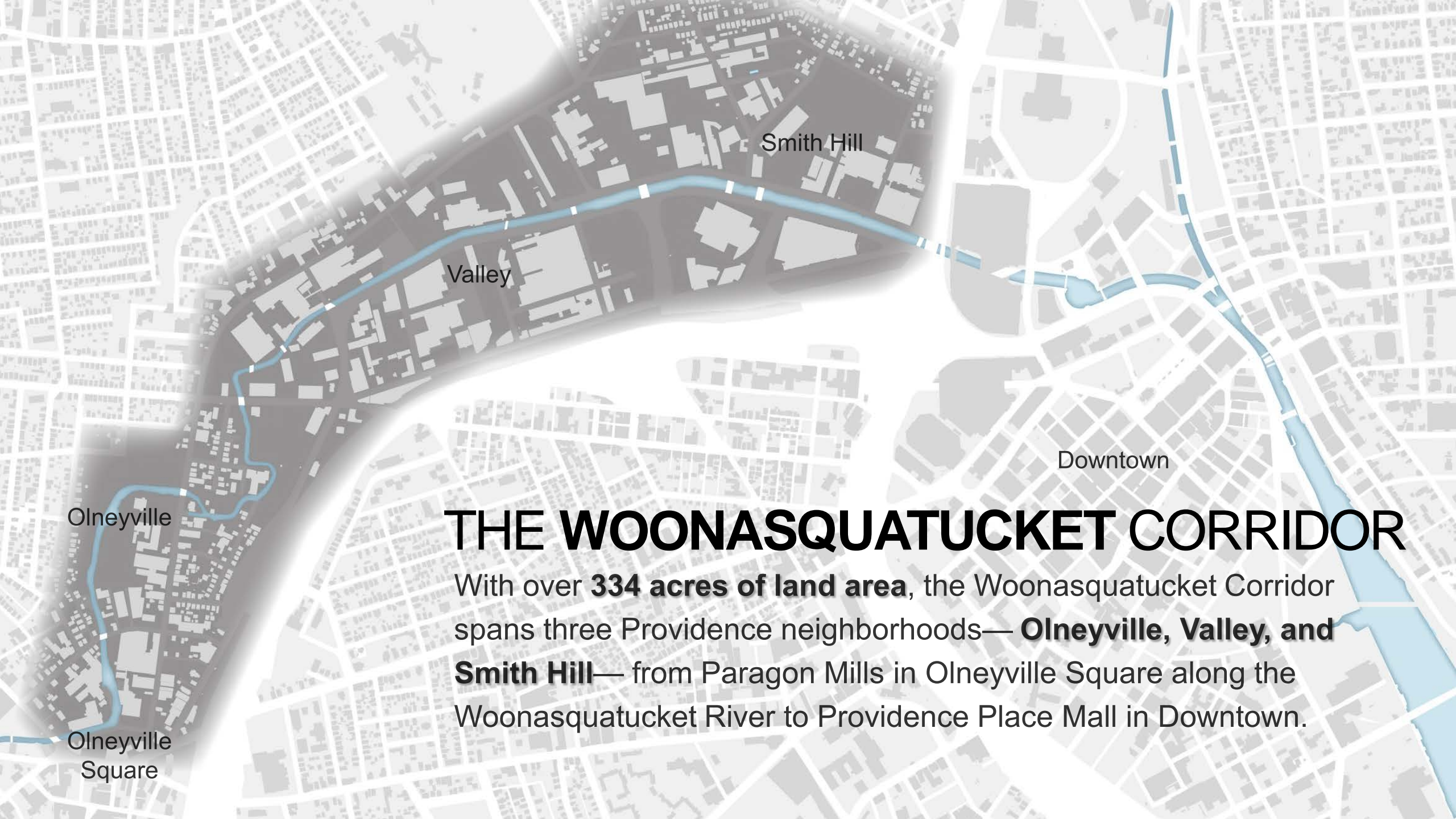
## WOONASQUATUCKET VISION PLAN

**FEB 28**  
6:00-8:00PM  
THE WURKS  
TINGLEY ST



**PLANNING AND DEVELOPMENT**  
Mayor Jorge O. Elorza | City of Providence





Smith Hill

Valley

Downtown

Olneyville

Olneyville  
Square

# THE WOONASQUATUCKET CORRIDOR

With over **334 acres of land area**, the Woonasquatucket Corridor spans three Providence neighborhoods—**Olneyville, Valley, and Smith Hill**—from Paragon Mills in Olneyville Square along the Woonasquatucket River to Providence Place Mall in Downtown.

With **funding from the US Environmental Protection Agency (EPA)**, the City of Providence worked closely with community partners to plan for the future of this important area.

The Vision Plan will be used to:

- guide and prioritize cleanup of former industrial sites and the many investments planned and underway in the Woonasquatucket Corridor;
- determine needed public investments;
- visualize what desirable reinvestment looks like; and
- advocate and secure resources for implementation.

























Rhode Island

2-1-1

United Way  
United Way of Rhode Island

LIVE UNITED

LIVE UNITED

LIVE UNITED

LIVE UNITED

LIVE UNITED

LIVE UNITED

LIVE UNITED

LIVE UNITED

LIVE UNITED

Cross Shield

CBSP.com

SCHE

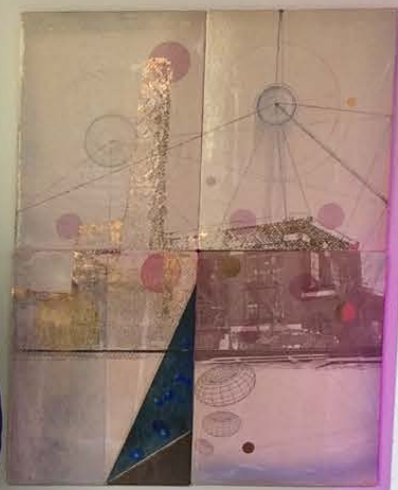




3TG  
IDEAS

















# A VISION FOR THE FUTURE

A successful planning initiative hinges on the ability to **translate the hopes and dreams of a community** into real-world, actionable items that can be taken as individual steps to reaching a common neighborhood vision.

*Community Input*



Community  
Priorities

Strategies &  
Specific  
Actions

Vision for 6  
Catalyst  
Sites

Illustrative  
Plans &  
Strategies





COMMUNITY PRIORITY:

# **IMPROVE** **SUSTAINABILITY** **& RESILIENCY**

Remediate Brownfield Sites

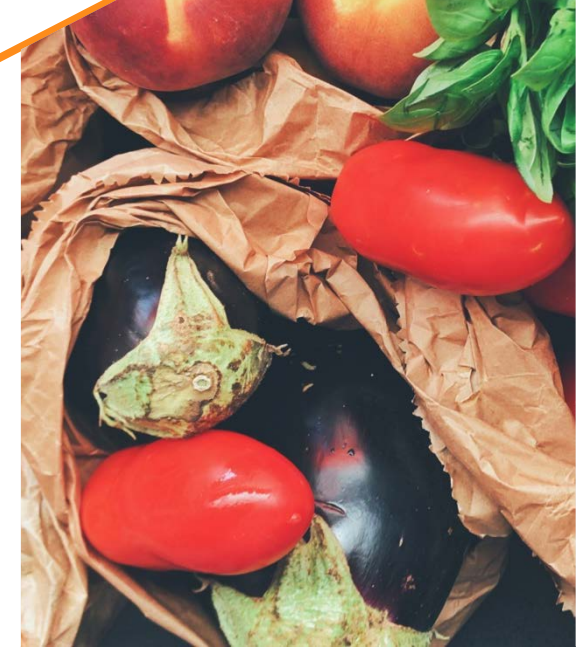
Plan for Sea Level Rise & Inland Flooding

Reduce Vehicle Miles Traveled

Increase Use of Electric Vehicles

Encourage Green Building Practices

Build Ongoing Capacity around Resiliency



COMMUNITY PRIORITY:

# **SUPPORT & GROW EXISTING ART/FOOD/MAKER CLUSTER**

Establish an Innovation District Focused on Arts, Food, & Makers in the  
Woonasquatucket Corridor

Support the Business of Being an Artist, Maker, & Food Producer

Connect Existing Residents & Businesses to Job Opportunities

Provide More Access to Local Food & Fresh Produce



COMMUNITY PRIORITY:

# IMPROVE ACCESS & CONNECTIVITY

Retain Neighborhood Jobs & Housing Patterns

Rehabilitate & Build Bridges Across the River

Strengthen Gateways to the Woonasquatucket Corridor

Reduce Block Sizes

Improve Public Transit Service

Tie Into Citywide Bike Network







COMMUNITY PRIORITY:

# IMPROVE ACCESS & CONNECTIVITY

Make Complete Streets a Standard Practice

Design Streets to Balance Industrial Needs with  
Safety for all Users

Use Demonstration Projects to Quickly,  
Inexpensively Improve Street Safety

Improve Pedestrian Safety & Comfort

Implement a Park Once Strategy for the District





*“Improve without displacement.”*

COMMUNITY PRIORITY:

# **PRESERVE & CREATE** **AFFORDABLE SPACE**

Preserve & Create Artist & Maker Space

Reduce Conflicts between Existing Activities & Economic Growth

Preserve and Create Affordable Housing

*‘Don't make it too pretty. Keep the artist.’*



COMMUNITY PRIORITY:

# ENHANCE & MAINTAIN PUBLIC SPACES & THE WOONASQUATUCKET RIVER

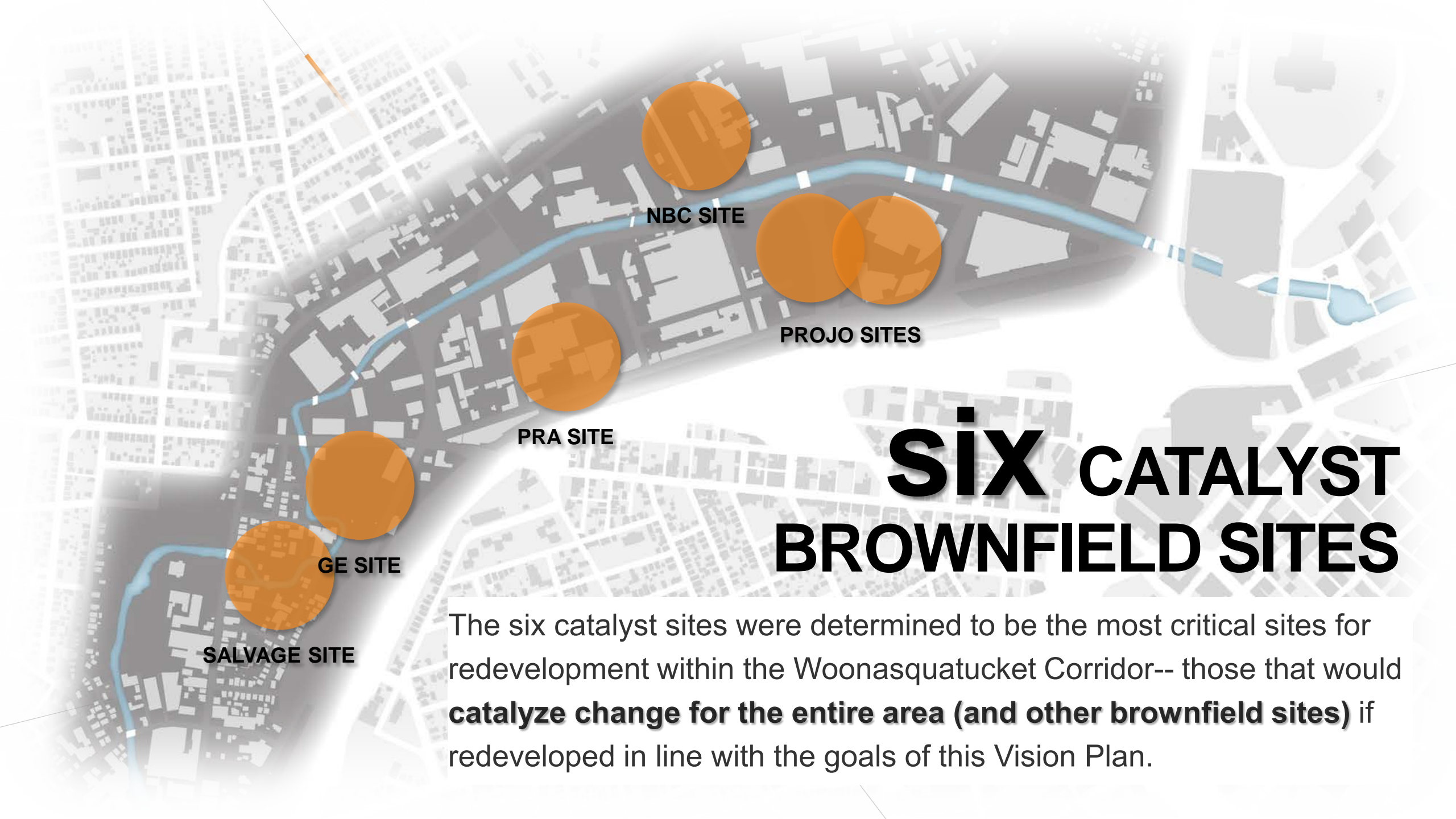


Enhance the Woonasquatucket River

Create Flexible & Multi-Functional  
Civic Spaces

Celebrate Art in Public Space





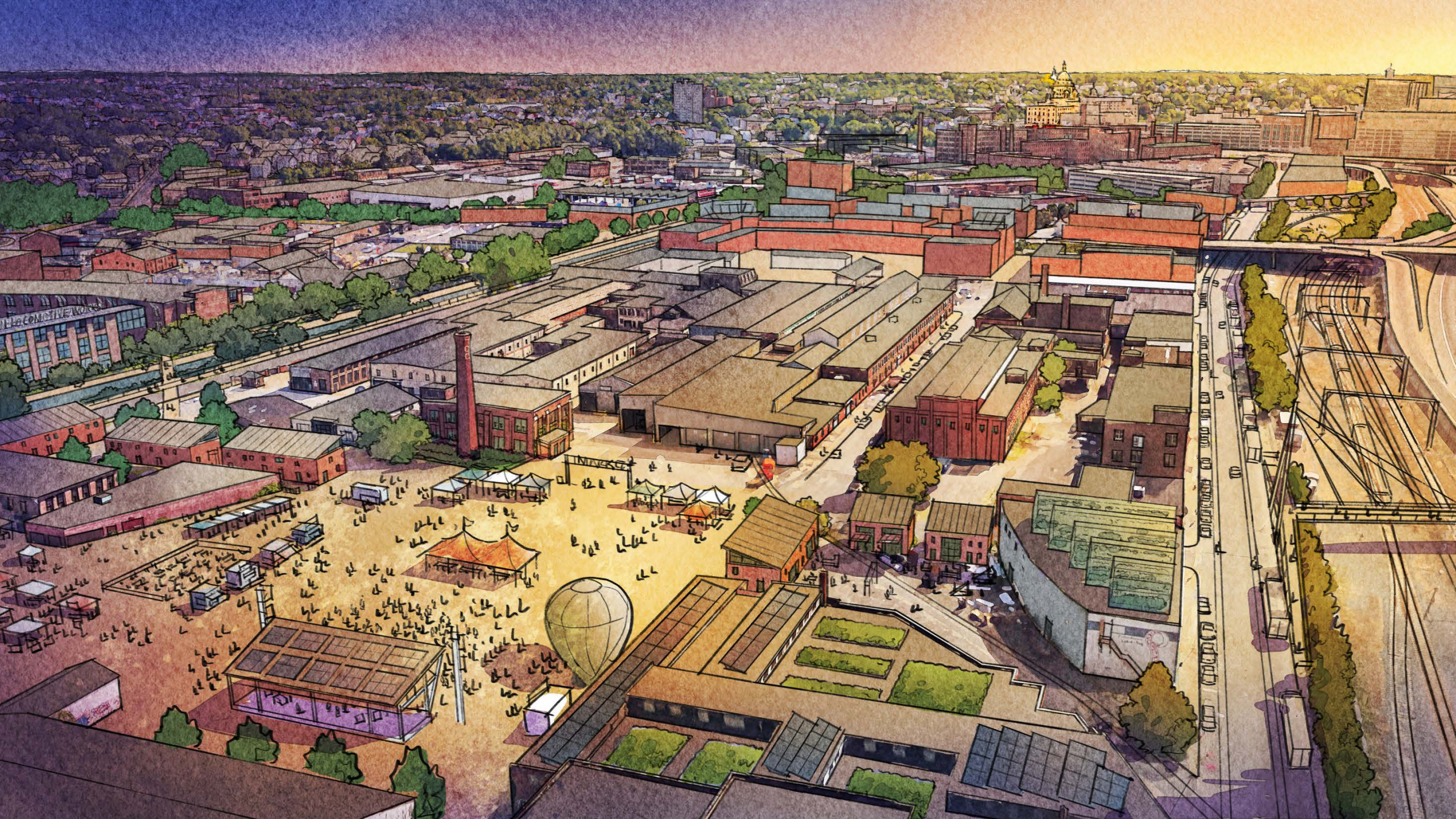
# six CATALYST BROWNFIELD SITES

The six catalyst sites were determined to be the most critical sites for redevelopment within the Woonasquatucket Corridor-- those that would **catalyze change for the entire area (and other brownfield sites)** if redeveloped in line with the goals of this Vision Plan.





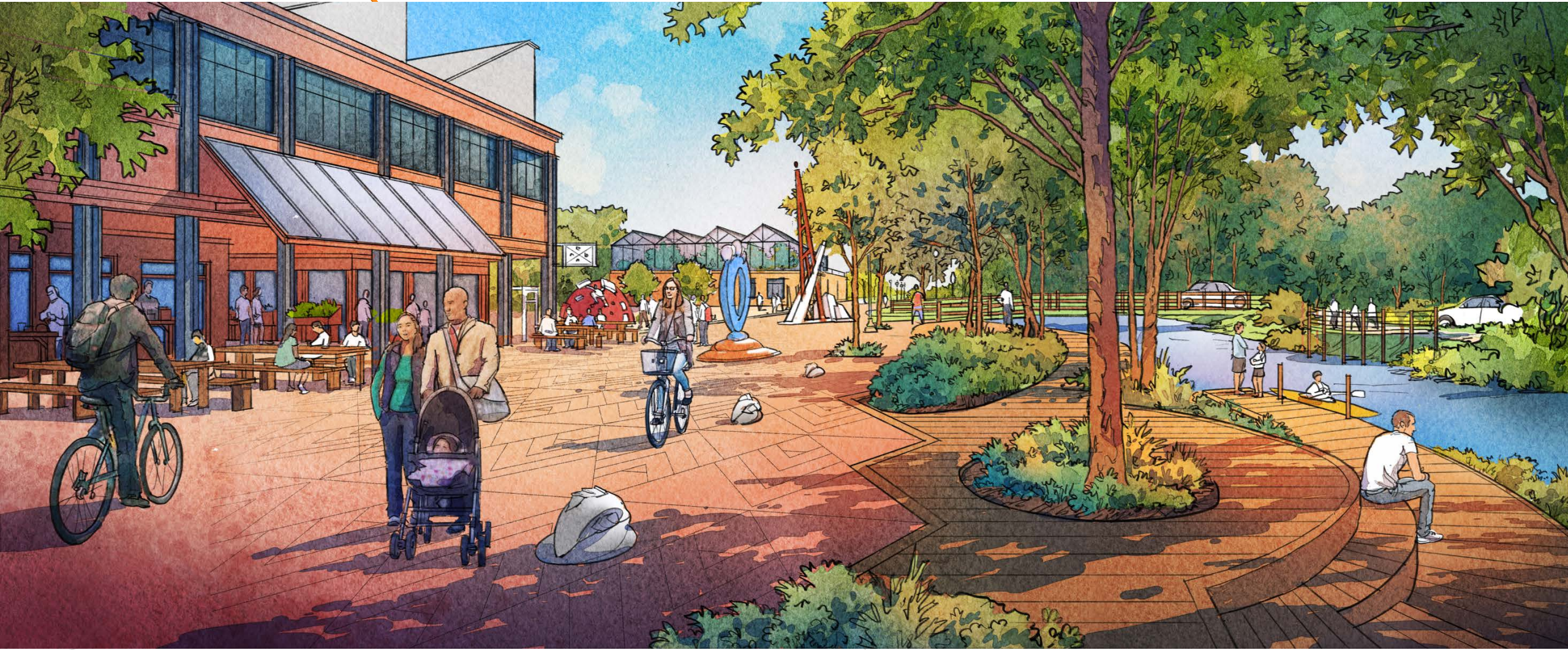












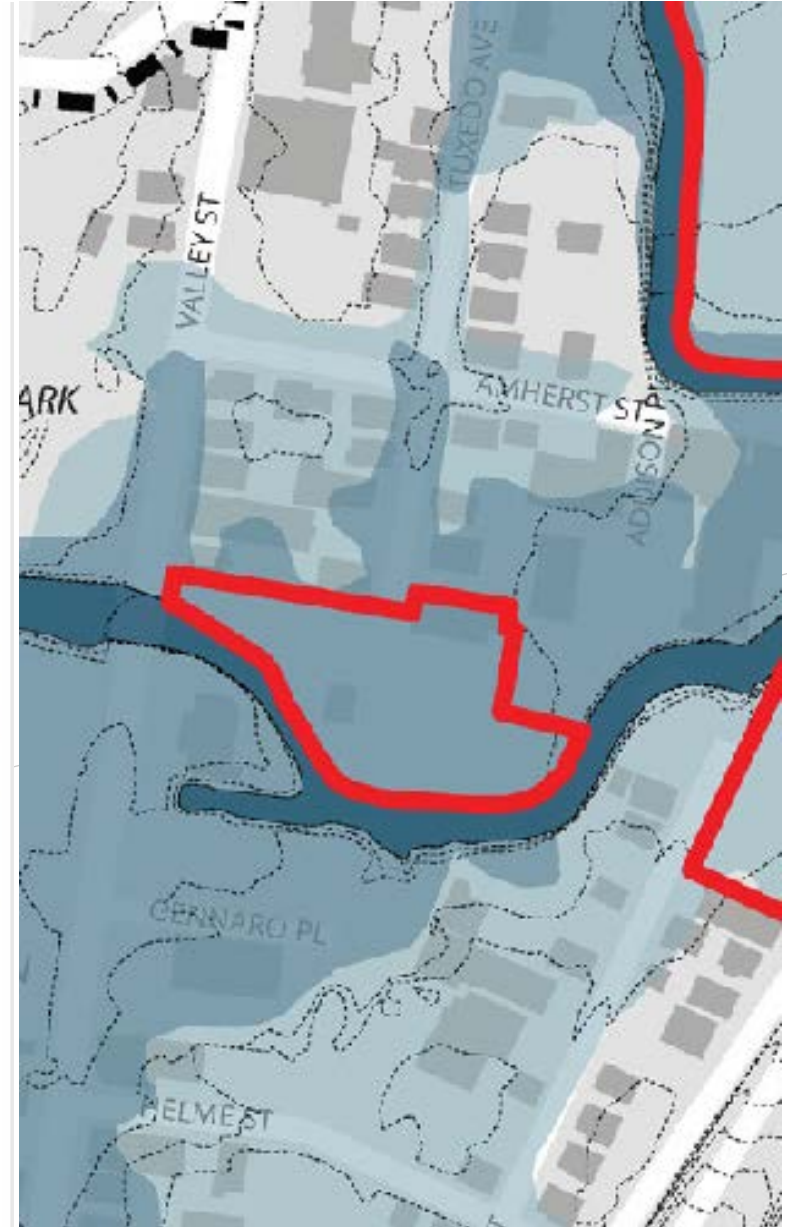
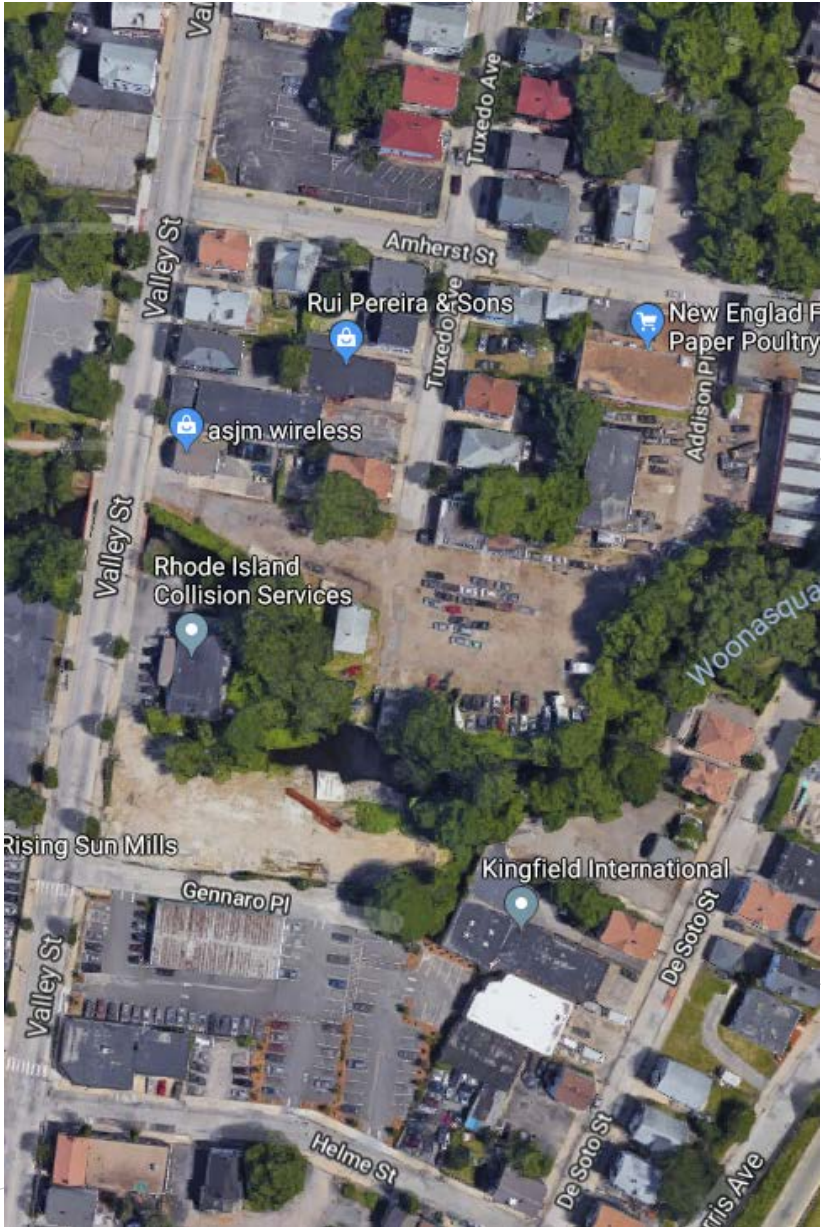


















**Full draft plan will be posted to the project  
website next week!**

[www.providenceri.gov/planning/woonasquatucket](http://www.providenceri.gov/planning/woonasquatucket)





# FOR MORE INFORMATION:

**website:** [www.providenceri.gov/planning/woonasquatucket](http://www.providenceri.gov/planning/woonasquatucket)

**email:** [apenniman@providenceri.gov](mailto:apenniman@providenceri.gov)

**facebook/twitter:** [@provplanning](#)

