

A Community Conversation about the future of Broad Street

MARCH 11, 2017

CITY OF PROVIDENCE
DEPARTMENT OF PLANNING AND DEVELOPMENT
MAYOR JORGE O. ELORZA
BONNIE NICKERSON, AICP, DIRECTOR



Agenda

- ▶ **Welcome**
- ▶ **Presentation**
 - ▶ Southside context and demographics
 - ▶ Planning and development: How it works
 - ▶ Past plans and their accomplishments, upcoming investments
- ▶ **Small Group Discussions**
 - ▶ Your vision for Broad Street
 - ▶ Your ideas for redeveloping the Saint Joseph's campus
 - ▶ Other ideas and concerns related to Broad Street
- ▶ **Report-Back**
- ▶ **Next Steps**

Agenda

- ▶ Welcome
- ▶ **Presentation**
 - ▶ Southside context and demographics
 - ▶ Planning and development: How it works
 - ▶ Past plans and their accomplishments, upcoming investments
- ▶ **Small Group Discussions**
 - ▶ Your vision for Broad Street
 - ▶ Your ideas for redeveloping the Saint Joseph's campus
 - ▶ Other ideas and concerns related to Broad Street
- ▶ **Report-Back**
- ▶ **Next Steps**

A Community Conversation about the future of Broad Street

MARCH 11, 2017

CITY OF PROVIDENCE
DEPARTMENT OF PLANNING AND DEVELOPMENT
MAYOR JORGE O. ELORZA
BONNIE NICKERSON, AICP, DIRECTOR



Agenda

- ▶ **Welcome**
- ▶ **Presentation**
 - ▶ [Southside context and demographics](#)
 - ▶ Planning and development: How it works
 - ▶ Past plans and their accomplishments, upcoming investments
- ▶ **Small Group Discussions**
 - ▶ Your vision for Broad Street
 - ▶ Your ideas for redeveloping the Saint Joseph's campus
 - ▶ Other ideas and concerns related to Broad Street
- ▶ **Report-Back**
- ▶ **Next Steps**

Study Area

- 2.6 miles from Crossroads to Cranston line
- 30,000 people living within 1/3 mile of Broad Street (less than a 10 minute walk)

Upper South
Providence

Lower South
Providence

Broad Street

Washington Park

Elmwood

South Elmwood

Data Sources: Unless otherwise noted, all data is adapted from the US Census 2015 American Community Survey. Census tracts 1.01, 1.02, 2, 3, 4, 5, 7, and 12 were used to represent the study area.



1700



1939



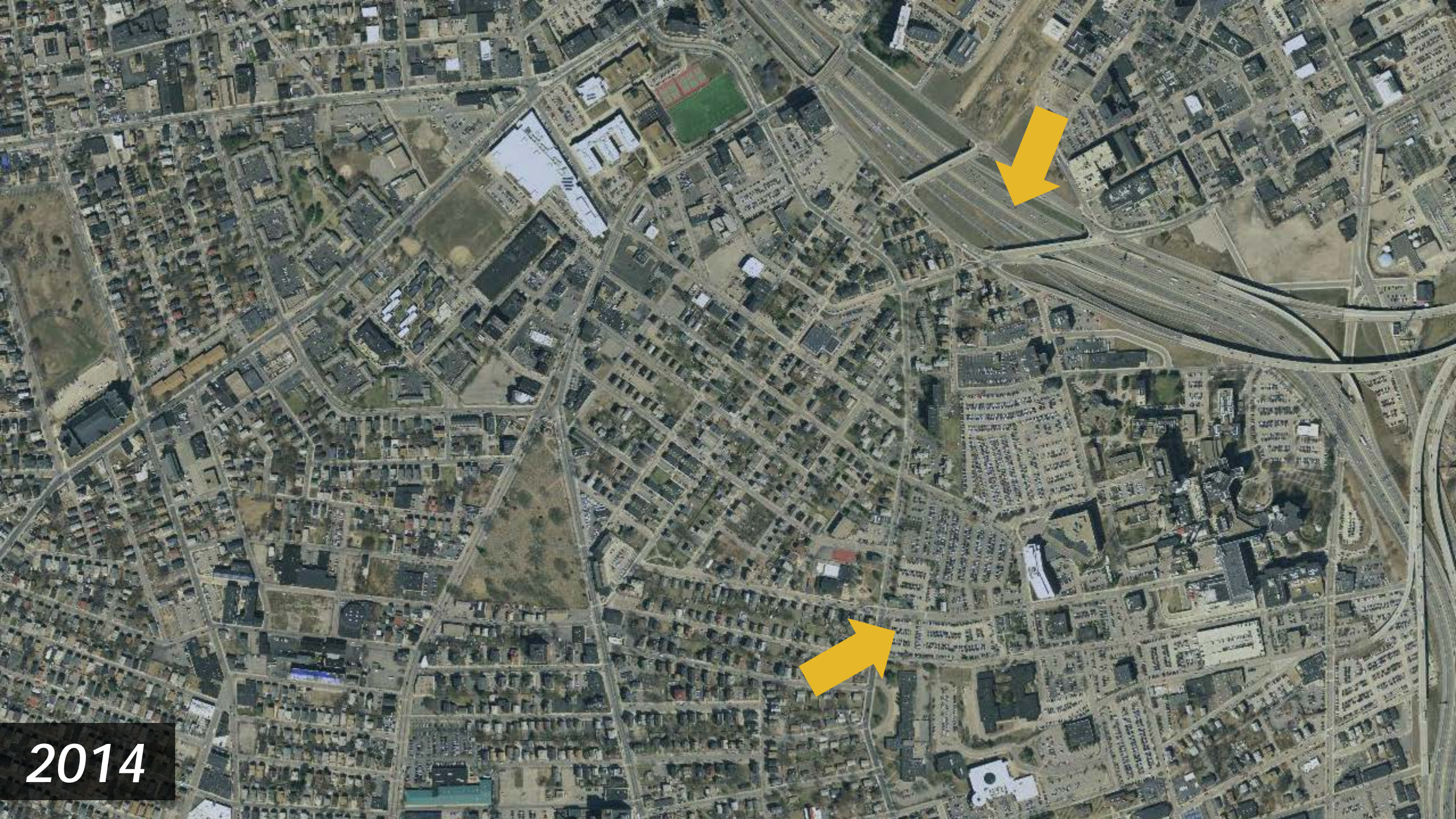
1962



1972



1981



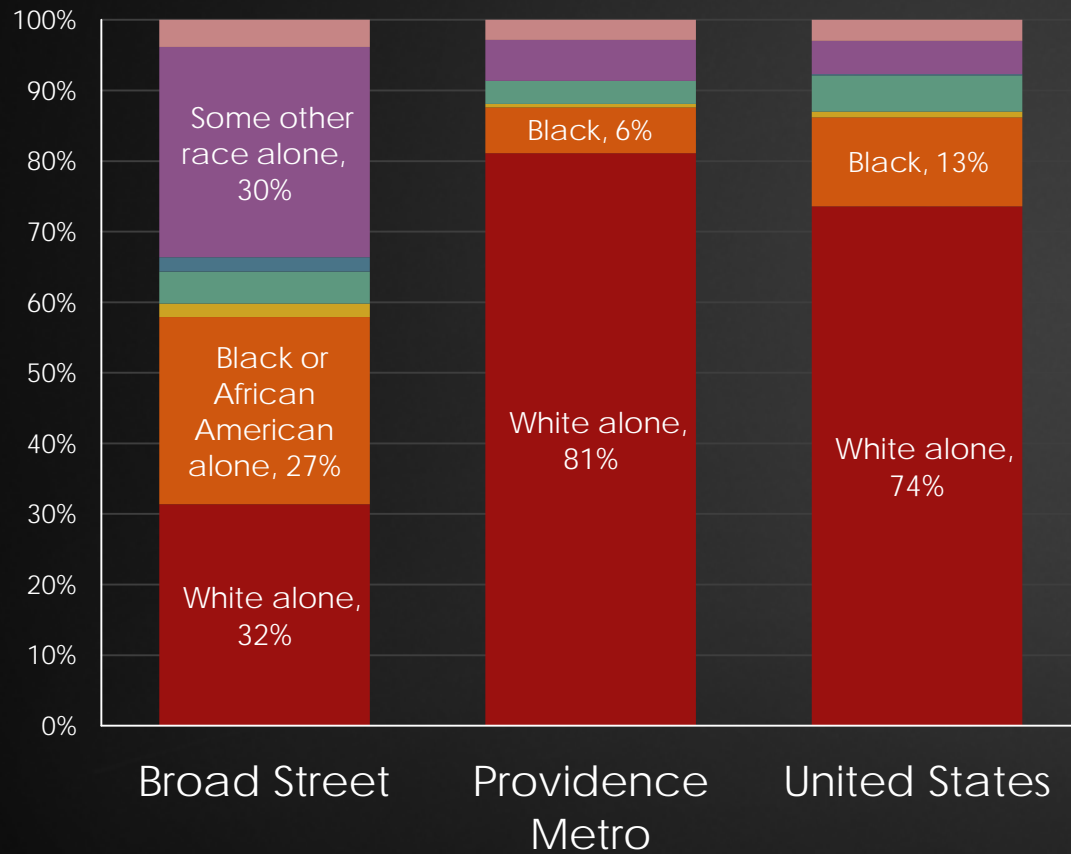
2014



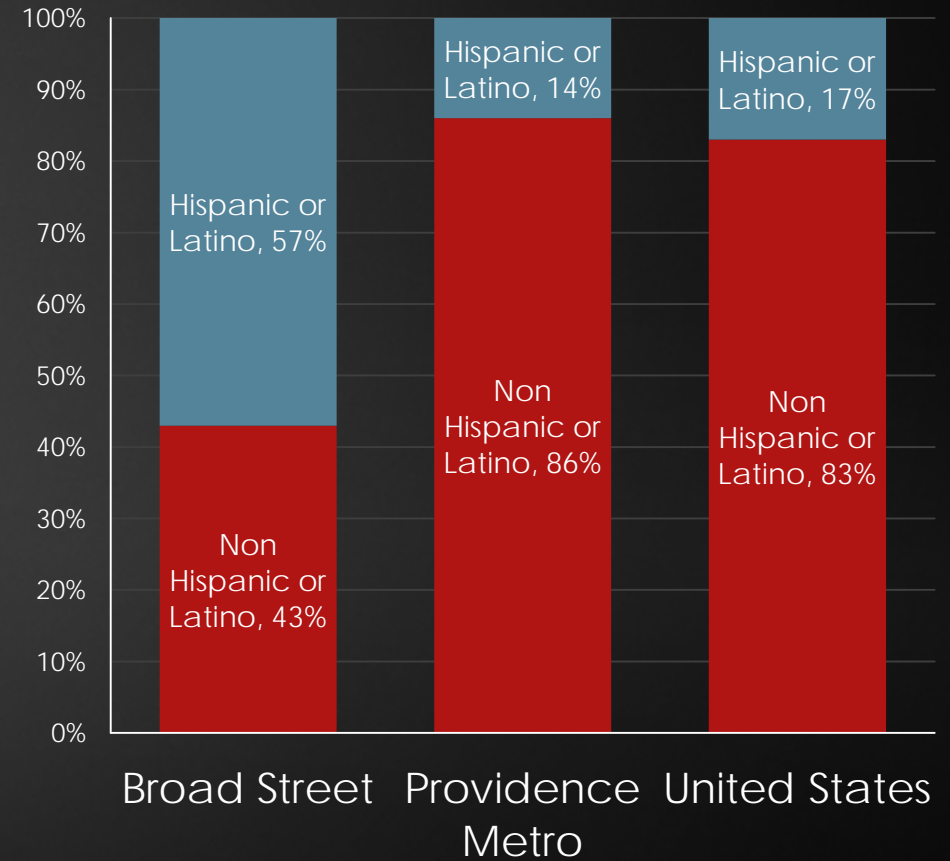
1939

Broad Street: Diversity

Race



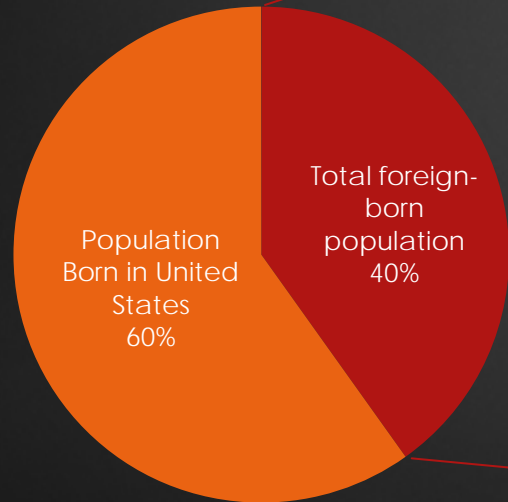
Ethnicity



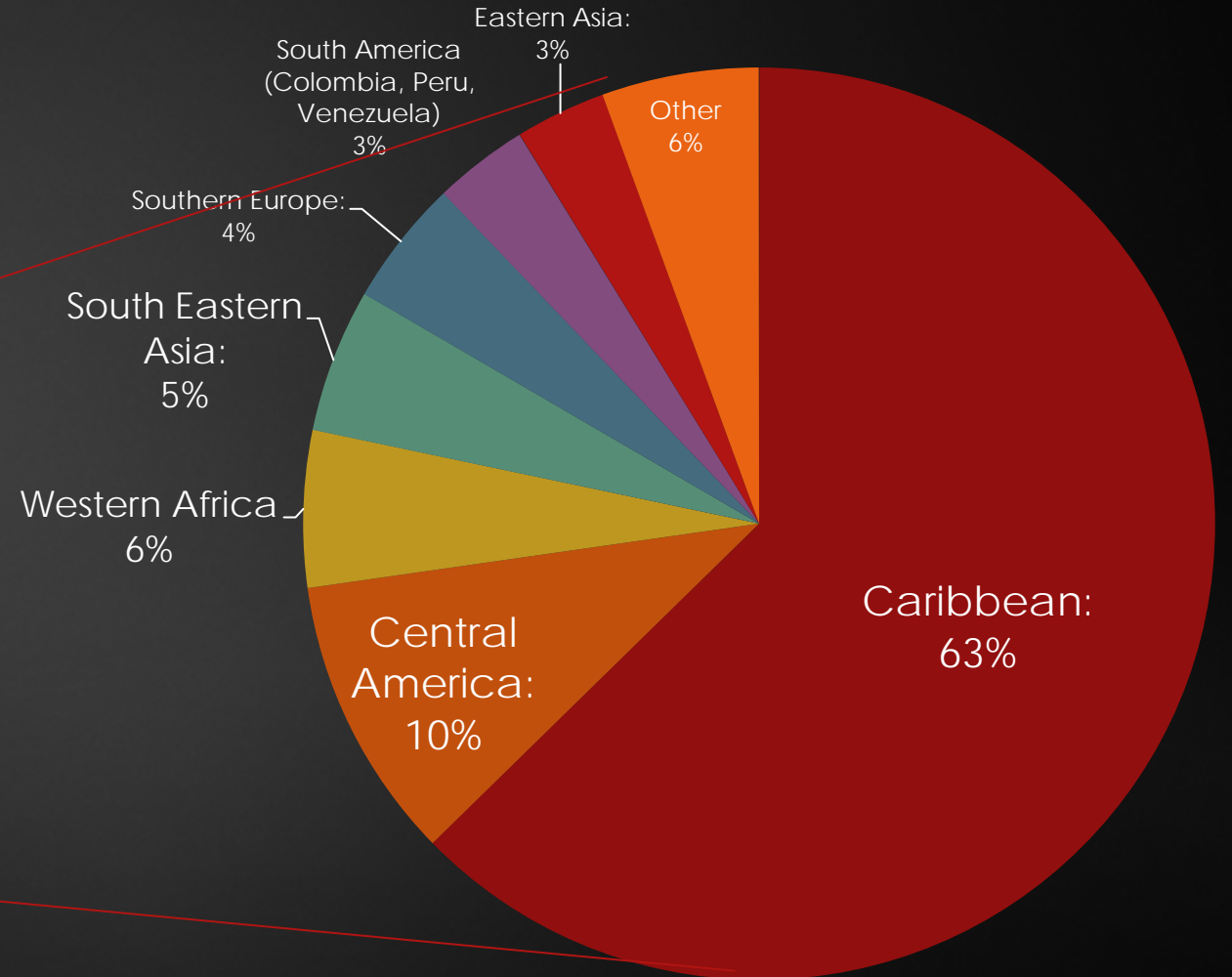
Broad Street: Diversity

40% of the population is foreign-born

60% of households are multilingual



Foreign-Born Population (Broad Street)



Place of Origin for Foreign-Born Population

Broad Street: **Income Statistics**



34% of people live in poverty (compared to 14% in metro Providence, and 16% nationwide)

Median household income is ~50% less than metro Providence average

Broad Street: **Transportation Statistics**



25% of households do not have a car

40% of working residents do not commute to work alone in a car

2X as many people carpool, take public transit, walk, and bike

Broad Street: **Transportation Statistics**

Broad Street experienced the **highest number of crashes** involving people walking or riding a bicycle out of any corridor in Providence (2009 – 2015).

82

crashes involved a person walking or riding a bicycle (2009 -2015)

11

crashes resulted in a fatal or serious injury to someone walking or riding a bike (2009-2015)

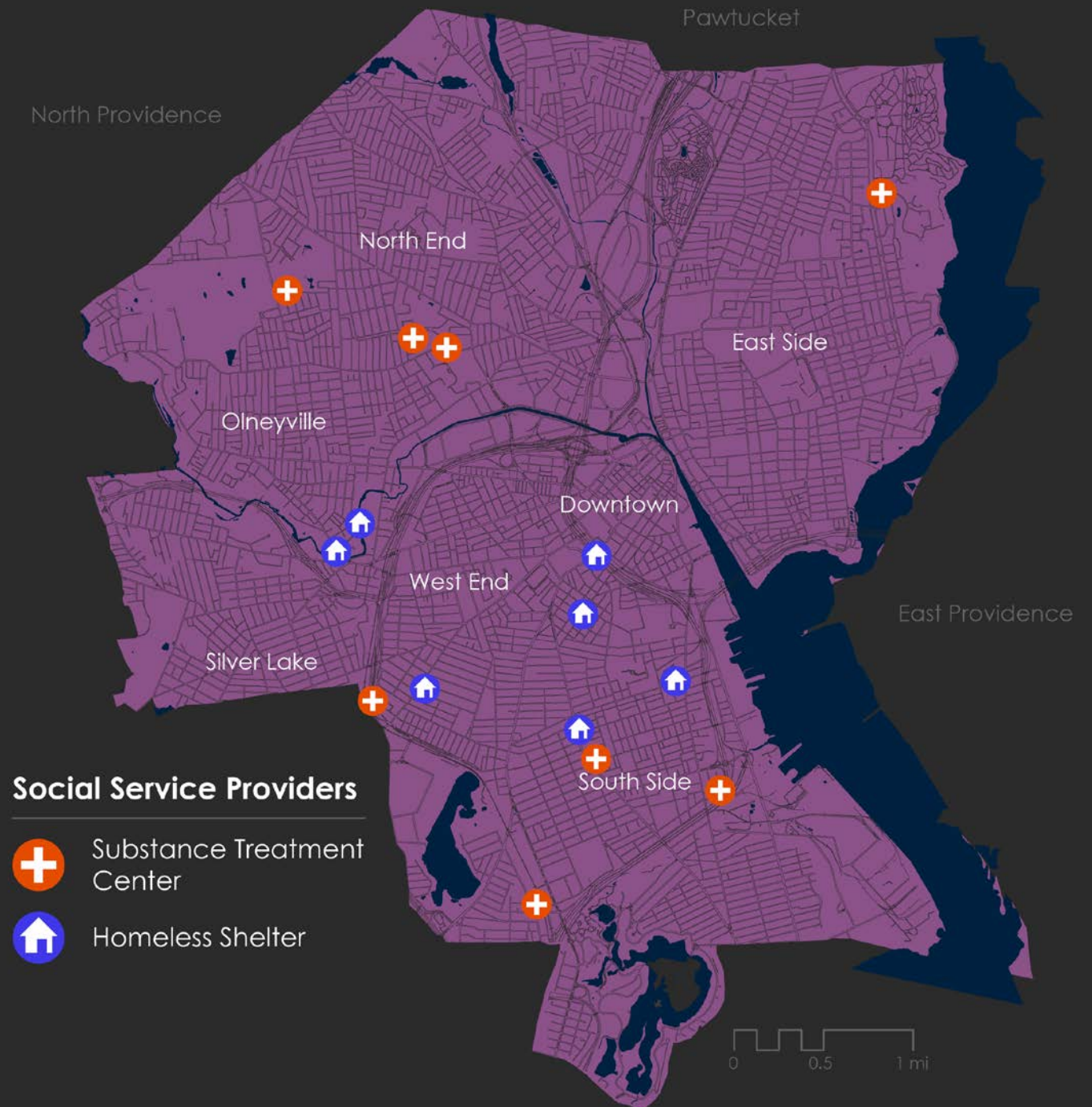
Schools

**>5,000 elementary,
middle school, and
high school students**
at schools along Broad Street
between Downtown and
Roger Williams Park



Services

- The Southside has the highest concentration of homeless services locations in Providence.
- Of the 7 shelters for individuals in Rhode Island, 4 are located in the South Providence.



Source:
Elmwood/Southside Crimewatch, Elmwood Neighborhood Assoc., South Providence Neighborhood Assoc.

Agenda

- ▶ **Welcome**
- ▶ **Presentation**
 - ▶ Southside metrics and indicators
 - ▶ [Planning and development: How it works](#)
 - ▶ Past plans and their accomplishments, upcoming investments
- ▶ **Small Group Discussions**
 - ▶ Your vision for Broad Street
 - ▶ Your ideas for redeveloping the Saint Joseph's campus
 - ▶ Other ideas and concerns related to Broad Street
- ▶ **Report-Back**
- ▶ **Next Steps**

How Planning Works

Comprehensive Plan – establishes citywide plans and policies (2014)



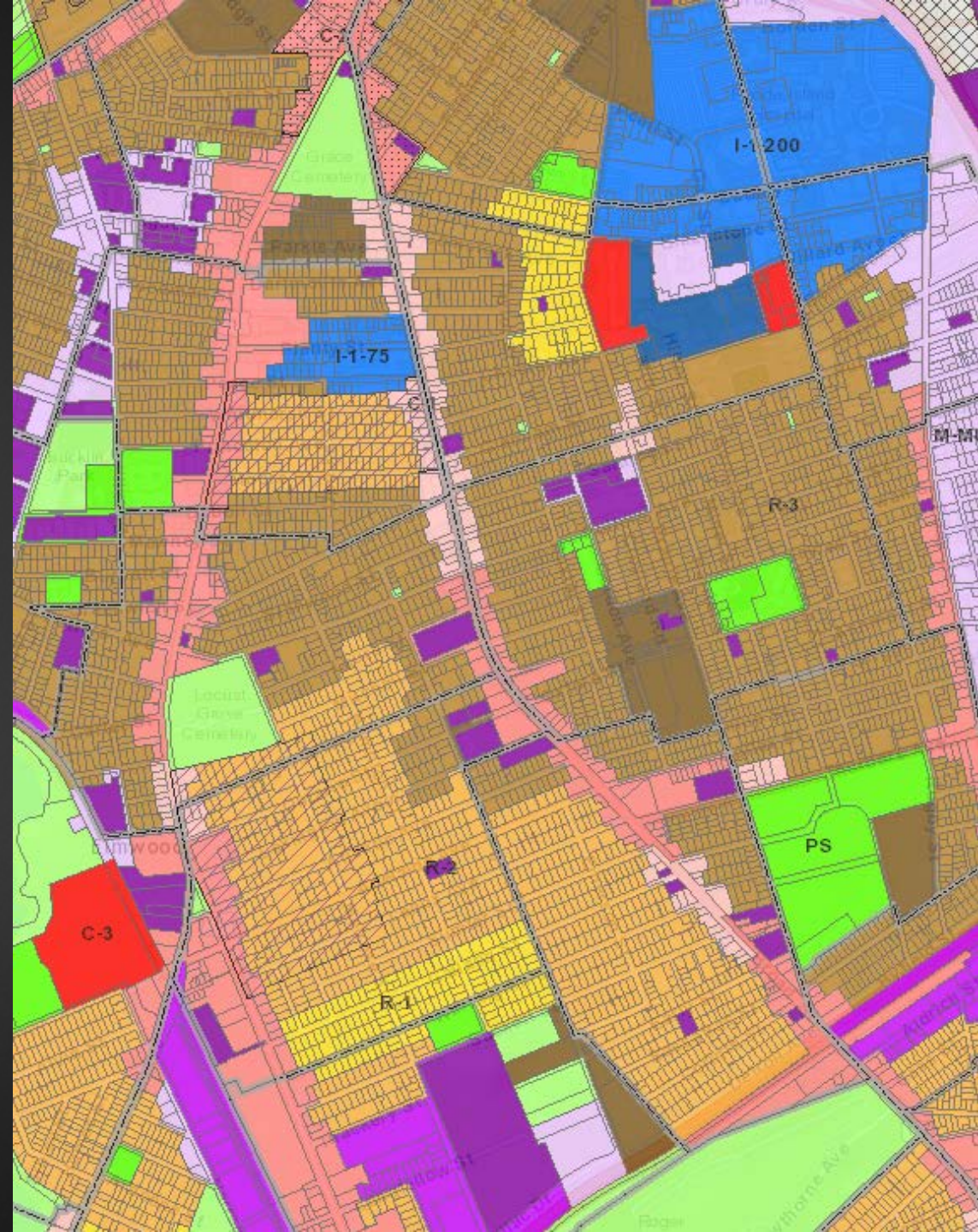
Neighborhood Plans, Special Area Plans, Other Planning Studies



Zoning Ordinance and Zoning Map – tools of implementation

What is Zoning?

- ▶ Shapes the physical environment you experience every day
- ▶ Controls density, height, placement of buildings
- ▶ Protects against incompatible uses
- ▶ Establishes clear standards for the development process
- ▶ Determines what building uses are allowed where
 - ▶ Residential, Commercial/Mixed-Use, Institutional, Industrial, Parks/Open Space



Development Review Process

- ▶ Volunteer boards – city residents
 - ▶ City Plan Commission (large redevelopment projects)
 - ▶ Zoning Board of Review (variances)
 - ▶ Historic District Commission Review
 - ▶ Downtown Design Review Committee
- ▶ Public notice requirements and public input and comment periods at various points during development

How to Engage

- ▶ Attend and comment at City Plan Commission meetings
 - ▶ <http://sos.ri.gov/openmeetings/>
 - ▶ Type "Providence City Plan Commission" into search bar
 - ▶ Click orange "eMail" button next to "Upcoming Meetings" to receive meeting agendas
- ▶ Participate in planning meetings (like this one)
- ▶ Get to know your planner liaison, Allen Penniman
 - ▶ apenniman@providenceri.gov
 - ▶ 401-680-8523

Browse Filing Entities by Name
a b c d e f g h i j k l m n o p q r s t u v w x y z

Search Bar
Enter search term ...

Submit

Providence City Plan Commission

Info About This Entity

Contact Information

Contact Person: Christopher Ise

Phone: 401-680-51-4300 x521

Email: cise@providenceri.com

Parent Entities

Providence City of

RSS REX eMail Today's Meetings for Providence City Plan Commission

RSS REX eMail Upcoming Meetings for Providence City Plan Commission

RSS REX eMail Past Meetings for Providence City Plan Commission

- February 28, 2017 at 4:45 PM
- January 17, 2017 at 4:45 PM

How to Engage

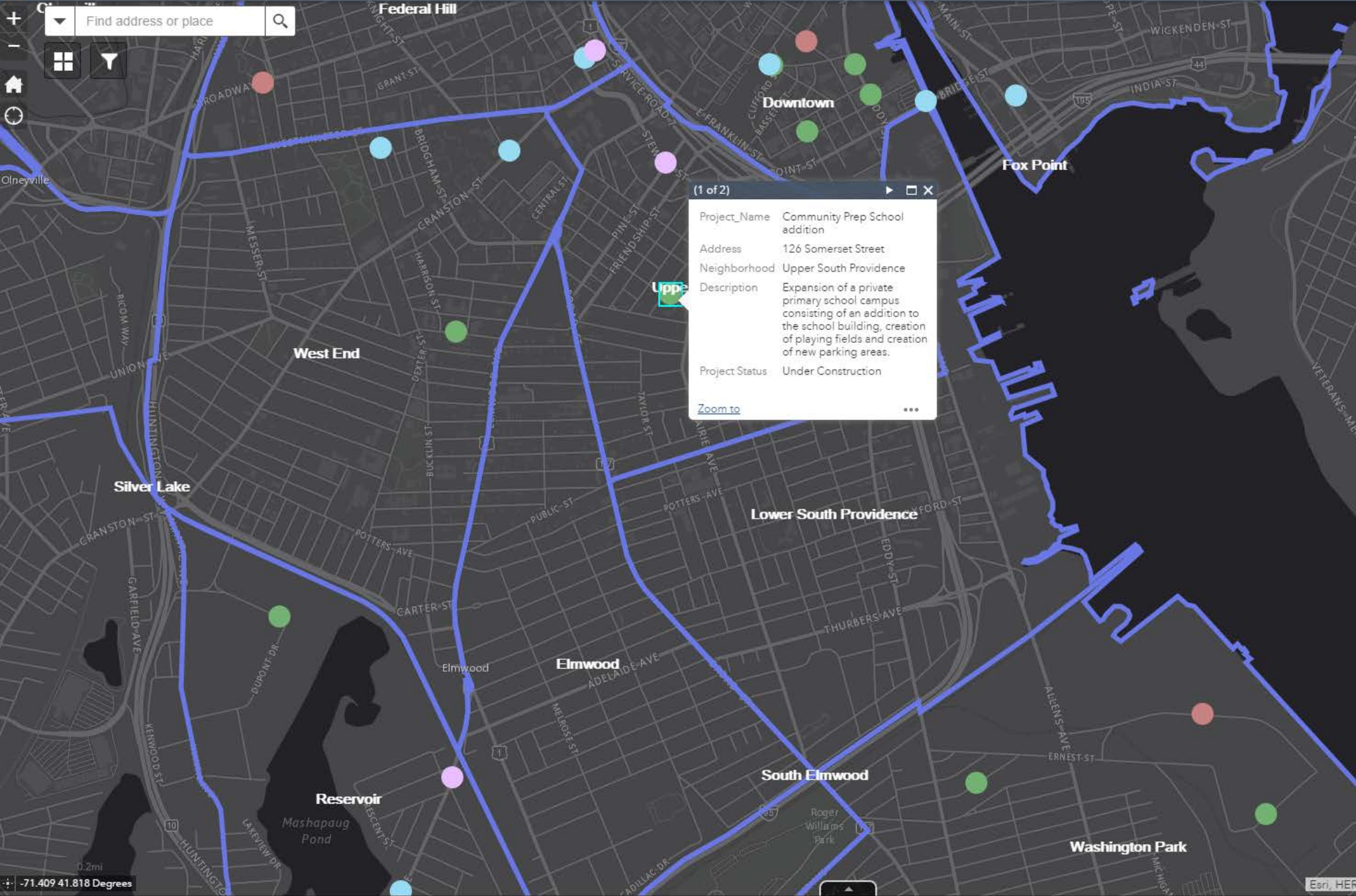
- ▶ Check the Development Viewer:
www.providenceri.com/planning



The screenshot shows the ProvidenceRI.com website with a navigation bar at the top containing 'Resident', 'Visitor', 'Business', 'Student', and a home icon. The main header reads 'PLANNING + DEVELOPMENT'. Below this is a search bar and the text 'CITY OF PROVIDENCE, RHODE ISLAND'. The main content area features four sections: '2015 Consolidated Annual Performance Evaluation Report (CAPER)', 'Providence Development Viewer', '6-10 Connector Project', and 'NEW Providence Online Mapping Dashboard'. A right-hand sidebar contains a 'Planning + Development' menu with links to 'About Us', 'Boards + Commissions', 'Public Meeting Information', 'Business + Jobs', 'Community Development', 'Fair Housing', 'Housing Opportunities', 'Planning', 'GIS + Maps', and 'Staff Directory'. At the bottom of the sidebar are three call-to-action buttons: 'OPEN PVD', 'JOBS NOW!', and 'Apply for a Board'. The 'Providence Development Viewer' section includes an icon of blue building blocks and a description of an interactive mapping application.

Find address or place

Home, Fullscreen, Layers icons



(1 of 2)

Project_Name	Community Prep School addition
Address	126 Somerset Street
Neighborhood	Upper South Providence
Description	Expansion of a private primary school campus consisting of an addition to the school building, creation of playing fields and creation of new parking areas.
Project Status	Under Construction

[Zoom to](#) ...

Legend

Providence Development Projects

- Commission/Board Review Approved
- Pre-Application
- Under Commission/Board Review
- Under Construction

PVD_Boundaries - Neighborhoods

Agenda

- ▶ **Welcome**
- ▶ **Presentation**
 - ▶ Southside context and demographics
 - ▶ Planning and development: How it works
 - ▶ [Past plans and their accomplishments](#)
- ▶ **Small Group Discussions**
 - ▶ Your vision for Broad Street
 - ▶ Your ideas for redeveloping the Saint Joseph's campus
- ▶ **Report-Back**
- ▶ **Next Steps**

Providence Tomorrow Neighborhood Plan (2009)

- ▶ Based on community input from neighborhood charrettes
- ▶ **Result:**
 - ▶ Influenced new comprehensive plan and zoning ordinance



PROVIDENCE TOMORROW
our city ■ our neighborhoods ■ our future

UPPER SOUTH PROVIDENCE, LOWER SOUTH
PROVIDENCE, AND ELMWOOD
NEIGHBORHOOD PLAN

David N. Cicilline, Mayor

Department of Planning and Development
Thomas E. Deller, AICP, Director

November 2009

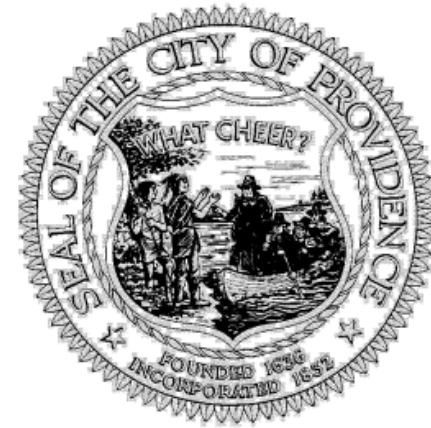


Zoning Ordinance

Adopted November 2014

- ▶ Revised to encourage walkable, urban development that responds to neighborhood character
- ▶ Simplified development review process
- ▶ Access the Zoning Ordinance and Map at:
 - ▶ Map:
<https://gis.providenceri.com/city-map/>
 - ▶ Ordinance:
<https://www.providenceri.com/efile/5782>

CITY OF PROVIDENCE ZONING ORDINANCE



CHAPTER 2014-39 NO. 513
ADOPTED NOVEMBER 24, 2014
EFFECTIVE DECEMBER 24, 2014

CONTAINS AMENDMENTS UP TO AND INCLUDING ORDINANCE 2016-18, APPROVED MAY 2, 2016

CDBG and HOME

- ▶ DPD has invested **\$44.2 million** of HUD funds in the Southside since 2000:
 - ▶ Affordable housing
 - ▶ Community centers
 - ▶ Schools
 - ▶ Playgrounds
 - ▶ Local business renovations
 - ▶ Social service providers
 - ▶ Tree planting
 - ▶ Sidewalk repair



Meeting Street School

Source:

City of Providence Department of Planning and Development, HUD Integrated Disbursement and Information System

HUD Community Challenge Grant

Planning Study- 2010

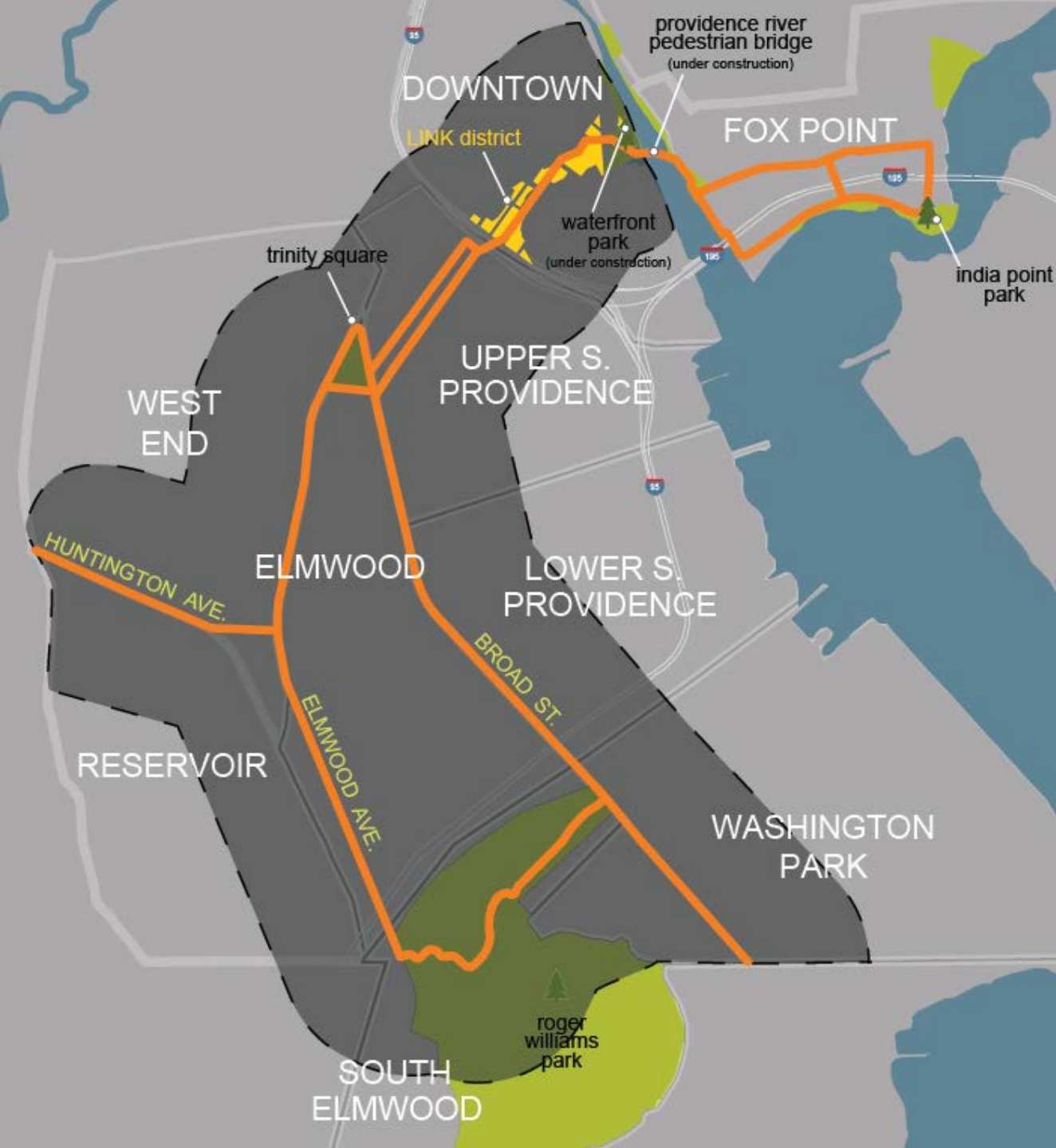
- ▶ Conducted transit, land use, and arts and cultural planning studies along Broad Street and four other high-use bus corridors
- ▶ **Result:**
 - ▶ More than \$3.5M invested to create R-Line
 - ▶ Community-based art at bus shelters



Grace Church Cemetery Fence

- ▶ Providence Redevelopment Agency invested **\$170,000** in fencing





City Walk Study 2014

- ▶ Connect neighborhoods
 - ▶ Make it easier and safer to walk and bike to:
 - ▶ Jobs and opportunities in Downtown, schools, Roger Williams Park, India Point Park, merchants and destinations along Broad and Elmwood
- Upcoming Initiative**
- ▶ **Result:**
 - ▶ Announcement coming soon!

Broad Street Road Safety Assessment

2016

- ▶ Identified safety issues for people walking and riding bikes
- ▶ Broad St has highest number of pedestrian and bike crashes citywide
- ▶ **Result:** *Upcoming Initiative*
 - ▶ Announcement coming soon!



Upcoming Initiative

The Big Jump

2017-2020

- ▶ 1 of 10 U.S. cities selected by People for Bikes
- ▶ Focus on South Providence and Jewelry District
- ▶ Will work with City and neighborhood leaders in South Providence and Jewelry District to make riding bicycles safer
- ▶ Goal: double or triple number of people riding bicycles in South Providence over 3 years



Arts and Cultural Investments

- ▶ Illuminating Trinity (**\$1.3 million**)
 - ▶ Southlight design/build project
 - ▶ Community Innovation Lab
- ▶ Sowing Place (**\$75,000**)
 - ▶ Indoor farmer's market and greenhouse
 - ▶ Economic development for local growers
- ▶ Broad Street Cultural Tourism (**\$4,500**)
 - ▶ Highlight monthly events on Broad
 - ▶ Create and promote marketing materials





Agenda

- ▶ Welcome
- ▶ Presentation
- ▶ Small Group Discussions
 - ▶ Your vision for Broad Street
 - ▶ Your ideas for redeveloping the Saint Joseph's campus
 - ▶ Other ideas and concerns related to Broad Street
- ▶ Report-Back
- ▶ Next Steps

Ground rules:

Be respectful.

Be positive.

Stay on topic.

Everyone gets a turn to speak.

All ideas and opinions are valuable.

Agenda

- ▶ Welcome
- ▶ Presentation
- ▶ **Small Group Discussions**
 - ▶ Your vision for Broad Street
 - ▶ Your ideas for redeveloping the Saint Joseph's campus
 - ▶ Other ideas and concerns related to Broad Street
- ▶ **Report-Back**
- ▶ Next Steps

Agenda

- ▶ **Welcome**
- ▶ **Presentation**
- ▶ **Small Group Discussions**
 - ▶ Your vision for Broad Street
 - ▶ Your ideas for redeveloping the Saint Joseph's campus
 - ▶ Other ideas and concerns related to Broad Street
- ▶ **Report-Back**
- ▶ **Next Steps**

Next Steps

- ▶ Summarize meeting notes and key themes/issues in a report
- ▶ Future meetings to move forward with key issues

Stay Connected

- ▶ Facebook and Twitter: **@ProvPlanning**
- ▶ Web: **providenceri.com/planning**
 - ▶ Download this presentation
 - ▶ Access the online survey
- ▶ Your planner liaison:
 - ▶ **Allen Penniman**, apenniman@providenceri.gov, 401-680-8523
- ▶ Sign up for working group meetings
- ▶ Invite us to your meetings!

A Community Conversation about the future of Broad Street

MARCH 11, 2017

CITY OF PROVIDENCE
DEPARTMENT OF PLANNING AND DEVELOPMENT
MAYOR JORGE O. ELORZA
BONNIE NICKERSON, AICP, DIRECTOR

