



Providence Bicycle and Pedestrian Advisory Commission

Jorge O. Elorza, Mayor

Staff Report: Kennedy Plaza Design Review – Downtown – Ward 1 (For Action)

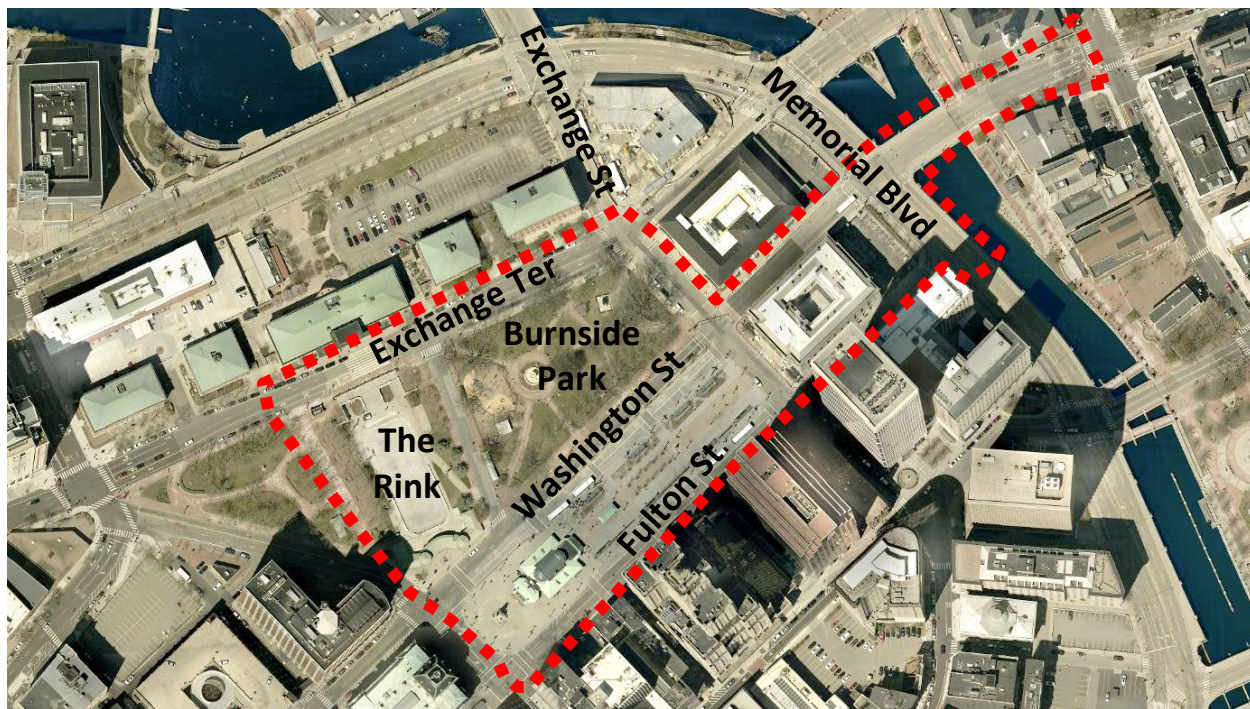
Presented at November 15, 2018 BPAC meeting

Project Background

The City of Providence Department of Planning and Development seeks comments from the BPAC regarding the conceptual plans for improvements within and surrounding Greater Kennedy Plaza.

Using \$2.7 million from the State Transportation Improvement Program, the City plans to implement a portion of the vision for Kennedy Plaza released in August 2017. This vision builds on the 2014 reconfiguration of the plaza and complements the bus service enhancements planned as part of the Downtown Transit Connector.

Project Map





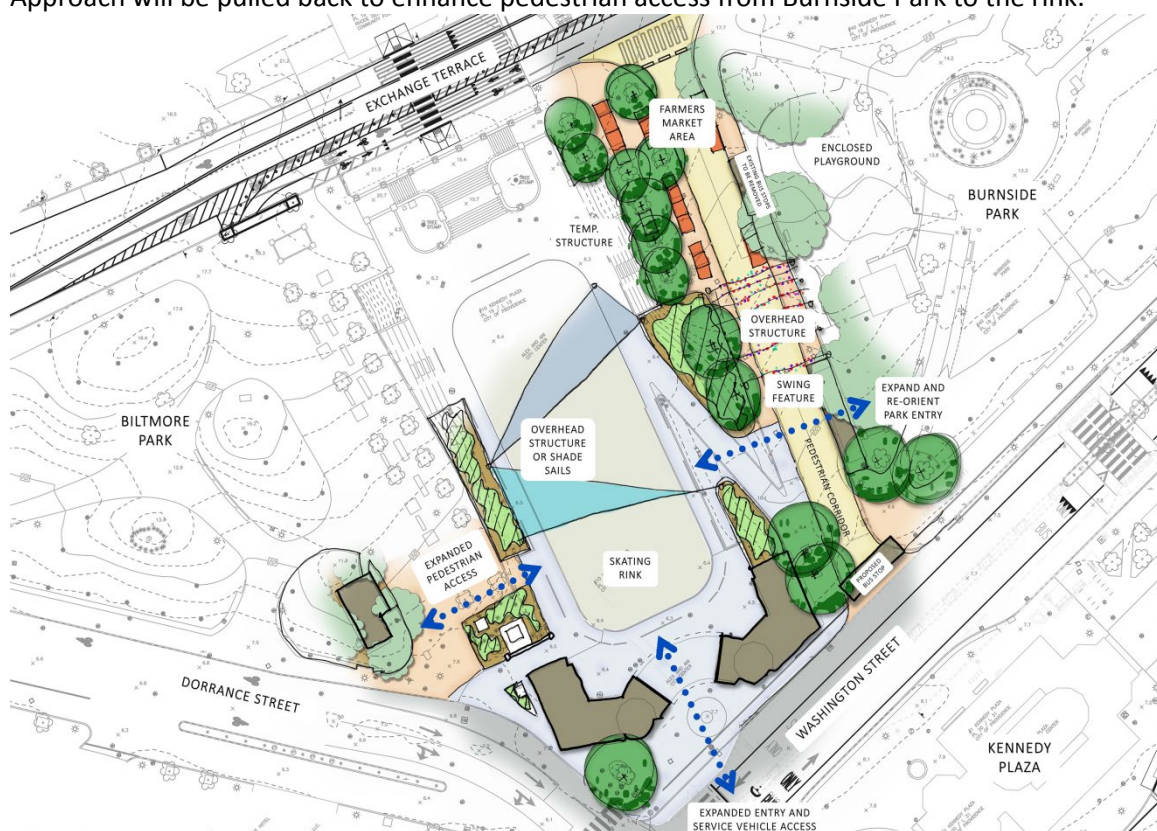
Providence Bicycle and Pedestrian Advisory Commission

Jorge O. Elorza, Mayor

Changes since BPAC Conceptual Review

Some of the updates since the BPAC's conceptual review include:

- Enhanced connections and access between Burnside Park, the skating rink, and Biltmore Park. Three bays from the entrance to the rink will be demolished to create an expanded entrance to the rink, creating better sightlines and encouraging more activity. Existing fencing on the west side of East Approach will be removed, and landscaped areas on the southern end of East Approach will be pulled back to enhance pedestrian access from Burnside Park to the rink.



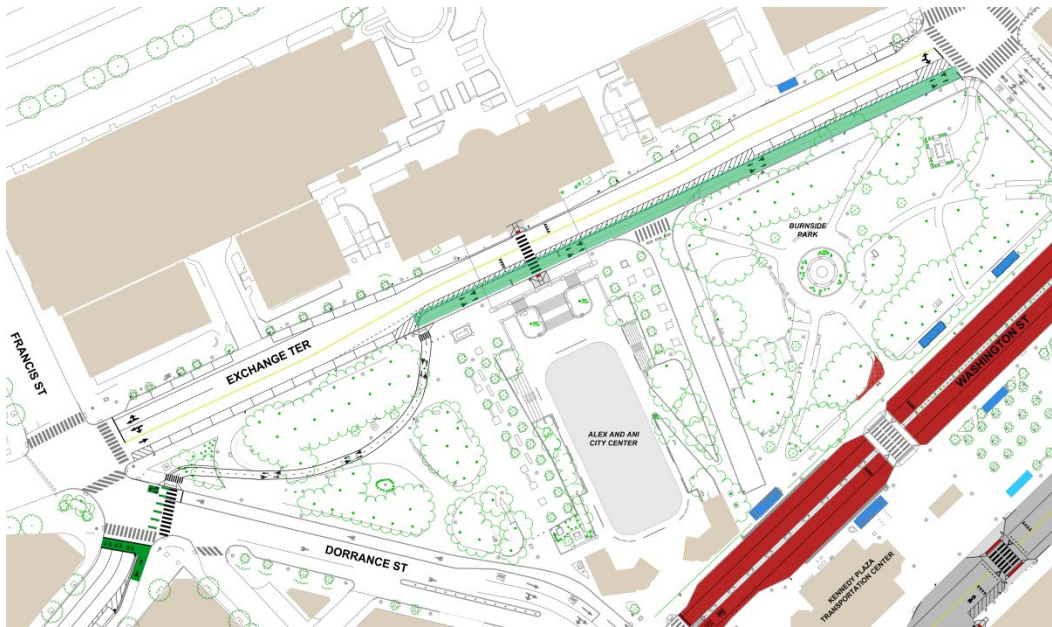
- Improved bicycle circulation, with installation of two-way cycle track on Exchange Terrace from Exchange to Biltmore Park. This cycle track will connect to the Fountain St. bike lane extension through Biltmore Park.

P

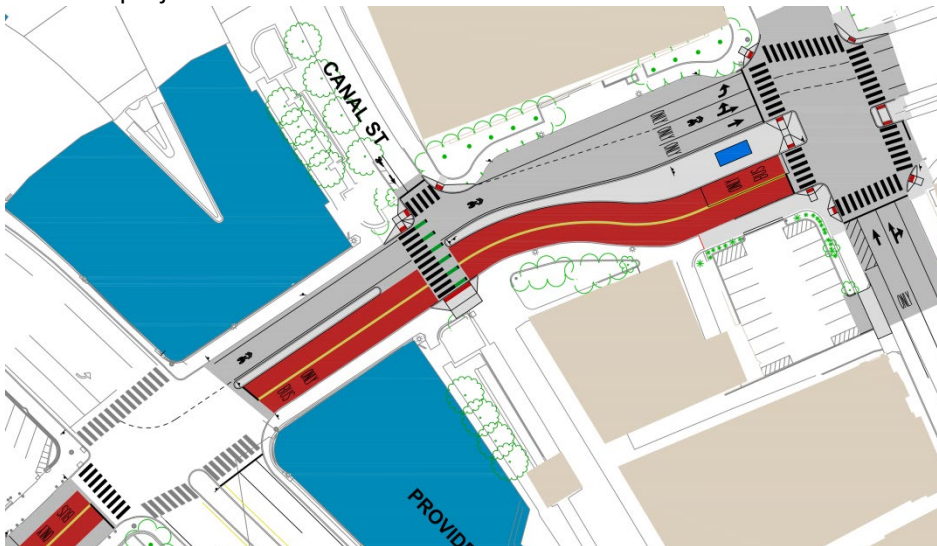
Providence Bicycle and Pedestrian Advisory Commission

Jorge O. Elorza, Mayor

- Modifications to Exchange Terrace include the removal of all existing RIPTA stops except the X stop on the northern side, and a reduction from two to one travel lane in the westbound direction. These modifications provide room for additional parking as well as the cycle track.



- An enhanced crosswalk will be added at Canal St. and Washington St. that connects to RIDOT's bike lane project on Canal St.



Respectfully submitted by Alex Ellis.