



Providence Bicycle and Pedestrian Advisory Commission

Jorge O. Elorza, Mayor

Staff Report: Public Hearing for Grant Application to DEM Recreational Trails Program for Gotham Greens/Atwells Fire Station path – Olneyville – Ward 15 *(For Action)*
Presented at October 16, 2019 BPAC meeting)

Project Background

The proposed grant submission will be presented and discussed with an opportunity for public input. Additionally, the City of Providence Department of Planning and Development seeks comments from the BPAC regarding 30% plans for both the off-road Gotham Greens path and the off-road connection of the path to Atwells Ave through the Atwells Ave Fire Station parcel. This will be a design level review of the combined project and will be the second of two reviews before the Commission.

At the April 2018 meeting of the Commission, a number of recommendations were made related to this project. Some of these recommendations have been included in the design plans currently under review:

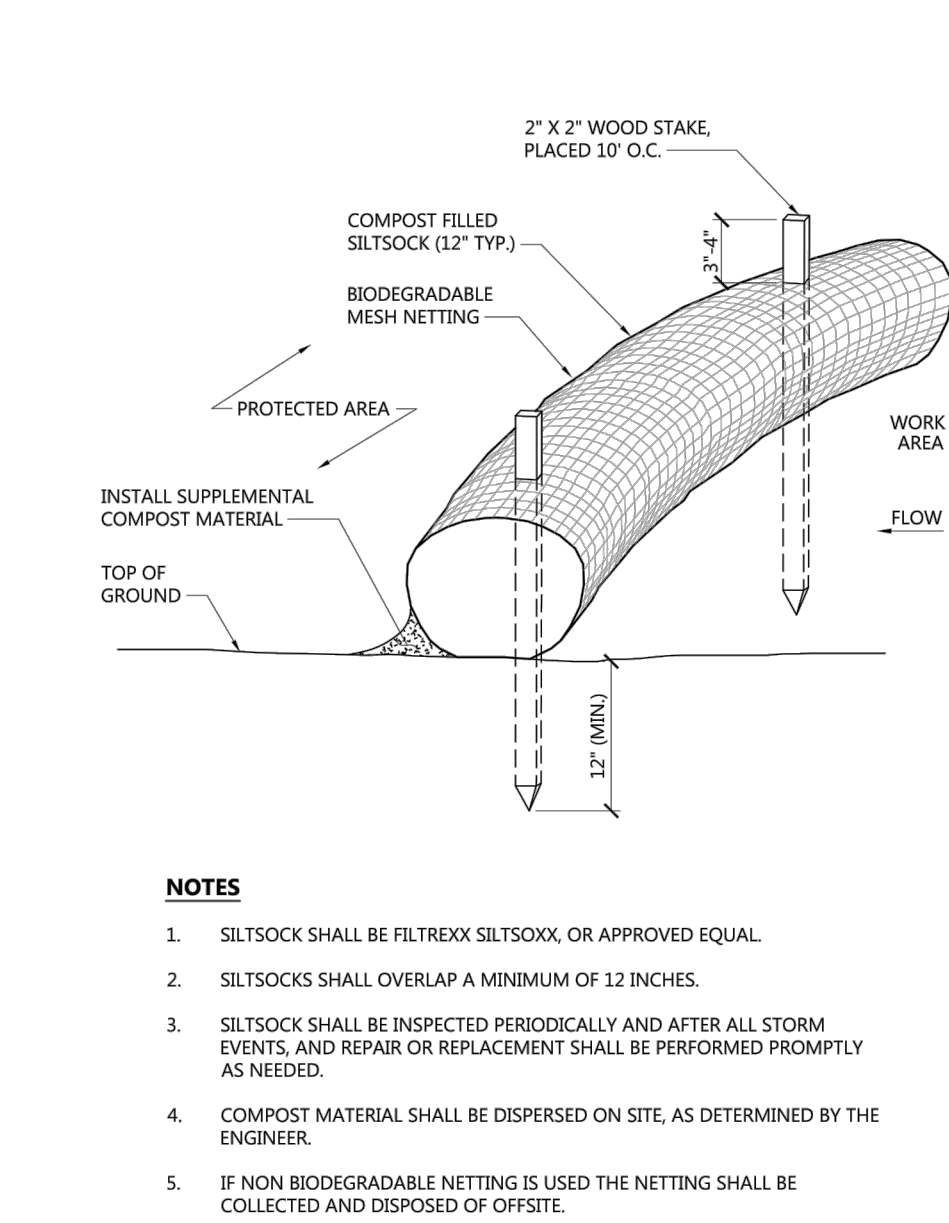
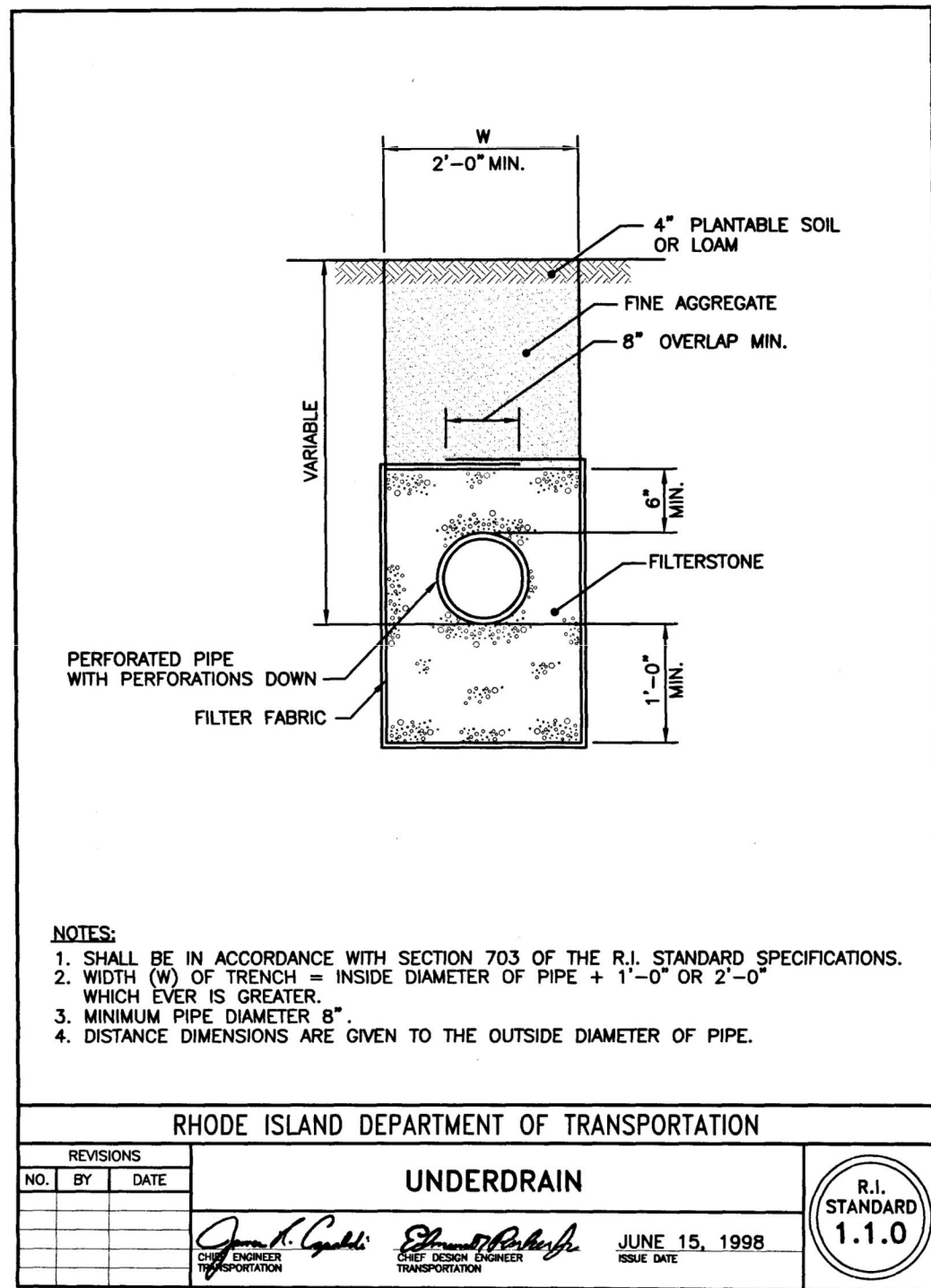
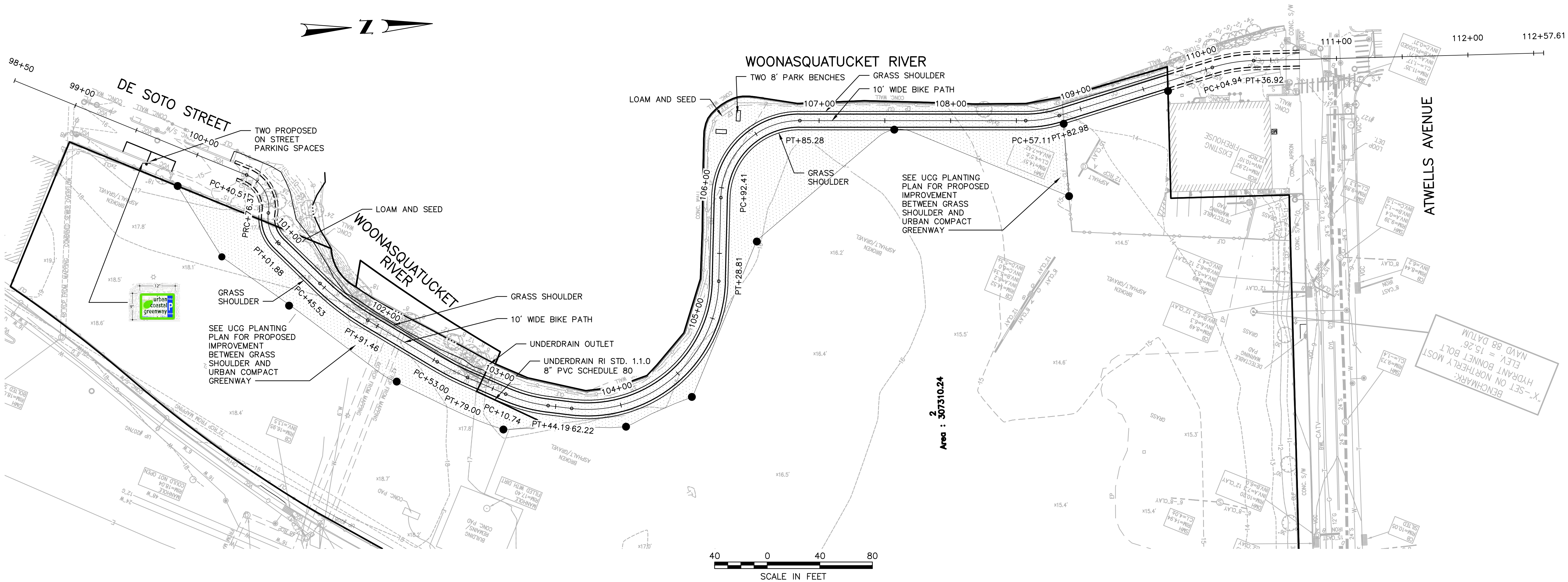
- The City should work with the State on the 6-10 Connector project to enhance the connections between Harris Ave and De Soto St. **THIS CONNECTION IS INCLUDED IN THE DRAFT GREAT STREETS PLAN.**
- The City should pay special attention to the street crossing where the new path intersects with Atwells Ave. **THIS CONNECTION IS INCLUDED IN THE DRAFT GREAT STREETS PLAN.**
- The City should endeavor to plan wayfinding for this project. **INCLUDED.**
- The City should continue to encourage reduction of the parking requirement requested by CRMC. **CRMC AGREED TO A REDUCED PARKING REQUIREMENT.**

Project Map (see right)

Respectfully submitted by Alex Ellis.



Page 1 of 1



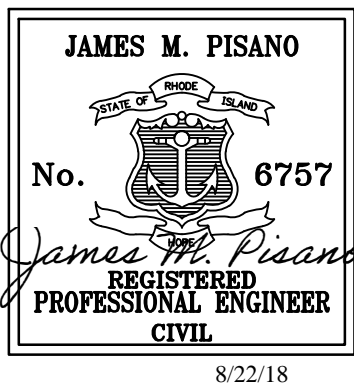
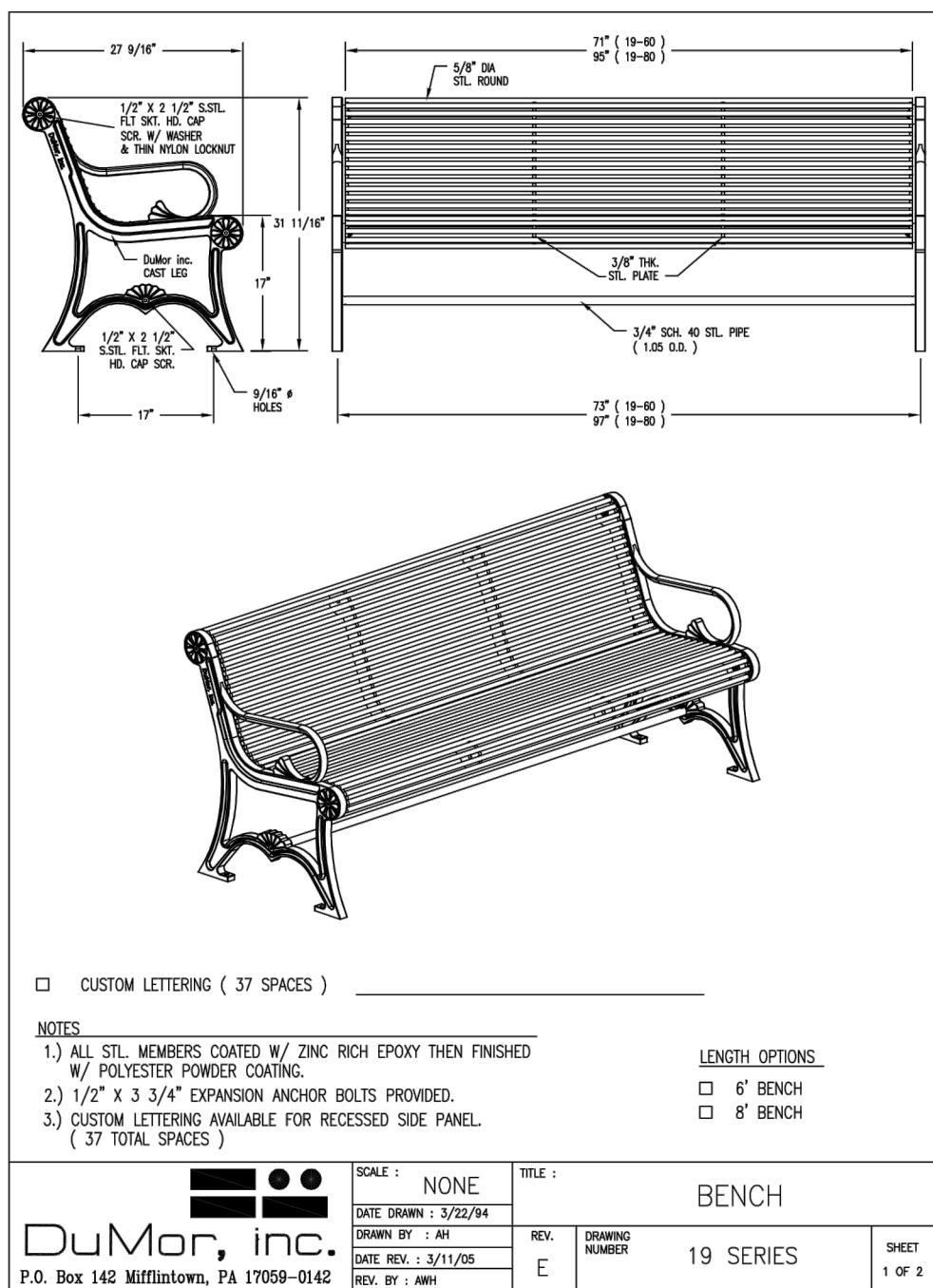
Siltsock - Erosion Control Barrier

N.T.S.

Source: VHB

REV

LD 658



ISSUED FOR PERMIT ONLY

REVISIONS			CITY OF PROVIDENCE	
NO.	DATE	BY	GE BASEWORKS SITE BICYCLE PATH	
			PROVIDENCE, RHODE ISLAND	
			GENERAL PLAN	
			CHECKED BY	DATE SCALE



1 Cedar Street
Suite 400
Providence, RI 02903
401.272.8100