



SOUTH PROVIDENCE NEIGHBORHOOD ASSOCIATION

January 24, 2019

MEETING AGENDA

1. Final plans for Clifford, Pine, Friendship
2. Broad Street Concept
3. Ground Mural Implementation
4. City Walk Stencil and Wayfinding
5. Gateway Signage



CITY WALK

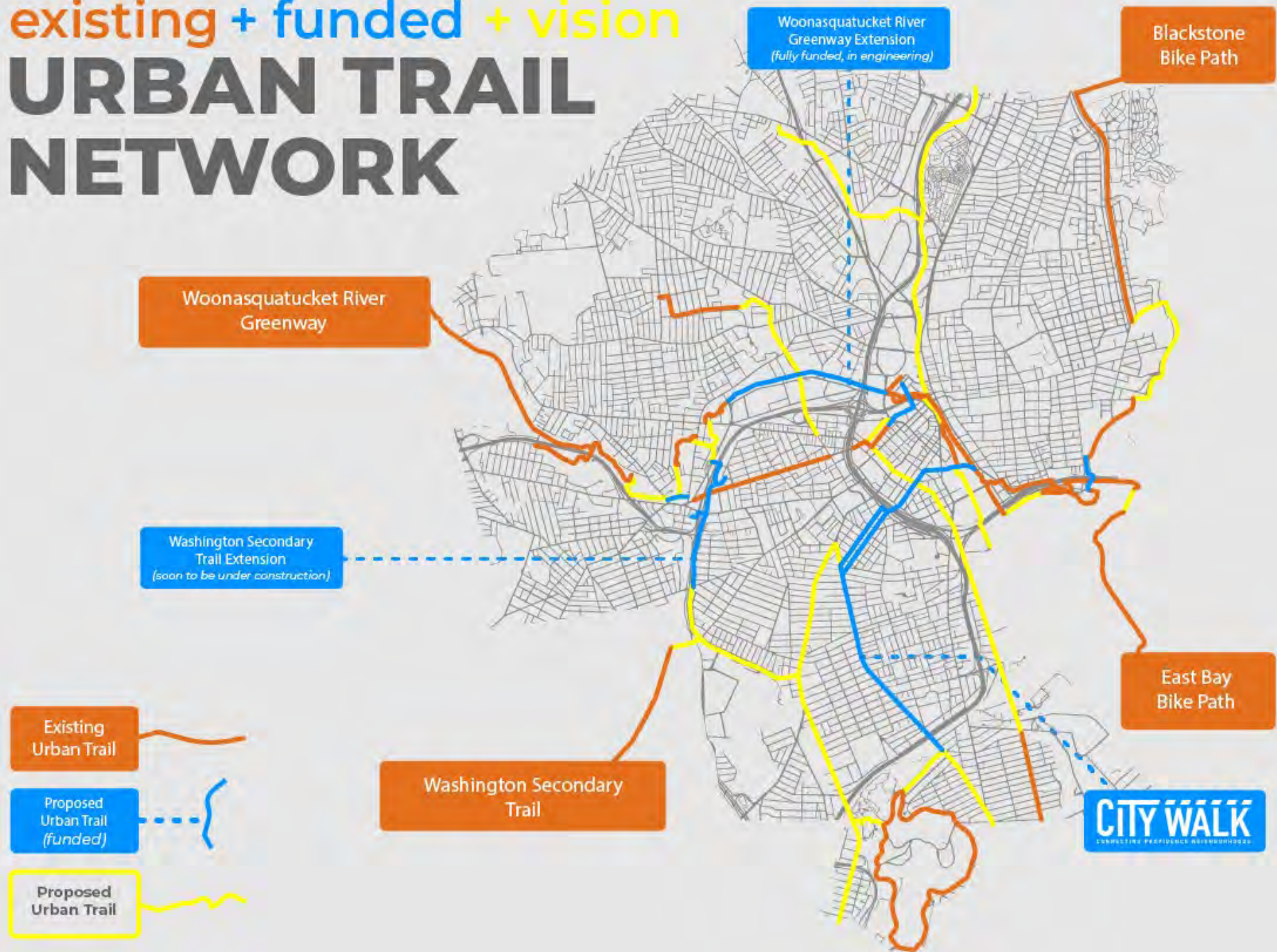
CONNECTING PROVIDENCE NEIGHBORHOODS

- First emerged as a concept of an “east-west greenway” through Downtown as part of Old Harbor community planning process (2006)
- Moved forward by community groups including Jewelry District Association, Providence Foundation, Elmwood Neighborhood Group
- City Walk Study conducted by those groups in 2014
- City secured ~\$2.35M in 2016 to implement safety improvements to complement larger vision
- Part of citywide Urban Trail Network Vision – connect every neighborhood to a safe network of places to **walk, run, bike, and scoot** along to get to **school, work, parks, and other destinations**



existing + funded + vision

URBAN TRAIL NETWORK



PHASE 1

- Clifford Street (Downtown)
- Clifford Street Bridge
- West Franklin Street
- Pine Street (Upper S. Prov.)
- Friendship Street (Upper S. Prov.)

Done

- Conceptual Design (10%) Submittal

Done

- Responses to comments and plan revisions

Now

- 90% Design Submittal

Up Next

- Plan, Specification, and Estimate Submittal
- Contractor Bidding
- Construction



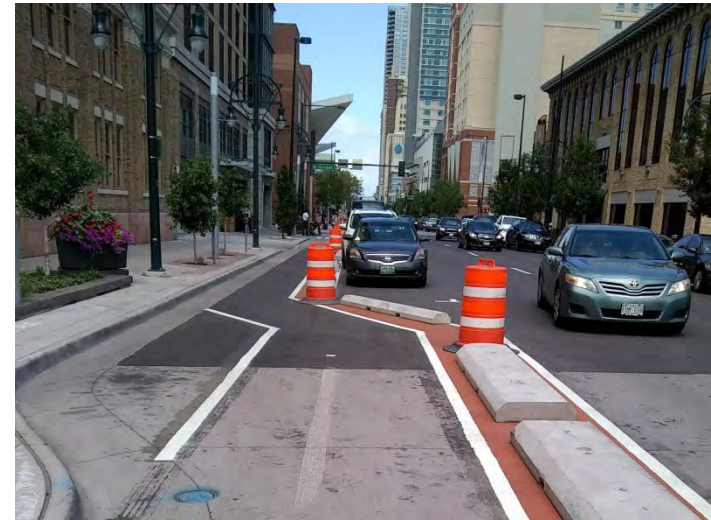
EXISTING (Clifford Street looking toward Jewelry District)



PROPOSED

PHASE 1 DETAILS

- Maintains on-street parking
- Vertical separation in trail buffer (between shared use path and on street parking): mix of planters and precast concrete curb
 - We have heard from community members that planters are important and are identifying maintenance options
 - Precast curb is relatively inexpensive to install and requires little to no maintenance
- Both are effective at protecting trail users



BROAD STREET CONCEPT PLAN PROCESS

1. Public Opinion and Engagement throughout 2018

- Walkabout/Bikeabout to identify issues on Broad Street with CAG and elected officials
- Public Meeting #1 to identify design preferences, challenges on Broad Street, and educate the community on potential options
- Public Meeting #2 to workshop design solutions
- Street Team has attended over 15 community events including recurring appearances at several markets

2. Tested Preferred Concept During Demonstration Project

- Summer 2018: Demonstration Project to test design option in real time and build community support
- Design > Test > Refine > Build





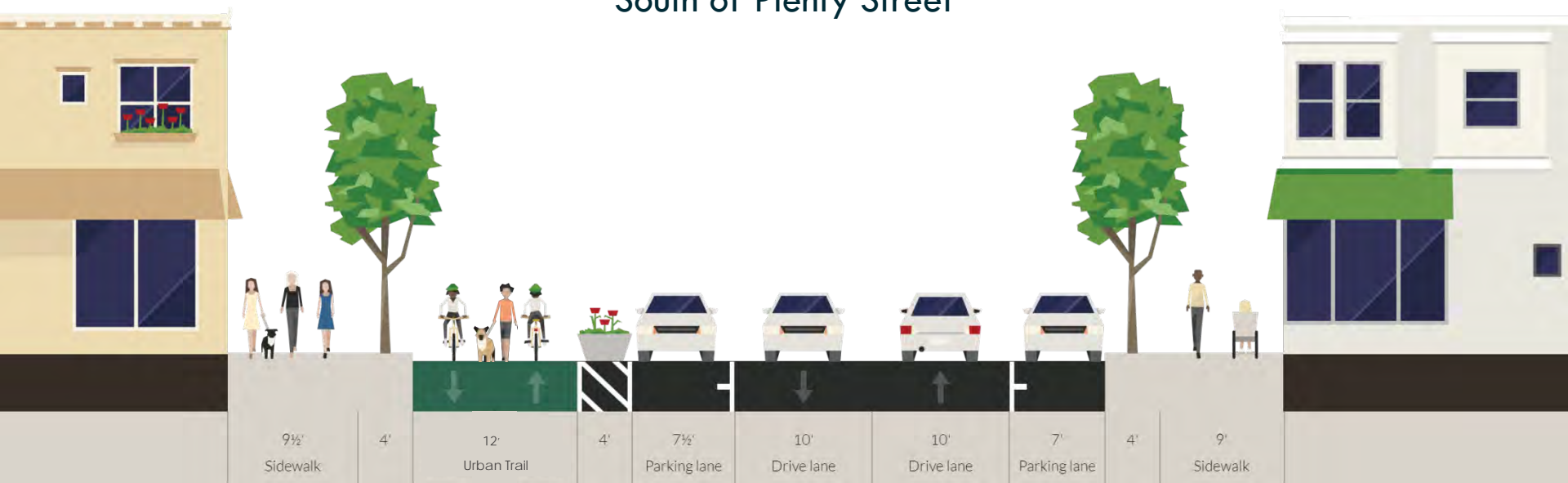
DEMONSTRATION DAY VIDEO

BROAD STREET CONCEPT

EXISTING



South of Plenty Street

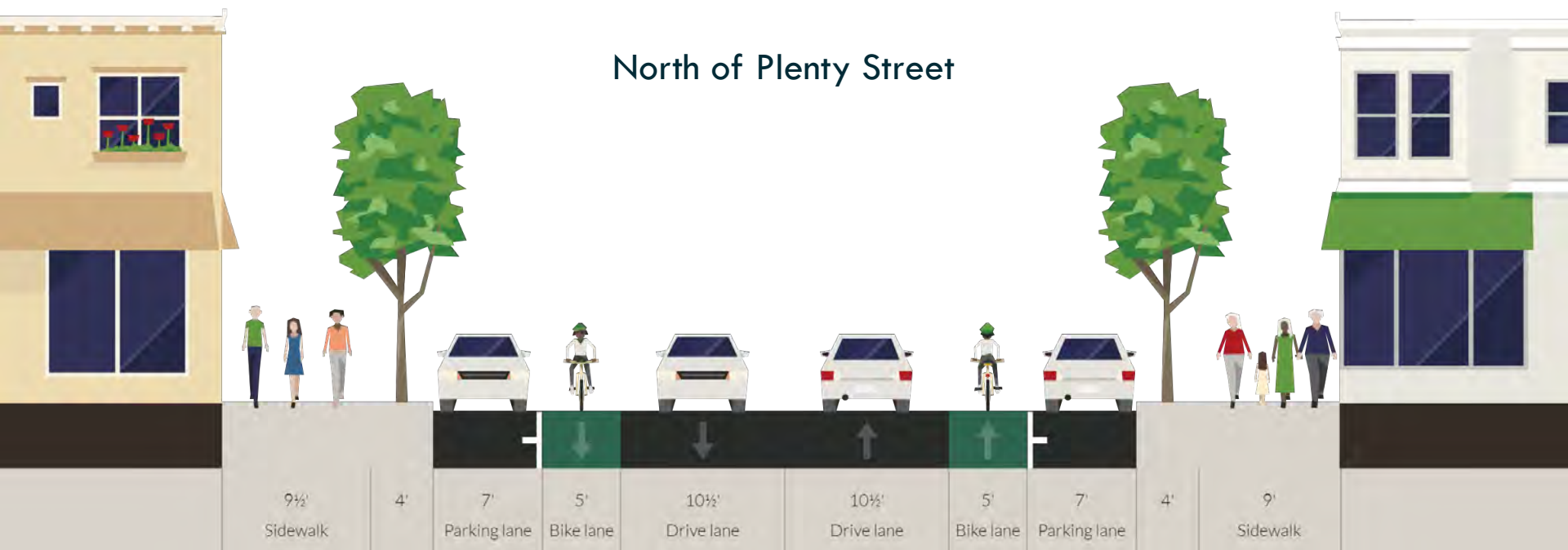


EXISTING

BROAD STREET CONCEPT

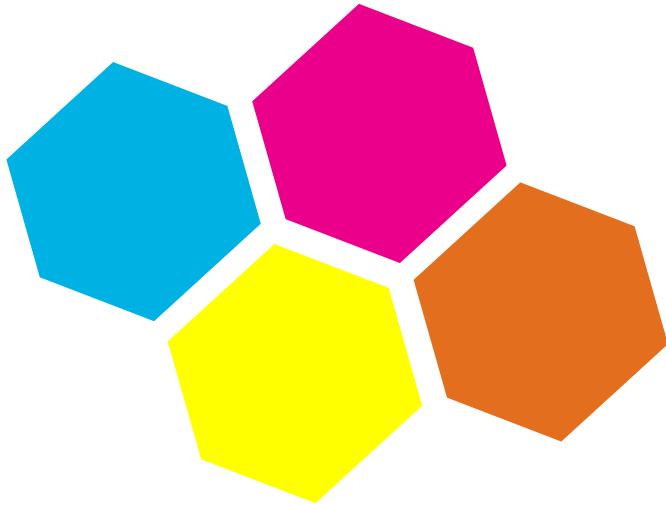


North of Plenty Street



GROUND MURAL IMPLEMENTATION

- Artist RFQ process through the Department of Art, Culture, and Tourism
- Defined color palette for artists



CITY WALK STENCIL AND WAYFINDING



CITY WALK STENCIL AND WAYFINDING



CITY WALK STENCIL AND WAYFINDING



CITY WALK WAYFINDING SIGNAGE

CITY WALK
CONNECTING PROVIDENCE NEIGHBORHOODS

- ↑ TRINITY SQUARE
🚶 5 min 🚲 2 min
- ➡ DOWNTOWN
🚶 24 min 🚲 8 min
- ➡ INDIA POINT PARK
🚶 45 min 🚲 14 min
- ↓ R. WILLIAMS PARK
🚶 30 min 🚲 9 min

CITY WALK
CONNECTING PROVIDENCE NEIGHBORHOODS

- ➡ TRINITY SQUARE
🚶 6 min 🚲 3 min
- ➡ DOWNTOWN
🚶 26 min 🚲 8 min
- ➡ INDIA POINT PARK
🚶 47 min 🚲 14 min
- ↓ R. WILLIAMS PARK
🚶 28 min 🚲 8 min

CITY WALK
CONNECTING PROVIDENCE NEIGHBORHOODS

- ↑ TRINITY SQUARE
🚶 22 min 🚲 7 min
- ↑ R. WILLIAMS PARK
🚶 46 min 🚲 14 min
- ➡ DOWNTOWN
🚶 5 min 🚲 3 min
- ↓ INDIA POINT PARK
🚶 22 min 🚲 7 min

CITY WALK GATEWAY SIGN



Visit the project website to sign up for our email list:
www.providenceri.gov/planning/citywalk

Have an existing meeting or event you would like us to attend?
Invite us!

Alex Ellis, aellis@providenceri.gov, 401-680-8400

Facebook/Twitter: @ProvPlanning

#citywalkpvd

