



# ELMWOOD NEIGHBORHOOD ASSOCIATION

February 24, 2019

# MEETING AGENDA

1. Final plans for Clifford, Pine, Friendship
2. Broad Street Concept
3. Ground Mural Implementation
4. City Walk Stencil and Wayfinding
5. Gateway Signage



# CITY WALK

CONNECTING PROVIDENCE NEIGHBORHOODS

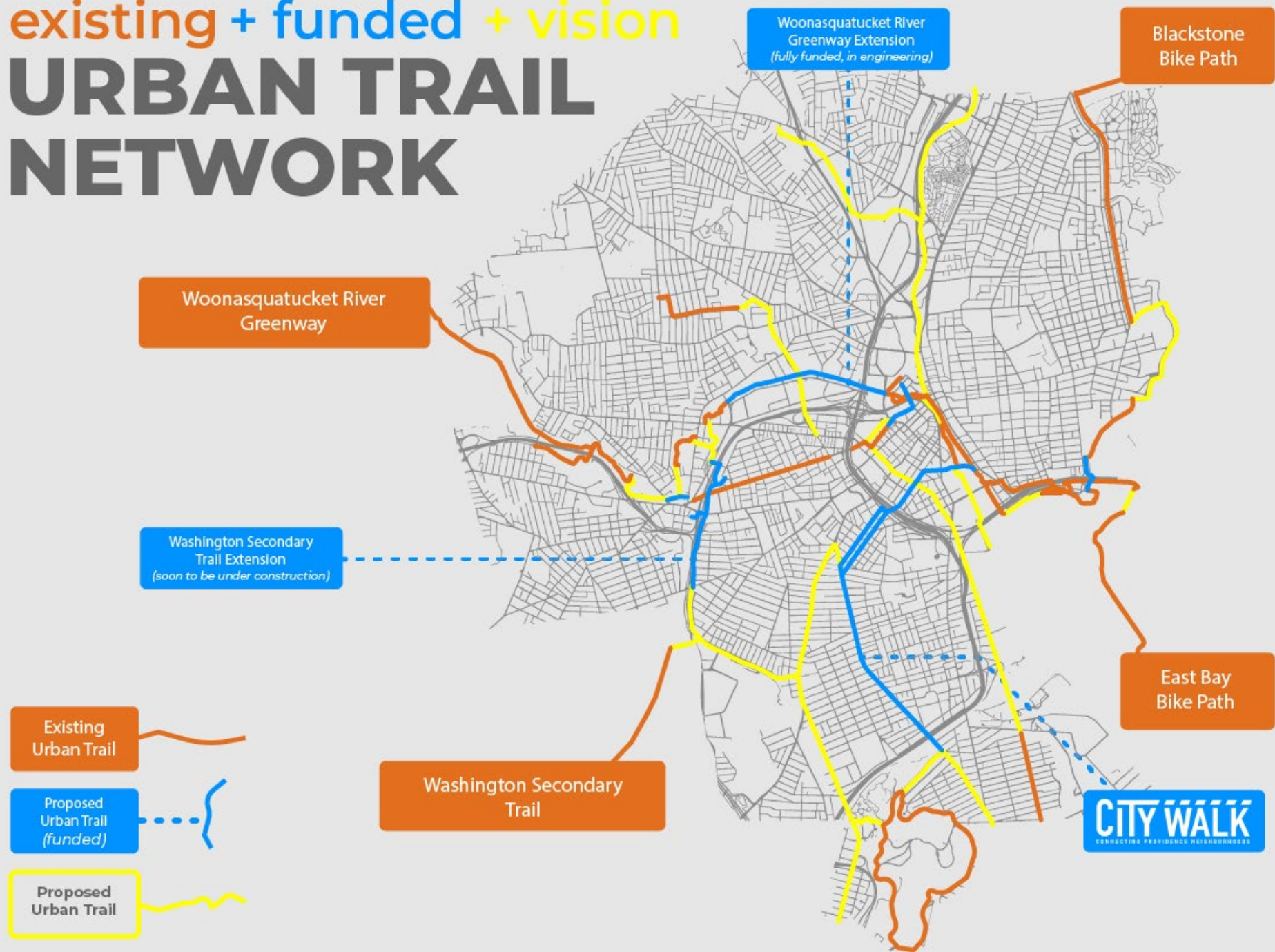
- First emerged as a concept of an “east-west greenway” through Downtown as part of Old Harbor community planning process (2006)
- Moved forward by community groups including Jewelry District Association, Providence Foundation, Elmwood Neighborhood Group
- City Walk Study conducted by those groups in 2014
- City secured ~\$2.35M in 2016 to implement safety improvements to complement larger vision
- Part of citywide Urban Trail Network Vision – connect every neighborhood to a safe network of places to **walk, run, bike, and scoot** along to get to **school, work, parks, and other destinations**





existing + funded + vision

# URBAN TRAIL NETWORK



# PHASE 1

- Clifford Street (Downtown)
- Clifford Street Bridge
- West Franklin Street
- Pine Street (Upper S. Prov.)
- Friendship Street (Upper S. Prov.)

Done

- Conceptual Design (10%) Submittal

Done

- Responses to comments and plan revisions

Now

- 90% Design Submittal

Up Next

- Plan, Specification, and Estimate Submittal
- Contractor Bidding
- Construction





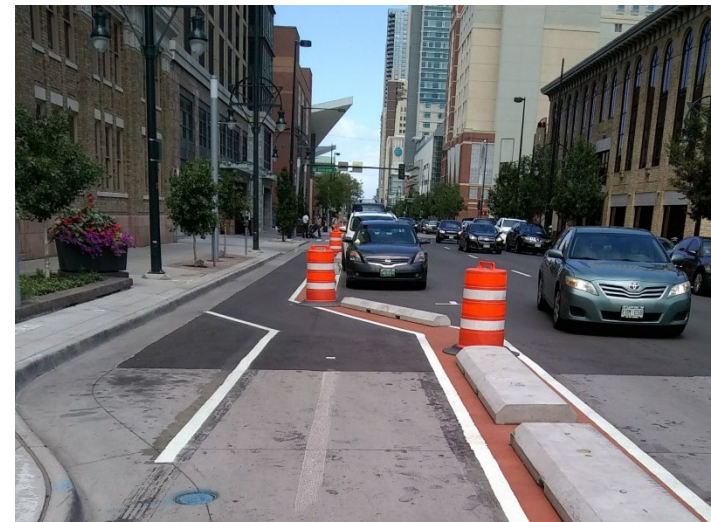
EXISTING (Clifford Street looking toward Jewelry District)



PROPOSED

# PHASE 1 DETAILS

- Maintains on-street parking
- Vertical separation in trail buffer (between shared use path and on street parking): mix of planters and precast concrete curb
  - We have heard from community members that planters are important and are identifying maintenance options
  - Precast curb is relatively inexpensive to install and requires little to no maintenance
- Both are effective at protecting trail users





# BROAD STREET CONCEPT PLAN PROCESS

## 1. Public Opinion and Engagement throughout 2018

- Walkabout/Bikeabout to identify issues on Broad Street with CAG and elected officials
- Public Meeting #1 to identify design preferences, challenges on Broad Street, and educate the community on potential options
- Public Meeting #2 to workshop design solutions
- Street Team has attended over 15 community events including recurring appearances at several markets

## 2. Tested Preferred Concept During Demonstration Project

- Summer 2018: Demonstration Project to test design option in real time and build community support
- Design > Test > Refine > Build





# DEMONSTRATION DAY VIDEO

# BROAD STREET CONCEPT

EXISTING



South of Plenty Street



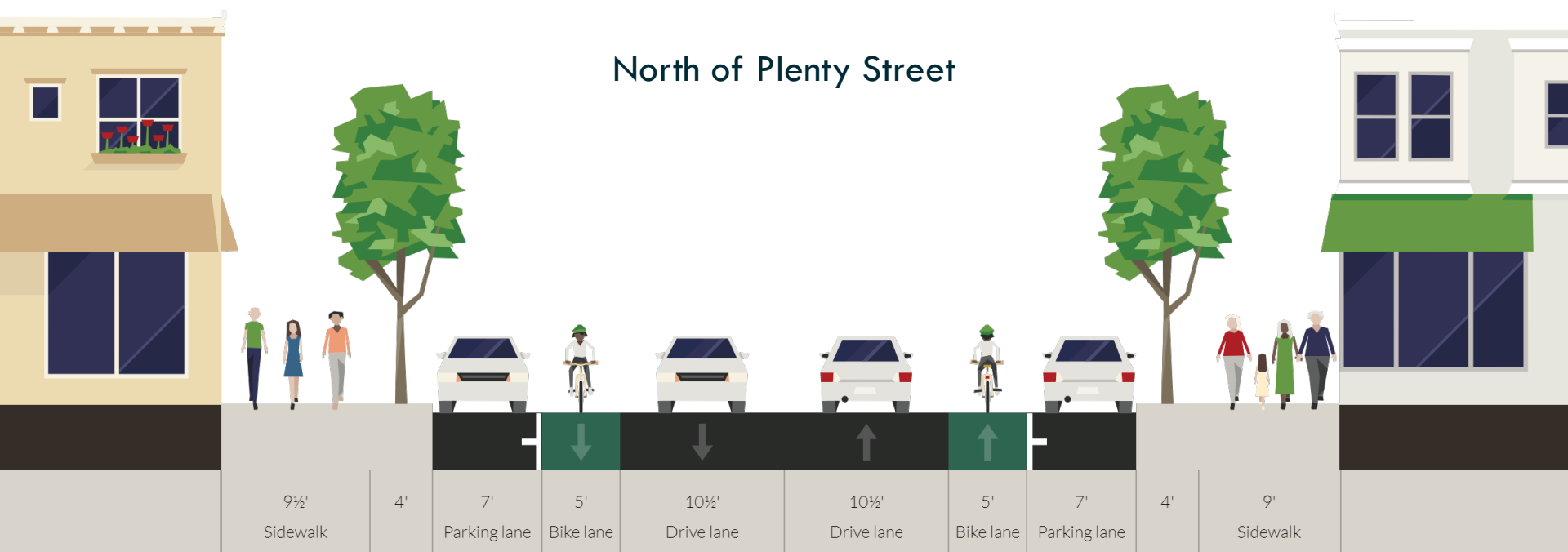


EXISTING

# BROAD STREET CONCEPT

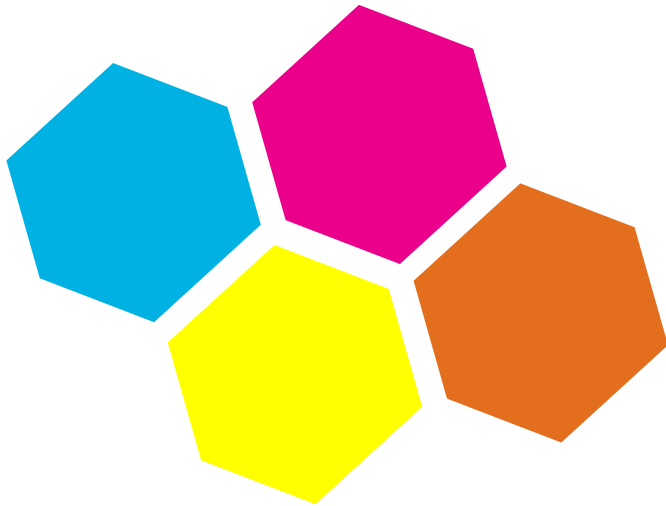


North of Plenty Street



# GROUND MURAL IMPLEMENTATION

- Artist RFQ process through the Department of Art, Culture, and Tourism
- Defined color palette for artists





# CITY WALK STENCIL AND WAYFINDING





# CITY WALK STENCIL AND WAYFINDING



# CITY WALK STENCIL AND WAYFINDING



# CITY WALK WAYFINDING SIGNAGE

**CITY WALK**  
CONNECTING PROVIDENCE NEIGHBORHOODS

- ↑ **TRINITY SQUARE**  
🚶 5 min   🚲 2 min
- ➡ **DOWNTOWN**  
🚶 24 min   🚲 8 min
- ➡ **INDIA POINT PARK**  
🚶 45 min   🚲 14 min
- ↓ **R. WILLIAMS PARK**  
🚶 30 min   🚲 9 min

**CITY WALK**  
CONNECTING PROVIDENCE NEIGHBORHOODS

- ➡ **TRINITY SQUARE**  
🚶 6 min   🚲 3 min
- ➡ **DOWNTOWN**  
🚶 26 min   🚲 8 min
- ➡ **INDIA POINT PARK**  
🚶 47 min   🚲 14 min
- ↓ **R. WILLIAMS PARK**  
🚶 28 min   🚲 8 min

**CITY WALK**  
CONNECTING PROVIDENCE NEIGHBORHOODS

- ↑ **TRINITY SQUARE**  
🚶 22 min   🚲 7 min
- ↑ **R. WILLIAMS PARK**  
🚶 46 min   🚲 14 min
- ➡ **DOWNTOWN**  
🚶 5 min   🚲 3 min
- ↓ **INDIA POINT PARK**  
🚶 22 min   🚲 7 min



# CITY WALK GATEWAY SIGN



Visit the project website to sign up for our email list:

[www.providenceri.gov/planning/citywalk](http://www.providenceri.gov/planning/citywalk)

Have an existing meeting or event you would like us to attend?

Invite us!

Alex Ellis, [aellis@providenceri.gov](mailto:aellis@providenceri.gov), 401-680-8400

Facebook/Twitter: @ProvPlanning

***#citywalkpvd***

