

ROGER WILLIAMS PARK GATEWAY CENTER

CITY OF PROVIDENCE



ROGER WILLIAMS PARK GATEWAY CENTER COMMUNITY MEETING

REUNIÓN COMUNITARIA CENTRO DE BIENVENIDA DEL PARQUE ROGER WILLIAMS

WHEN / CUANDO: Thursday, October 24, 2019 | Jueves, 24 de Octubre, 2019 | 6:00pm – 7:30pm

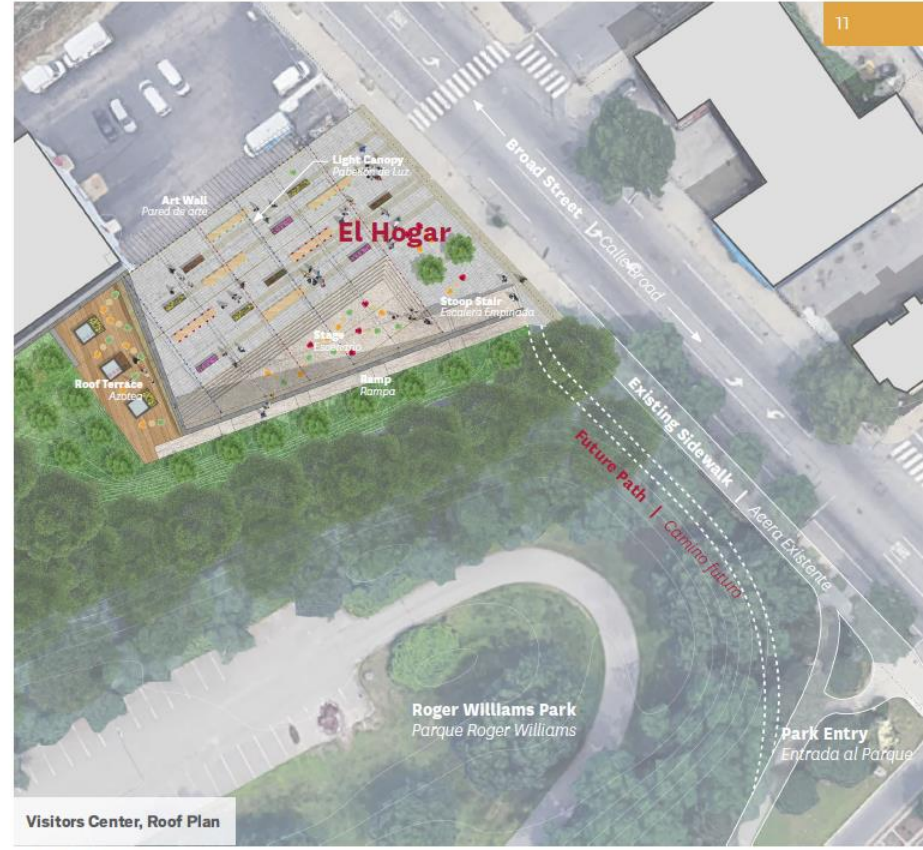
WHERE / DONDE: Bomes Theater | 1017 Broad Street Providence RI 02905

designLAB architects

kmdg







Visitors Center, Roof Plan



Drawings



inFORM studio
Design Under Sky
Green International Affiliates, Inc.
Structure Works, Inc.



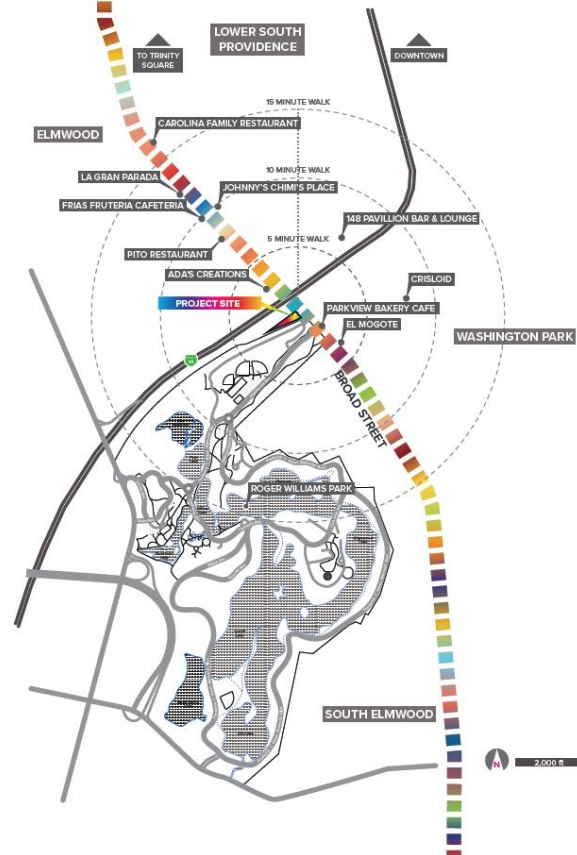
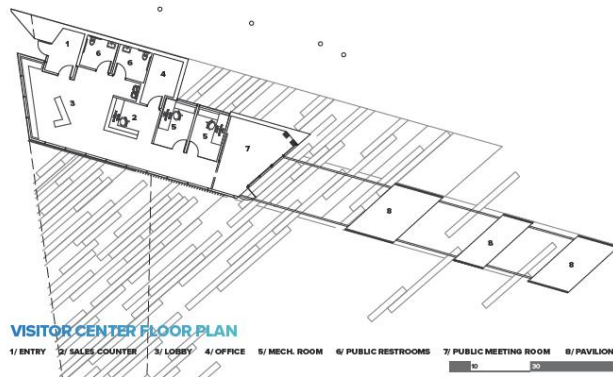
IDENTITY / INCLUSIVITY / SUSTAINABILITY

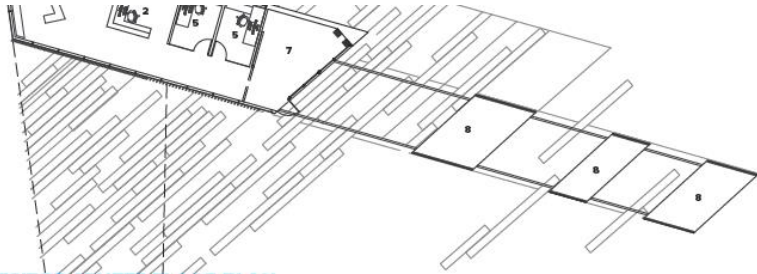
PROJECT NARRATIVE

THE ROGER WILLIAMS PARK ST. GATEWAY & VISITOR'S CENTER REPRESENTS AN OPPORTUNITY TO ENHANCE THE DYNAMIC INTERFACE BETWEEN BROAD ST. & ROGER WILLIAMS PARK, CREATING AN ACCESSIBLE & SAFE URBAN PARK WHICH WILL INVIGORATE, EDUCATE AND SEW TOGETHER A DISCONNECTED LANDSCAPE TO ESTABLISH A SIGNATURE GATEWAY. OUR APPROACH INTRODUCES HIGH-QUALITY PROGRAMMING AND SEVERAL SITE INTERVENTIONS WHICH ARE RESTORATIVE IN NATURE AND PROVIDE A TANGIBLE DISPLAY OF INTEGRATED GREEN STRATEGIES.

The new RWP Broad St. Gateway & Visitor's Center will perform at both a neighborhood and regional level, creating identity and strengthening community. It will exist as a microcosm of the "Peoples Pleasure Ground", a welcoming, educational garden to the surrounding neighborhoods that leads visitors through a transition of landscaped space, from the "Urban to Wild". At the entry an open permeable hard-scape space creates a flexible Public Rest and Picnic Plaza, usable for a variety of outdoor programs and events tied to Roger Williams Park and the new Visitor's Center. This space transitions into a "Stormwater Play Garden" that functions as both the primary collector of site water and also as a natural play area. Sculpted grass landforms and log

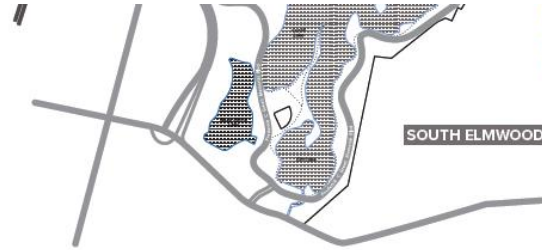
bridges allow visitors to playfully explore the native meadow like planting of the central rain garden. Raised planters serve as demonstration gardens for community education and participation while heavily planted "eco-edges" inform and engage visitors, creating a beautiful and vibrant park border. Moving deeper into the site from the Stormwater Garden, visitors find themselves entering a "Forest Ecology" in which a meandering path leads one through a landscape of densely planted young native trees with a low understory ground-plane planting, only to discover at the end of the path a "Treetop Tower" that provides a unique vista back through the garden, towards the Broad St. Gateway and the Visitor's Center.





VISITOR CENTER FLOOR PLAN

- 1/ ENTRY
- 2/ SALES COUNTER
- 3/ LOBBY
- 4/ OFFICE
- 5/ MECH. ROOM
- 6/ PUBLIC RESTROOMS
- 7/ PUBLIC MEETING ROOM
- 8/ PAVILION FOLLEYS

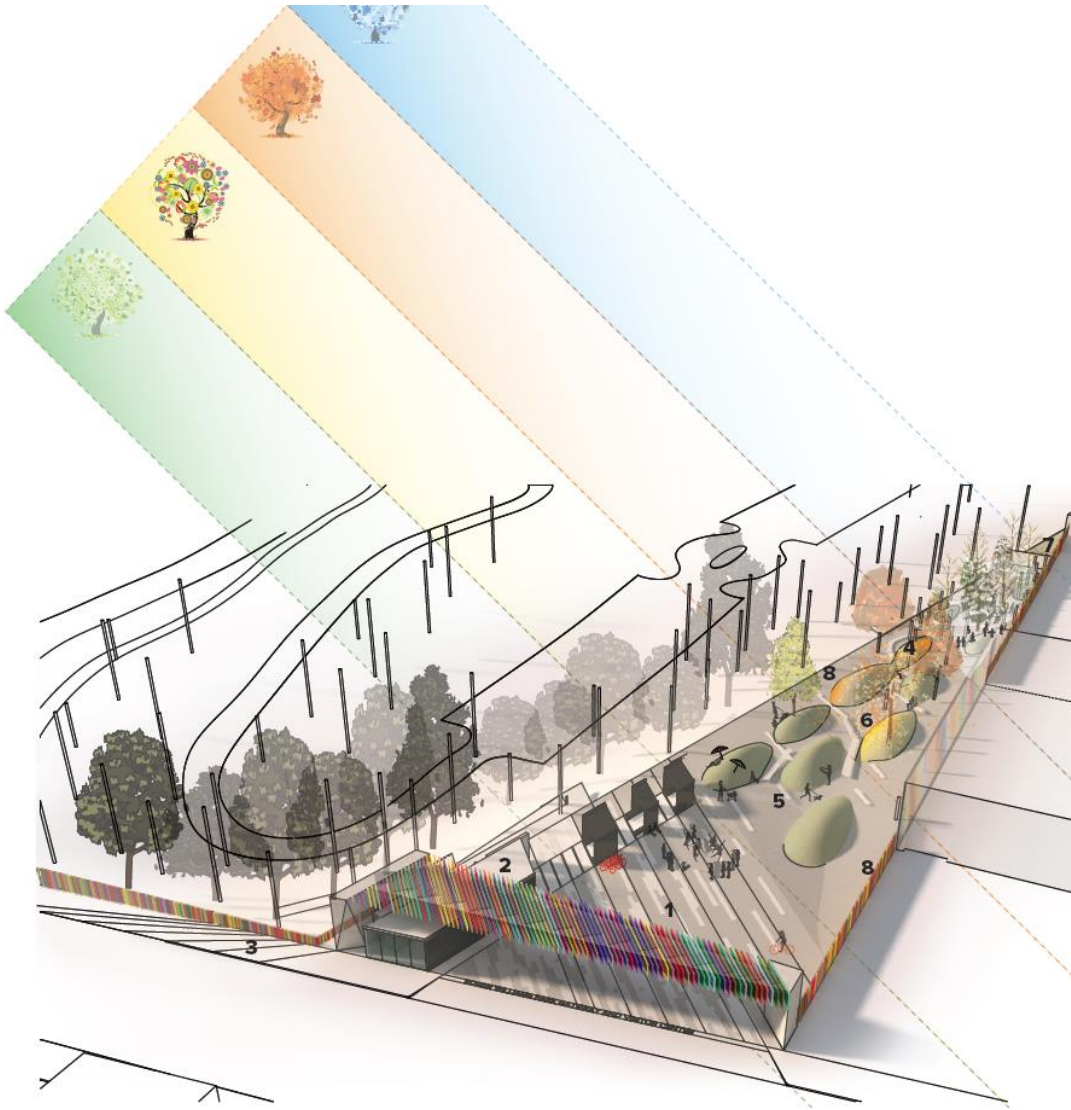




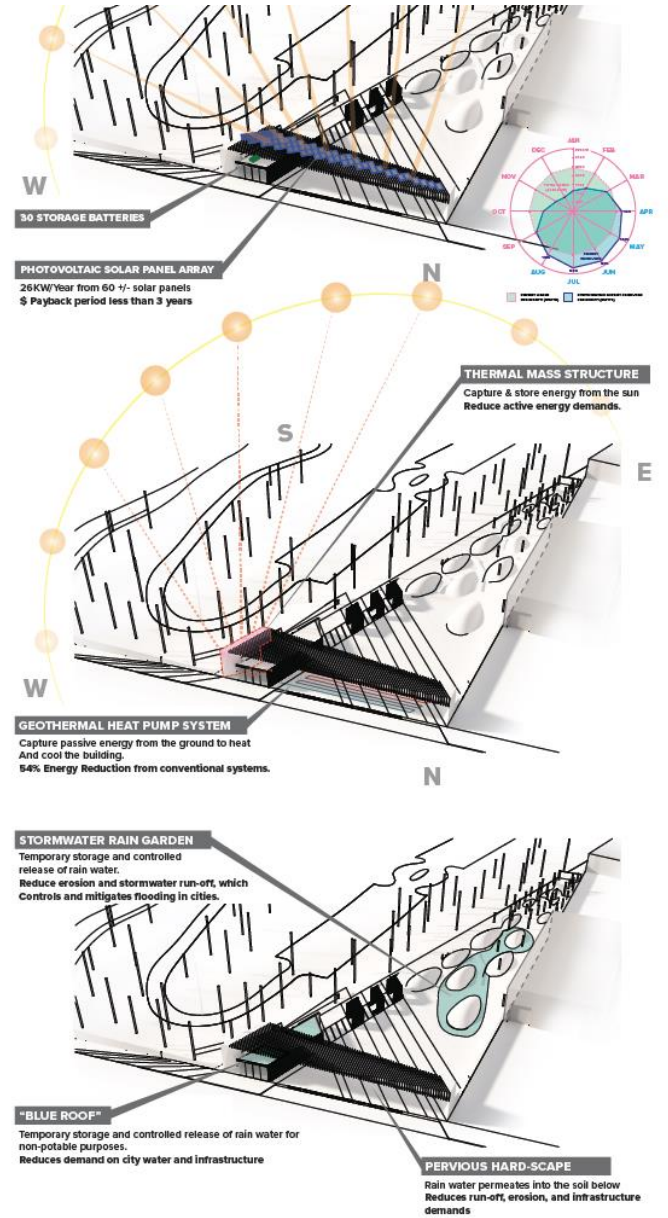
SITE PLAN

- 1 / Open Public Plaza**
 Designed for rest or play, this active space will provide ample flexibility for both small and large gatherings, recreational events, nature walks, vendor & food truck parking, picnic areas, demonstration gardens for community planting events, and the JUMP bike share hub. The plaza displays several green infrastructure practices including pervious paving which will help slow, cool, and cleanse on-site rainwater.
- 2 / Visitor's Center**
 The programming for this Net Zero Energy building includes a Lobby/Exhibit space for Park & Neighborhood Information/History; Ticket & Concessions; Staff Offices; A Community Meeting Room; and Public Restrooms.
- 3 / Green Streetscape**
 Extended landscaping and street trees strengthen connectivity between the Visitor's Center site and RWP's Hawthorne Ave. entrance.
- 4 / Ecology Path & Trail**
 Promoting activity and wellness, a series of connected paths and trails would allow visitors to venture through the entire site.
- 5 / Stormwater Play Garden**
 Sculpted grass landforms are connected by a series of log constructs which bridge a demonstrative rain garden strategically placed to intercept and absorb on-site stormwater runoff. The rain garden will serve as an ecological bowl which will filter sediment and pollutants and allow the captured water to slowly recharge below grade aquifers. Planted with species native to the Providence region, the rain garden will require minimal maintenance and provide food and habitat for local wildlife. Outdoor seating, plantings, and local materials are integrated into functional art as a demonstration of regionally-relevant green infrastructure.
- 6 / Woodland Ecology**
 A meandering path through a densely planted landscape provides educational exposure to a native forest and culminates in a lookout "Treetop Tower" that provides visitors with a unique vista through the garden and surrounding park landscape.
- 7 / Service Shed & Prep Area**
 A small working area for storage, material staging, etc. Secured for staff access constructed with pervious paving.
- 8 / Eco-Edges**
 Heavily painted zones engage visitors & creating a beautiful and vibrant park border.

The RWP Broad Street Gateway & Visitor's Center will increase sustainability awareness by reviving a neglected site and enhancing connectivity between the park and the community. The vibrant collection of restaurants, businesses & homes that line Broad Street reflect an expressive identity that manifests in a new park threshold, "El Portón", a dramatic 95' wide framed entry which draws inspiration from the culture of the local Latin American community. As visitors enter the site they are guided into a wholly transformed landscape. The RWP Broad Street Gateway & Visitor's Center will accelerate the principles of green design and emerge as a sustainable catalyst, expanding the image of Providence as a green economy and providing a new model for urban redevelopment. Leading by example, the City will be able to demonstrate real-time measures and methods that will have transformed this derelict site into a healthy environment for rest & play. Both the building and site design will aim to enhance the quality of life for residents and visitors alike and outwardly display the contemporary practice of sustainable design, striving to increase public awareness and promote a more comprehensive approach to healthier buildings and communities.



BORROWING FROM THE DIVERSE CULTURAL VIBRANCY OF THE CITY, COLOR REPRESENTS THE PEOPLE OF PROVIDENCE. IT SYMBOLIZES THE HERITAGE OF THE LOCAL COMMUNITY, WHICH IS PORTRAYED THROUGH THE COLLECTION OF RESTAURANTS, BUSINESSES & HOMES ALONG BROAD STREET. IT REPRESENTS THE FUTURE LEADERS - THE STUDENTS - FROM THE MANY LEARNING INSTITUTIONS IN THE AREA. WITH THIS CONCEPT, COLOR ACTS AS A BEACON FOR THE 'THE PEOPLE'S PARK,' DRAWING VISITORS IN TO CELEBRATE THE MANY 'GEMS' WITHIN THE GROUNDS.



R2

A JOINT VENTURE

ross barney architects

Ronnette Riley Architect

ROGER WILLIAMS VISITOR CENTER

The focus of our approach is to create a recognizable identity for Roger Williams Park through the design of the Visitor's Center and site, to connect the site to the main body of the park and to activate new recreation and social life on the site.



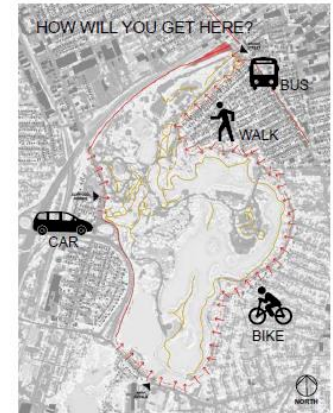
Nature



Recreation & Culture



Transportation



Existing Site Plan



Potential Program Features



Project Objectives

Understand

Work with all concerned parties including the community and other stakeholders to understand site, community & requirements.

Welcome

The new Visitor Center will provide amenities and activities for all community demographics.

Connect

The gateway will provide a fluid connection between the green park landscape and the harsh urban hardcape.

Adapt

The Visitor's Center design will allow for flexible programming for a wide range of uses & users.

Sustain

Prioritize environmental sustainability with a responsible solution that is economically & culturally sustainable.

Innovate

Explore and develop an innovative architectural design to provide a state-of-the-art Visitor Center to Roger Williams Park.

01 BEACON

Communicate and Invite - A sculptural element becomes a beacon to the site, and a switchback landscape feature connects users to the park.



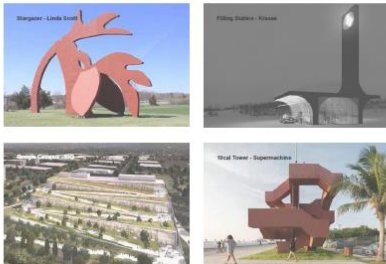
Plan View



Cross Section



Precedents



02 BRIDGE

Connect - An integrated Visitor's Center and pedestrian bridge seamlessly connect the neighborhood to the park.



Plan View



Cross Section



Precedents



03 CANOPY

Reforest - The park's tree canopy is extended with new trees, abstract trees and green roofs to provide shelter for indoor and outdoor activities.



Plan View



Cross Section

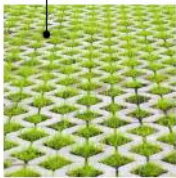


Precedents

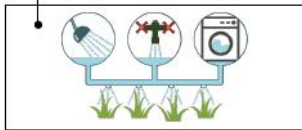


ENVIRONMENTAL FEATURES

Green infrastructure and sustainable strategies will be an integral part of the building, landscape and site design, based on the guidelines of the Living Building Challenge.



Permeable Pavers



Greywater Recycling



Reclaimed Materials



Solar Trees



Green Roof



Thermal Mass



Experimental Farming



Wildlife Habitat

Sustainable Materials



Passive Cooling



Rain Gardens & Wetlands



Solar Tubes



**ULTRAMODERNE +
STIMSON**

ROGER WILLIAMS PARK and LA BROA GATEWAY AND VISITORS CENTER

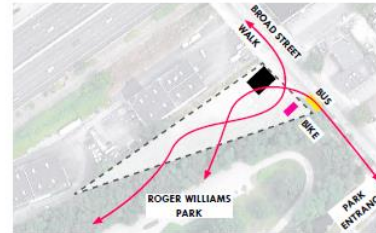


VIEW OF THE VISITORS CENTER FROM BROAD STREET

BRIDGING THE NATURAL AND CULTURAL LANDSCAPES



THE SITE IS THE INTERFACE BETWEEN THE PARK, BROAD STREET, AND SURROUNDING NEIGHBORHOODS.

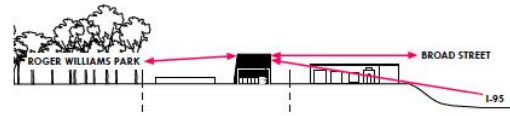


A HINGE BETWEEN CITY AND PARK

The project makes a critical connection between the city and the park, improving pedestrian, bike, and transit access, and inviting in new audiences. Our design seeks to intensify the adjacent cultural and natural landscapes on site, creating physical and visual connections to both the city and the park.

A PROVIDENCE LANDMARK

The building's height and striking materiality create a visible, inhabitable landmark, announcing its presence to the Broad Street corridor in both directions, and even to the freeway. Broad Street's bold colors are reinterpreted in a multilayered, diaphanous trellis, extending upwards and reflecting both the local architectural culture and the park's greenery.



A CONTEMPORARY OBSERVATORY

The building is not just an object to be looked at, but a lens back on the park and the city. Its public roof terrace is simultaneously an observatory on the city, nature, and the sustainable technologies that permeate both building and site. The plaza connects directly to the roof terrace, creating opportunities for education, community events, and park fundraisers.



A SPACE FOR THE COMMUNITY

The building and site as a whole become a new focal point for neighborhood activity. The building provides robust, flexible space that expands its offerings, doing double duty with the plaza for events, exhibitions, picnics, and more. The landscape is organized as a series of lush, outdoor rooms, providing spaces for a variety of activities and educational purposes.



THE DESIGN BUILDS ON ROGER WILLIAM PARK'S LANDMARKS AND NATURAL SPLENDOR AND CONNECTS THEM TO BROAD STREET'S DISTINCT CULTURAL HERITAGE.



AERIAL VIEW: LANDSCAPE AS A SERIES OF OUTDOOR ROOMS AND GREEN GATEWAY TO THE PARK.



1. COMMUNITY PLAZA



2. OUTDOOR CLASSROOM



3. ENERGY MEADOW



4. NATURE PLAY



5. PICNIC GROVE



6. VIEWING TERRACE



7. PHYTOREMEDIATION GARDEN



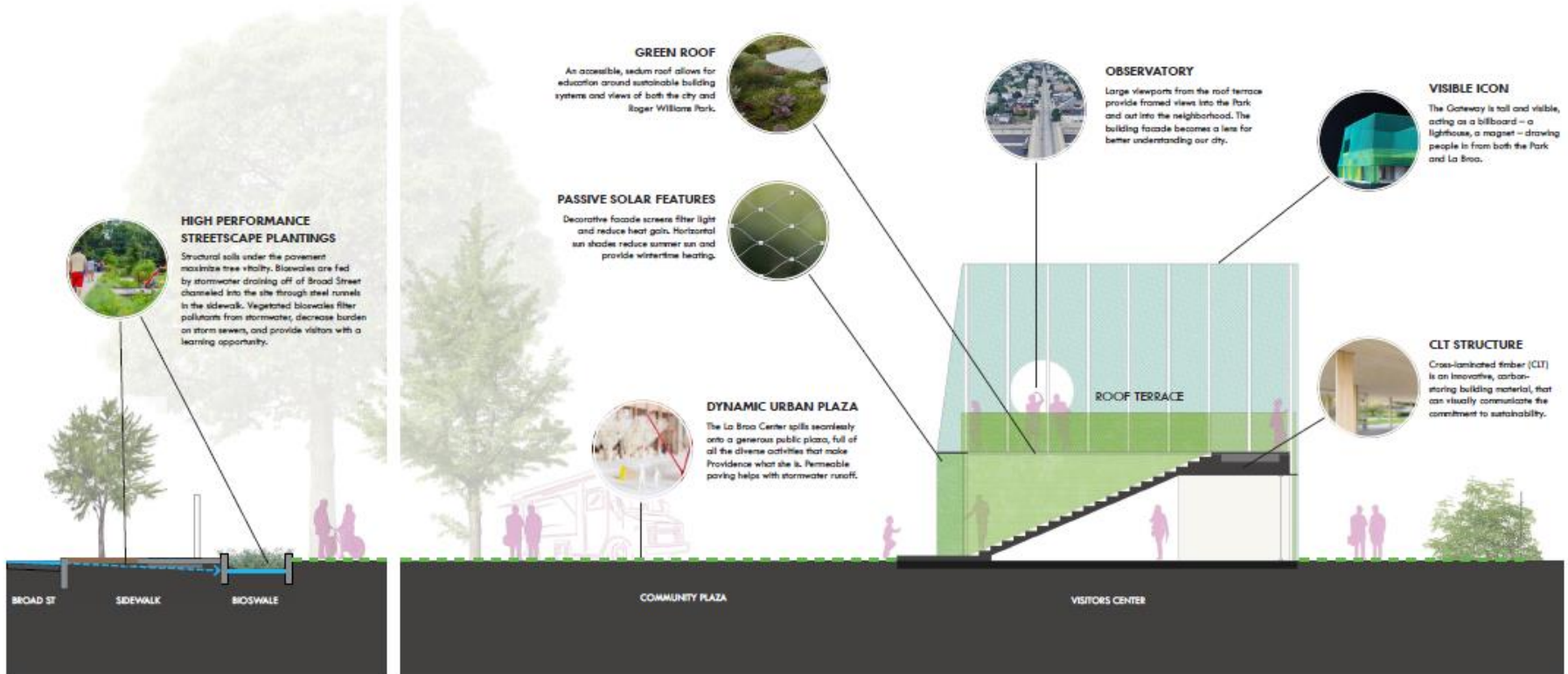
AERIAL VIEW: LANDSCAPE AS A SERIES OF OUTDOOR ROOMS AND GREEN GATEWAY TO THE PARK.



6. VIEWING TERRACE



7. PHYTOREMEDIATION GARDEN



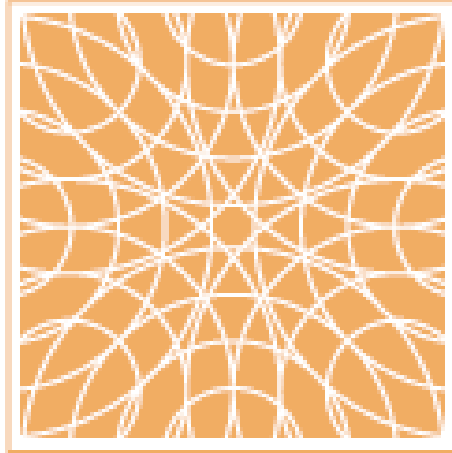
SECTION AT BROAD STREET

SITE SECTION HIGHLIGHTING SUSTAINABLE PRACTICES



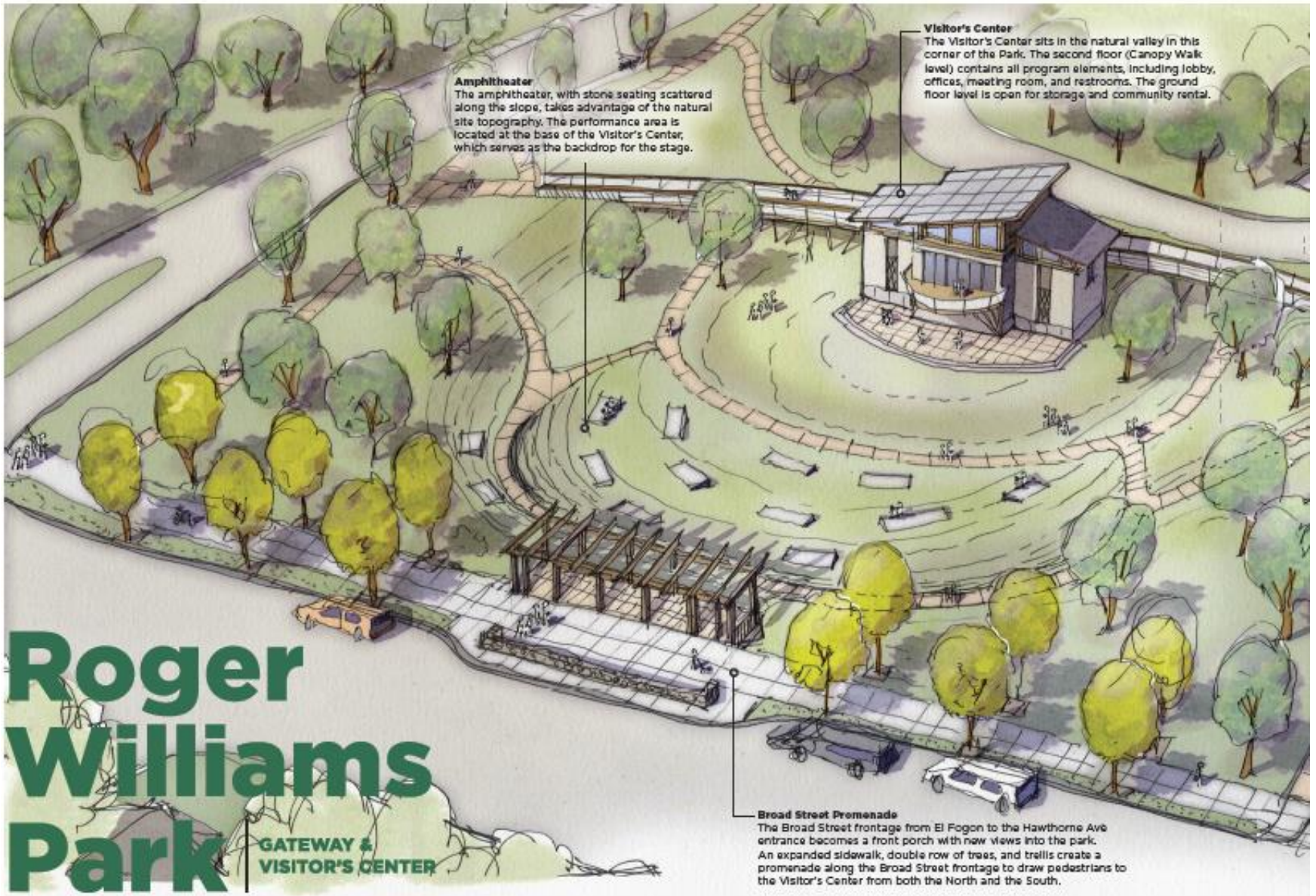
THE VISITORS CENTER: INTERIOR VIEW SHOWING THE ROOF STAIR AS ARCHITECTURAL FEATURE, VIEWS FROM BROAD STREET, AND THE ROOF TERRACE VIEWED FROM ABOVE THE PLAZA.





UNION STUDIO

ARCHITECTURE & COMMUNITY DESIGN



Amphitheater

The amphitheater, with stone seating scattered along the slope, takes advantage of the natural site topography. The performance area is located at the base of the Visitor's Center, which serves as the backdrop for the stage.

Visitor's Center

The Visitor's Center sits in the natural valley in this corner of the Park. The second floor (Canopy Walk level) contains all program elements, including lobby, offices, meeting room, and restrooms. The ground floor level is open for storage and community rental.

Roger Williams Park

GATEWAY & VISITOR'S CENTER

Broad Street Promenade

The Broad Street frontage from El Fagon to the Hawthorne Ave entrance becomes a front porch with new views into the park. An expanded sidewalk, double row of trees, and trellis create a promenade along the Broad Street frontage to draw pedestrians to the Visitor's Center from both the North and the South.

Along the Broad Street entrance to Roger Williams Park, there is a large difference in grade and sensory experience between the Park and the surrounding neighborhood. There is a 20 foot drop in elevation from the street to the northeast corner of the park, adjacent to the El Fogon site. Additionally, when standing on the site, it is difficult to ignore the constant hum of highway traffic and the surrounding industrial atmosphere. Instead of trying to pull the Park into the El Fogon site to surround the Visitor's Center and fight the noise and Industrial surrounds, this proposal embeds the Visitor's Center within the Park, enlivening an underutilized portion of the Park and connecting it directly to Broad Street and the Hawthorne Avenue entrance. The challenge of the Gateway and Visitor's Center project is how to connect people, and orient them, to the Park - in short: *How to bridge both the physical and perceived gap and span the divide?*



Visitor's Center at El Fogon Property

The El Fogon parcel is separated from the Park both by topography and association. The dramatic change in grade between the site and the adjacent portion of the Park makes it a difficult jumping off point for exploration. Additionally, the area of the Park immediately adjacent to the El Fogon site is largely inactive, as it serves as an overflow parking lot for the Zoo. A successful Visitor's Center will capitalize on direct connections to both the neighborhood and an activated section of the Park.

Design Objectives



Roger Williams Park Gateway

A new, state of the art entrance to Roger Williams Park and to the diverse Washington Park neighborhood.



Accessible Community Space

The Visitor's Center site serves as backdrop for a range of community events and celebrations, such as festivals, tours, and concerts.



Community Connection

The Visitor's Center brings the neighborhood into the Park and improves the pedestrian experience along Broad Street.



Local Business Opportunities

The new market at the El Fogon site provides a place for local vendors to sell food, crafts, and produce.



UNION STUDIO
ARCHITECTURE & COMMUNITY DESIGN

RYAN ASSOCIATES

Canopy Walk

A canopy walk above the valley connects the Hawthorne Avenue entrance and the El Fogon site entrance to the second floor deck of the Visitor's Center.

Grove of Trees

The new tree grove carries the Park into the El Fogon property and regenerates the site by phyto-remediating the oil in the soil. The grove helps buffer the El Fogon property from the constant buzz of highway traffic and the neighboring industrial properties.

Food Truck and Market Plaza

A central, open-air market structure provides a space for local vendors to aggregate. Food trucks line the perimeter; visitors can enjoy their food at the picnic tables amongst the newly planted grove of trees.



Site Features

- | | | |
|-------------------------------|-----------------------------------|------------------------------|
| 1 Pedestrian Promenade | 5 Vehicular Gate | 9 Canopy Bridge |
| 2 Glade of Trees | 6 Information Display | 10 Hawthorne Ave. Entrance |
| 3 Picnic Tables | 7 Visitor Center | 11 New Parking |
| 4 Food Truck and Market Plaza | 8 Amphitheater with Stone Seating | 12 Existing Parking/Drop-off |

Destination and Jumping-off Point

Together, the Market Plaza and Grove, the Broad Street Promenade, the Canopy Walk, the Visitor's Center, and the New Amphitheater frame and define the space, become a destination in and of themselves, and, in turn, invite exploration of the Park beyond.

area that separates the El Fogon parcel from this end of the park.



How can the new Visitor's Center become a gateway to the community?

Share your thoughts with us using **#MYRWGATEWAY** & tag **@unionstudioarch**

