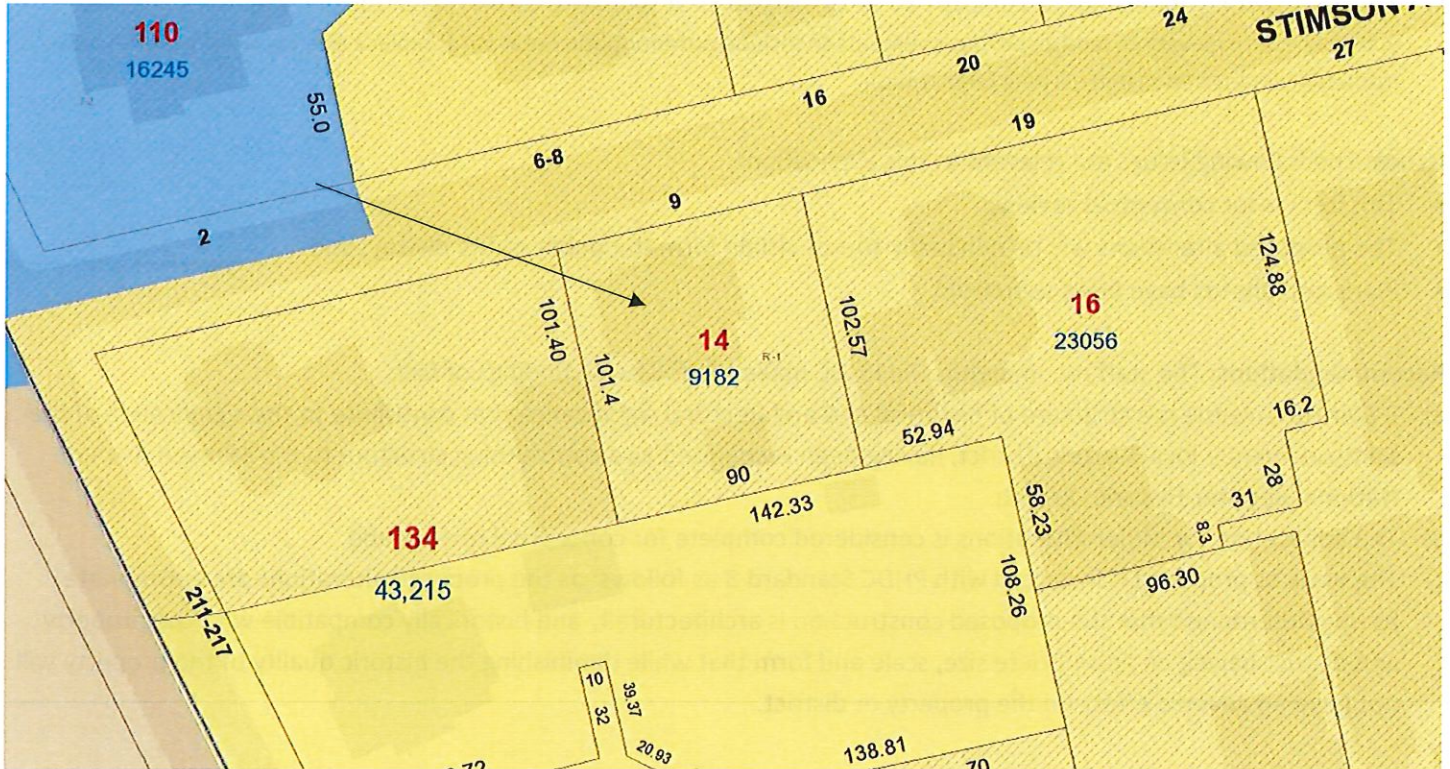


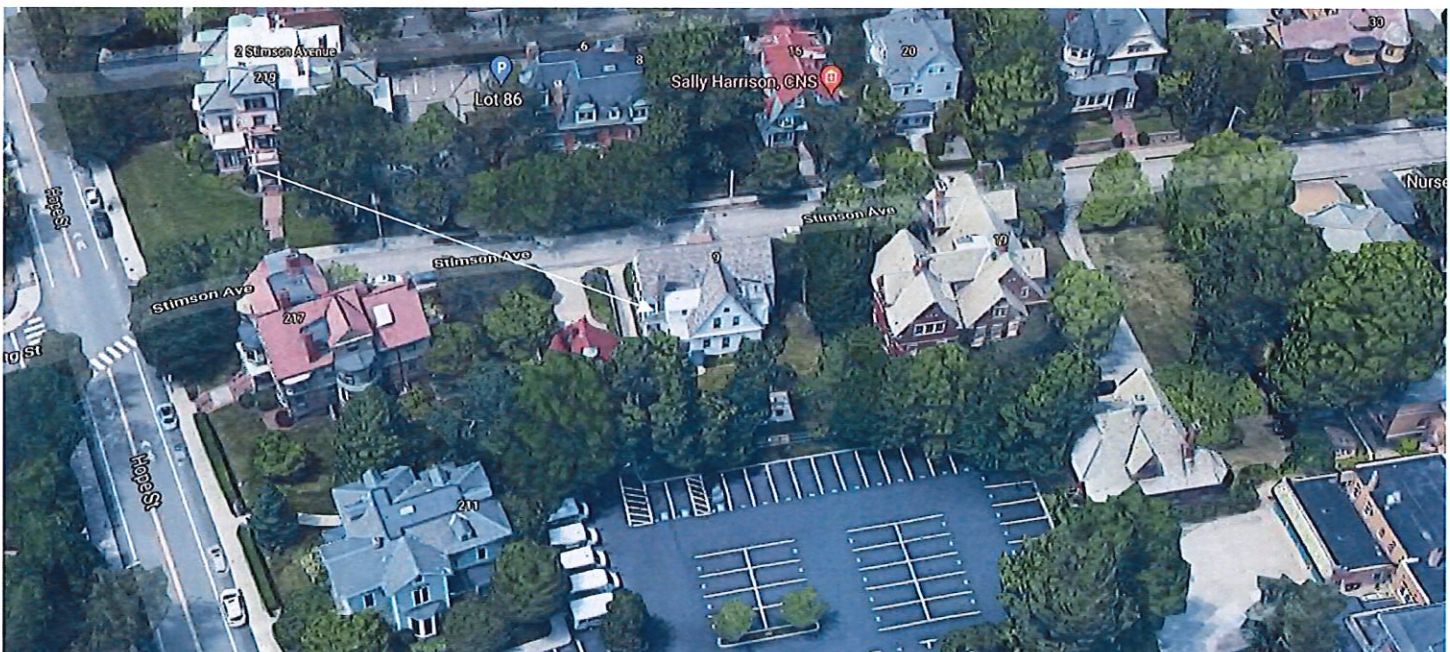
4. CASE 21.052, 9 STIMSON AVENUE, Harry A Waldron House, c1894 (STIMSON AVENUE)

Two and one-half stories faced in grey brick, wood and slate beneath a gambrel roof; panelled entrance porch; picturesque features of Queen Anne Style with some applied Colonial Revival detail.

CONTRIBUTING



Arrow indicates 9 Stimson Avenue.



Arrow indicates project location, looking north.

Applicant/Owner: Gary Esposito for The Wheeler School, 216 Hope Street, Providence, RI 02906

Architect: Ed Wojcik Architect, Ltd., One Richmond Square, Providence, RI 02906

Proposal: The scope of work proposed consists of Major Alterations and includes:

- The applicant is requesting the enclosure of the existing porch at southwest corner; porch addition with stairs and slope walkway, south elevation; landscape improvements to include outdoor patio I rear yard; replace existing windows with new insulated windows to match existing fenestration.

Issues: The following issues are relevant to this application:

- This item is for conceptual review;
- The proposed alterations will be minimally-to-not visible form the public rights-of-way; and,
- Plans and photos have been submitted.

Recommendations: The staff recommends the PHDC make the following findings of fact:

- a) 9 Stimson Avenue is a structure of historical and architectural significance that contribute to the significance of the Stimson Avenue local historic district, having been recognized as a contributing structure to the Stimson Avenue National Register Historic District;
- b) The application for Major Alterations is considered complete for conceptual review; and,
- c) The work as proposed is in accord with PHDC Standard 8 as follows: as the proposed alterations are appropriate having determined that the proposed construction is architecturally and historically compatible with the property and district having an appropriate size, scale and form that while diminishing the historic quality of the property will not have an adverse effect on the property or district.

Staff recommends a motion be made stating that: The application is considered complete. 9 Stimson Avenue is a structure of historical and architectural significance that contribute to the significance of the Stimson Avenue local historic district, having been recognized as a contributing structure to the Stimson Avenue National Register Historic District. The Commission grants Conceptual Approval of the proposal as submitted having determined that the proposed alterations are appropriate as the proposed alterations are architecturally and historically compatible with the property and district having an appropriate size, scale and form that while diminishing the historic quality of the property will not have an adverse effect on the property or district, citing and agreeing to the recommendations in the staff report, with staff the applicant ot return for final approval at a subsequent meeting.



FIGURE 1: North Elevation



FIGURE 2: West Elevation



FIGURE 3: South Elevation



FIGURE 4: East Elevation



FIGURE 5: North Elevation
(First Floor Window)



FIGURE 6: North Elevation (Third Floor Window)



FIGURE 6: West Elevation (First Floor Window)



FIGURE 7: South Elevation
(First Floor Window)



FIGURE 8: South Elevation (Second Floor Window)



FIGURE 8: East Elevation (First Floor Window)

Pella® Reserve™

Traditional Wood & Clad/Wood

EXHIBIT 9



Exquisitely designed windows and doors with unparalleled historical detailing.

Double-Hung Interior



Double-Hung Exterior



- Historical details**
 Our most historically authentic line of wood windows and patio doors. Featuring through-stile construction, deliberate proportions and intricate profiles. Pella Reserve - Traditional products are the ideal choice for historical renovations and traditional building projects.
- Authentic hardware**
 Complement your project with historically authentic spoon-lock window hardware. Our Antiek casement window hardware is inspired by period furniture to deliver authentic traditional style.
- Architectural interest**
 Featuring the industry's only foam spacer solution, Pella's Integral Light Technology® grille helps capture the look of true-divided-light without sacrificing energy performance. Further your aesthetic with the putty profile, recreated with historically accurate angles – providing meaningful depth and a realistic shadow. Pella Reserve products offer the industry's deepest sash dimension.
- Virtually unlimited customization**
 If you can dream it, we can build it with our most customizable product line. From extra tall to extra wide, Pella can craft unique windows that complement your aesthetic. Custom sizes, grille patterns and designs, finishes, wood types and glass options are available.
- Tailor-made solutions**
 From preliminary drawings to installation, Pella's expert team of architects, engineers, drafters and consultants can work to deliver custom window and door solutions for your project. Partner with Pella to achieve your unique vision without concessions.
- Intentional innovation**
 Winner of the 2019 Most Innovative Window from Window and Door Magazine, the Integrated Rolscreen® retractable screen preserves aesthetic view. It is a double- and single-hung screen that appears when you open the window, and rolls away, out of sight, when you close it.
- Durable interiors and extruded aluminum exteriors**
 To help save you time on the jobsite, interior finish options are available in four paints, eleven stains and primed and ready-to-paint. To complement your exterior aesthetic, choose from our carefully curated color palette or define your own custom color for your project.
- ENERGY STAR® certified¹**
 Pella wood products offer energy-efficient options that will meet or exceed ENERGY STAR guidelines in all 50 states. Pella Reserve products with triple-pane glass have been awarded the ENERGY STAR Most Efficient Mark in 2021.¹
- Testing beyond requirements**
 At Pella, our products are tested beyond requirements to help ensure they have long-lasting performance and reduce call-backs for you.
- Best limited lifetime warranty²**
 Pella Reserve products are covered by the best limited lifetime warranty in the business for wood windows and patio doors.²

Available in these window and patio door styles:



Special shape windows also available.

^{1,2} See back cover for disclosures.

Product Specifications

Window & Patio Door Styles	Min. Width	Min. Height	Max. Width	Max. Height	Performance Class & Grade	Performance Values			Frame / Install
						U-Factor	SHGC	STC	
Awning	13-3/4"	13-3/4"	59"	59"	LC40-CW50	0.25-0.29	0.18-0.47	27-35	Fold-out Fin, Block Frame, EnduraClad Exterior Trim / Brickmould
Precision Fit Awning	17"	17"	53"	29"	R45-CW50	0.28-0.32	0.18-0.47	27-30	Pocket Replacement
Casement	13-3/4"	13-3/4"	47"	108"	R35-CW50	0.25-0.29	0.18-0.47	27-34	Fold-out Fin, Block Frame, EnduraClad Exterior Trim / Brickmould
Precision Fit Casement	17"	17"	35"	73"	R35-CW50	0.28-0.33	0.18-0.47	27-30	Pocket Replacement
Fixed Casement	10"	10"	144"	144"	R35-CW50	0.25-0.29	0.18-0.47	27-35	Fold-out Fin, Block Frame, EnduraClad Exterior Trim / Brickmould
Precision Fit Fixed Casement	17"	17"	59"	73"	R45-CW50	0.28-0.33	0.18-0.47	27-30	Pocket Replacement
Double-Hung	14"	24-3/8"	48"	96"	CW30-CW50	0.25-0.30	0.19-0.53	28-35	Fold-out Fin, Block Frame, EnduraClad Exterior Trim / Brickmould
Precision Fit Double-Hung	13-1/2"	23-3/4"	48"	84"	CW40-CW50	0.25-0.31	0.19-0.53	26-30	Pocket Replacement
Monumental Hung	13-3/4"	24"	72"	144"	LC25-CW50	0.25-0.30	0.17-0.47	29-34	Fold-out Fin, Block Frame, EnduraClad Exterior Trim / Brickmould
In-Swing Hinged Patio Door (Single)	18"	36"	48"	199-1/2"	LC40-LC55	0.25-0.29	0.14-0.40	31-35	
In-Swing Hinged Patio Door (Double)	36"	36"	96"	119-1/2"	LC40-LC55	0.25-0.29	0.14-0.40	31-35	
Out-Swing Hinged Patio Door (Single)	18"	36"	48"	119-1/2"	R50-LC70	0.25-0.30	0.14-0.39	30-36	
Out-Swing Hinged Patio Door (Double)	36"	36"	96"	119-1/2"	R50-LC70	0.25-0.30	0.14-0.39	30-36	
Sliding Patio Door (O)	30-3/4"	74"	60-3/4"	119-1/2"	LC40-LC70	0.29-0.32	0.15-0.42	-	
Sliding Patio Door (OX, XO)	59-1/4"	74"	119-1/2"	119-1/2"	LC35-LC65	0.29-0.32	0.15-0.42	29-35	
Sliding Patio Door (OXO)	90"	74"	180"	119-1/2"	LC30-LC45	0.29-0.32	0.15-0.42	-	
Sliding Patio Door (OXXO)	116-3/8"	74"	236-3/8"	119-1/2"	LC25-LC40	0.29-0.32	0.15-0.42	-	
Multi-Slide Patio Door	40-1/4"	50-1/2"	701-5/8"	119-1/2"	R15-LC25 ¹	0.30 - 0.36	0.15 - 0.46	31	
Bifold Patio Door	31-3/4"	55-1/2"	312"	119-1/2"	R15-LC25 ¹	0.26-0.44	0.13-0.45	-	For more info visit PellaADM.com

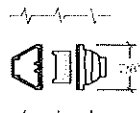
Window sizes available in 1/8" increments

Special sizes available. For more information regarding performance, visit pella.com/performance. For more information regarding frame and installation types, visit PellaADM.com.

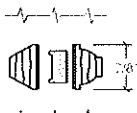
Grilles

Integral Light Technology¹

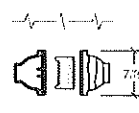
Choose the look of true divided light featuring the industry's only foam spacer.



Putty Glaze Exterior with Ogee Interior¹
7/8", 1-1/4" or 2"



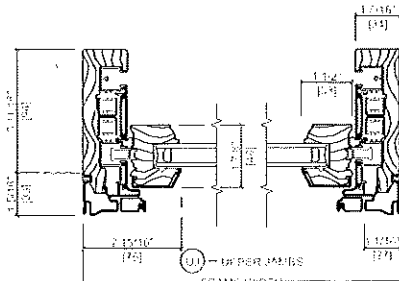
Putty Glaze Exterior with Ogee Interior¹
7/8", 1-1/4" or 2"



Ogee Exterior with Ogee Interior¹
7/8", 1-1/4" or 2"

Cross Sections

Cross Sections



Optional Fold-out Installation Fin

The double-hung cross sections provide visual reference to the historic putty exterior profile and traditional, beveled Ogee interior that add architectural interest to your project.

¹ See back cover for disclosures.

Window Hardware

Classic Collection

Get a timeless look with authentic styles in classic finishes.



Fold-away Crank
Antiek



Spoon-Style Lock

Finishes:



Champagne

White



Brown



Matte Black



Oil-Rubbed Bronze



Satin Nickel



Satin Brass⁵

Rustic Collection

Create a distinct and charming look with distressed finishes.



Fold-away Crank
Antiek



Spoon-Style Lock

Finishes:



Distressed Bronze



Distressed Nickel

Essential Collection

Select from popular designs and finishes to suit every style.



Fold-away Crank



Cam-Action Lock

Finishes:



Champagne

White



Brown



Matte Black



Oil-Rubbed Bronze



Satin Nickel



Satin Brass⁵

Patio Door Hardware

Classic Collection

Choose timeless pieces, created in collaboration with Baldwin® Hardware, for a look that will never go out of style.

BALDWIN®



Hinged & Bifold Patio Door Handle
Virago



Sliding & Multi-Slide Patio Door Handle
Ambrose



Multi-Slide Patio Door Handle^{6,7}

Finishes:



Matte Black



Oil-Rubbed Bronze



Satin Nickel



Satin Brass⁵

Essential Collection

Elevate your style and transform a home with elegant selections.



Hinged & Bifold Patio Door Handle



Sliding Patio Door Handle



Multi-Slide Patio Door Handle^{6,7}

Finishes:



Champagne

White



Brown



Matte Black



Oil-Rubbed Bronze



Satin Nickel



Satin Brass⁵

Colors

Wood Types

Choose the wood species that best complements your project's interior.



Pine

Douglas Fir

Mahogany

Custom solutions:



White Oak

Red Oak

Cherry

Maple

Prefinished Pine Interior Colors

Custom interior finishes, unfinished or primed and ready-to-paint are also available.



White

Bright White

Linen White

Artisan Greige

Natural Stain

Wheat Stain

Golden Oak Stain

Early American Stain

Provincial Stain

Dark Mahogany Stain

Red Mahogany Stain

Espresso Stain

Skyline Gray Stain

Charcoal Stain

Black Stain

Extruded Aluminum-Clad Exterior Colors

Our low-maintenance EnduraClad® exterior finish resists fading. Take durability one step further with EnduraClad Plus which also resists chalking and corrosion.⁸



Black

White

Brown

Fossil

Iron Ore

Portobello

Putty

Almond

Classic White

Brick Red

Hartford Green

Pearl Gray

Soft Linen

Satin Steel

Matte Gray

Wolf Gray

Spice Red

Sage

Frost Blue

Blue Ash



Custom colors are also available.

Added Peace of Mind

Integrated Security Sensors

Integrated wireless security sensors maintain aesthetics, streamline security installation and ensure no warranty loss is caused by post-installation drilling. Sensors can be monitored via the free Pella® Insynctive® App and are compatible with major security panel systems.⁹ For more information, go to connectpella.com.



The Best Limited Lifetime Warranty in the Industry

We know your reputation matters and you stake your reputation on quality, dependable products. That's why we have the best limited lifetime warranty in the industry for wood windows and patio doors.²

¹ Some Pella products may not meet ENERGY STAR® guidelines in Canada. For more information, contact your local Pella sales representative or go to energystar.gc.ca.

² Based on comparing written limited warranties of leading national wood window and wood patio door brands. See written limited warranty for details, including exceptions and limitations, at pella.com/warranty or contact Pella Customer Service.

³ Ratings are contingent on product configurations.

⁴ Color-matched to your product's interior and exterior color.

⁵ Available Fall 2021.

⁶ Flush multi-slide handle is a Pella exclusive design.

⁷ Flush multi-slide handle is not available in Champagne.

⁸ EnduraClad Plus protective finish is not available with all colors. See your local Pella sales representative for availability.

⁹ Requires the Insynctive App on a smart device, an Insynctive Bridge and a wireless home router with internet connection.



This drawing is copyrighted. Unauthorized use is prohibited.

RENDERING

1 NTS

Ed Wojcik
architect, ltd
One Richmond Square
Providence, RI 02906
401-861-7139

Schematic Design for:
9 Stimson Avenue

9 Stimson Avenue
Providence, RI 02906

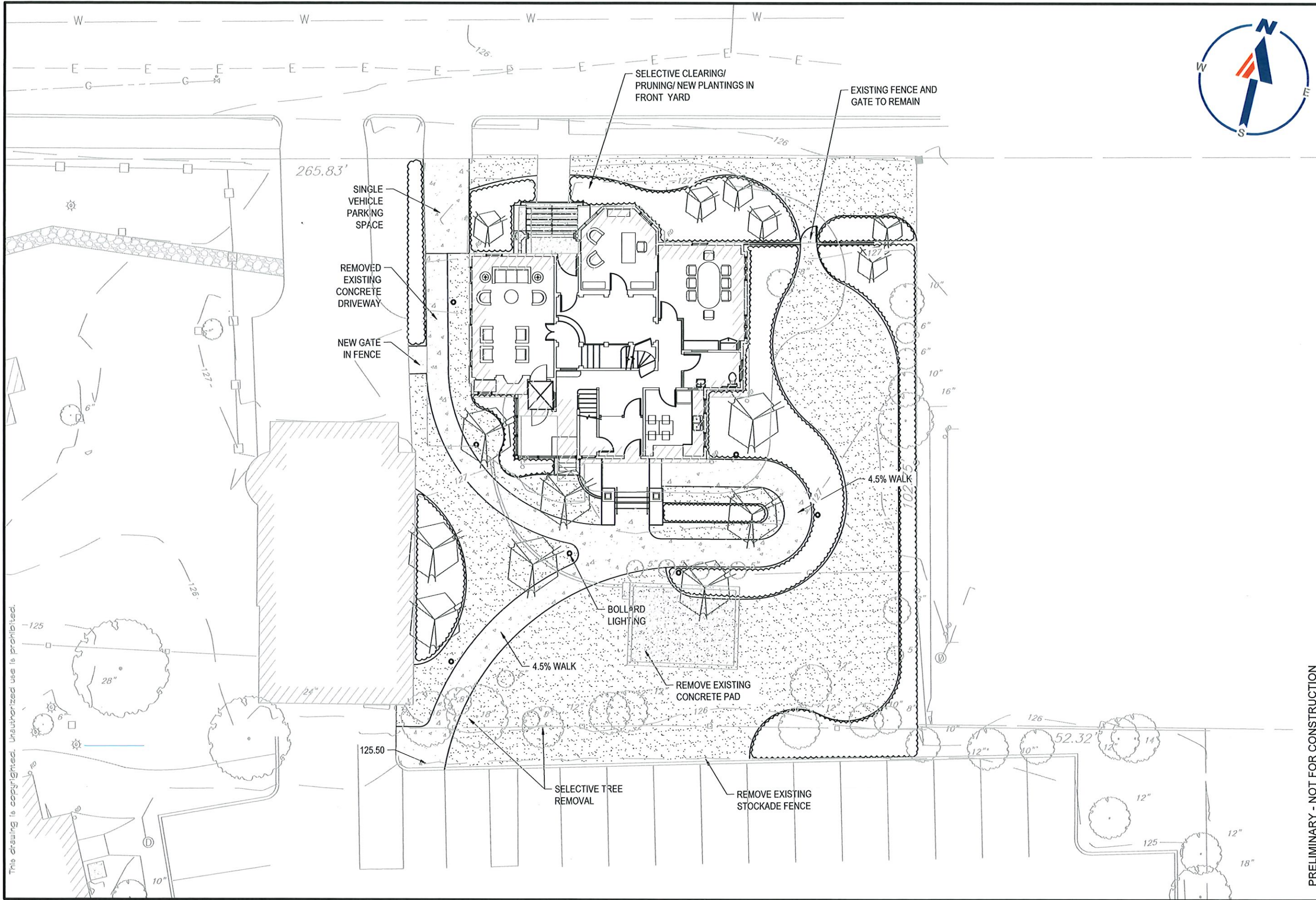
PRELIMINARY - NOT FOR CONSTRUCTION

SHEET CONTENTS:
Rendering

PROJECT # 6218

DATE: 6/8/2021
REVISED DATE:

A-1.0



This drawing is copyrighted. Unauthorized use is prohibited.

Ed Wojcik
architect, ltd
 One Richmond Square
 Providence, RI 02906
 401-861-7139

Schematic Design for:
9 Stimson Avenue
 9 Stimson Avenue
 Providence, RI 02906

PRELIMINARY - NOT FOR CONSTRUCTION

LANDSCAPE
 CONCEPT PLAN
 SCALE: 1" = 16'
 PROJECT # 6218
 DATE: 6/8/2021
 REVISED DATE:

This drawing is copyrighted. Unauthorized use is prohibited.



NORTH ELEVATION
EXISTING - ORIGINAL WINDOWS

1 1/8" = 1'-0"



NORTH ELEVATION
PROPOSED - NEW WINDOWS

2 1/8" = 1'-0"

EXHIBIT 3B

PRELIMINARY - NOT FOR CONSTRUCTION

Schematic Design for:
9 Stimson Avenue

9 Stimson Avenue
Providence, RI 02906

SHEET CONTENTS:
Existing and Proposed
North Elevations

PROJECT # 6218

DATE: 6/8/2021
REVISED DATE:

A-2.0

Ed Wojcik
architect, ltd.
One Richmond Square
Providence, RI 02906
401-861-7139

This drawing is copyrighted. Unauthorized use is prohibited.



EXHIBIT 3B

Ed Wojcik
architect, ltd
One Richmond Square
Providence, RI 02906
401-861-7139

Schematic Design for:
9 Stimson Avenue
9 Stimson Avenue
Providence, RI 02906

SHEET CONTENTS:
Existing and Proposed
West Elevations

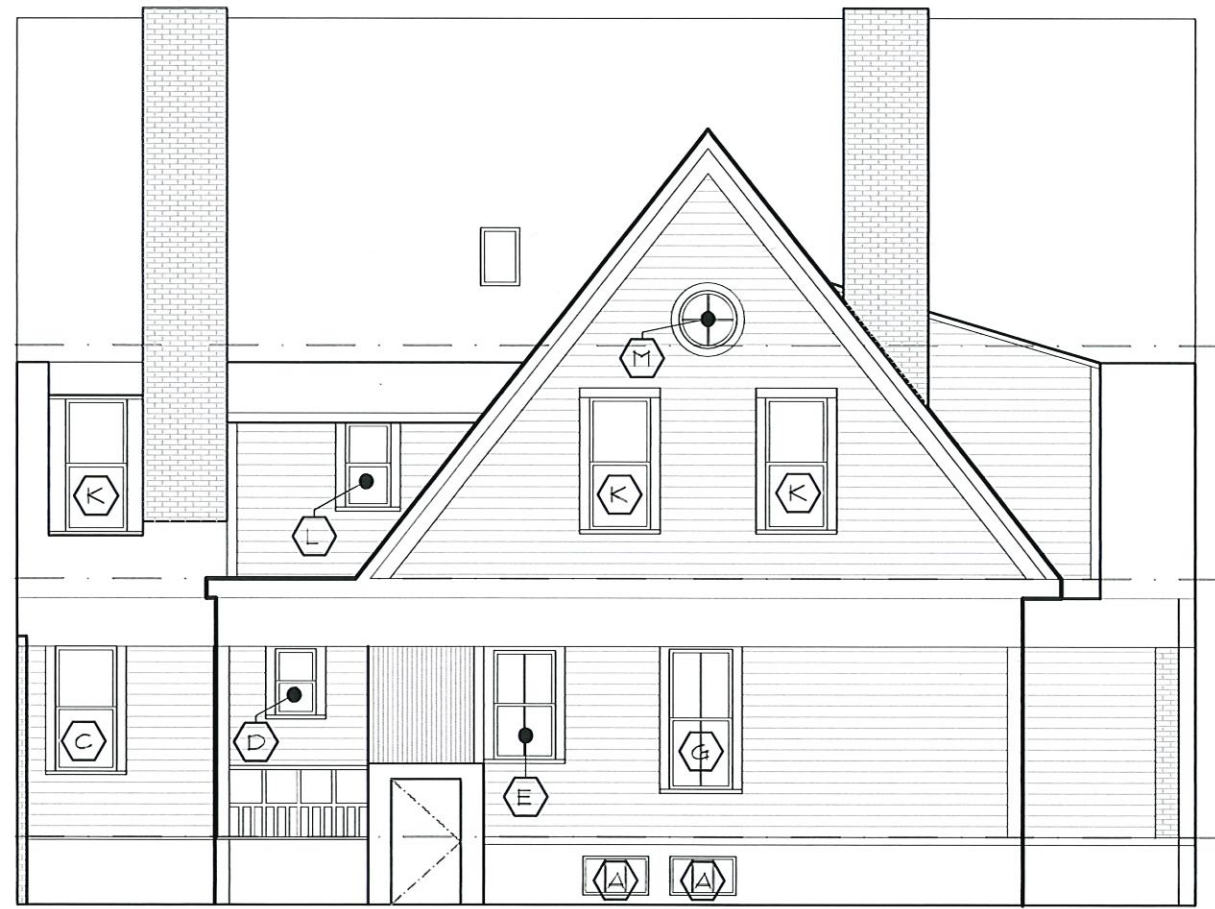
PROJECT # 6218

DATE: 6/8/2021
REVISED DATE:

PRELIMINARY - NOT FOR CONSTRUCTION

A-2.1

This drawing is copyrighted. Unauthorized use is prohibited.



SOUTH ELEVATION
EXISTING - ORIGINAL WINDOWS

1 1/8" = 1'-0"



SOUTH ELEVATION
PROPOSED - NEW WINDOWS

2 1/8" = 1'-0"

EXHIBIT 3B

PRELIMINARY - NOT FOR CONSTRUCTION

Schematic Design for:
9 Stimson Avenue

9 Stimson Avenue
Providence, RI 02906

SHEET CONTENTS:
Existing and Proposed
South Elevations

PROJECT # 6218

DATE: 6/8/2021
REVISED DATE:

A-2.2

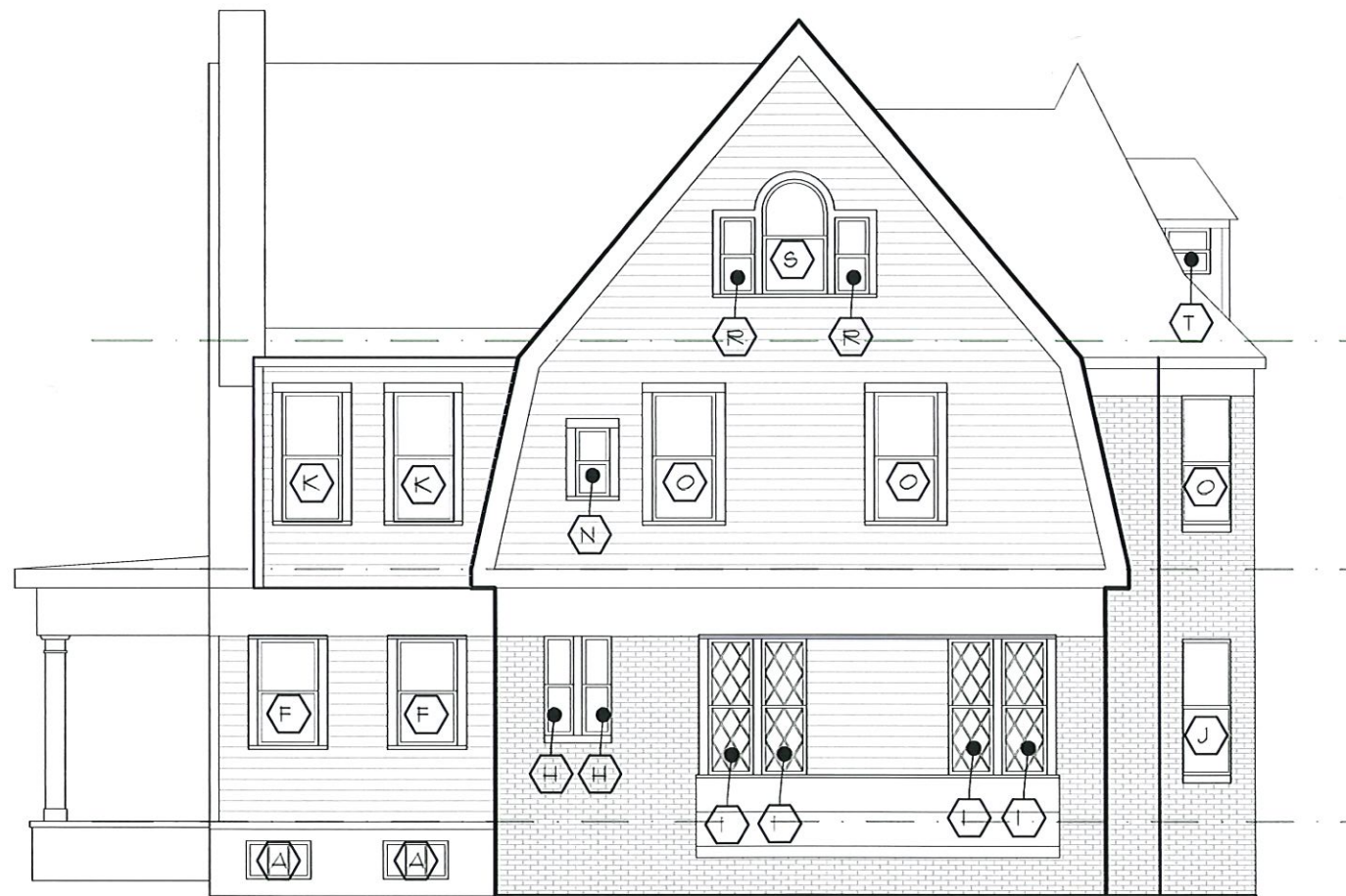
Ed Wojcik
architect, ltd
One Richmond Square
Providence, RI 02906
401-861-7139

This drawing is copyrighted. Unauthorized use is prohibited.



EAST ELEVATION
EXISTING - ORIGINAL WINDOWS

1 1/8" = 1'-0"



EAST ELEVATION
PROPOSED - NEW WINDOWS

2 1/8" = 1'-0"

EXHIBIT 3B

Ed Wojcik
architect, ltd
One Richmond Square
Providence, RI 02906
401-861-7139

Schematic Design for:
9 Stimson Avenue

9 Stimson Avenue
Providence, RI 02906

SHEET CONTENTS:
Existing and Proposed
East Elevations

PROJECT # 6218

DATE: 6/8/2021
REVISED DATE:

PRELIMINARY - NOT FOR CONSTRUCTION

A-2.3