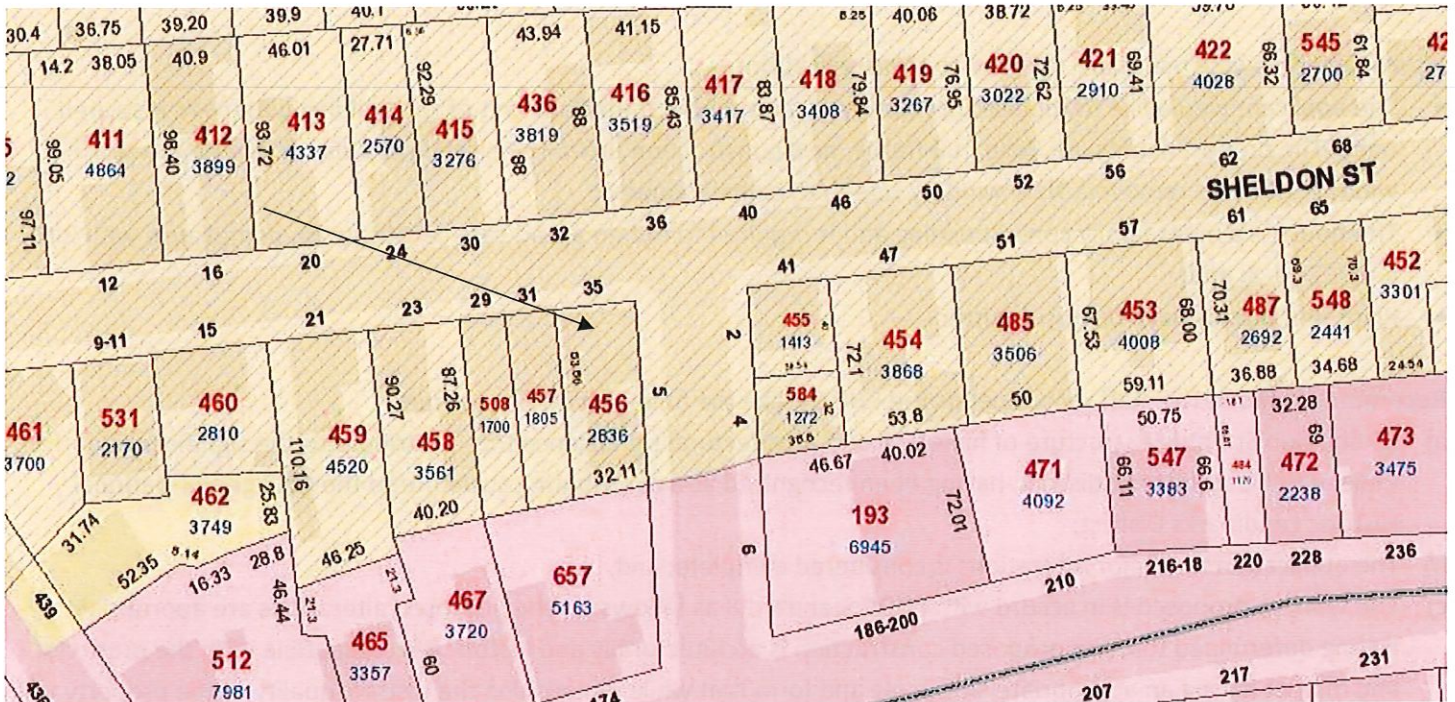


PROJECT REVIEW

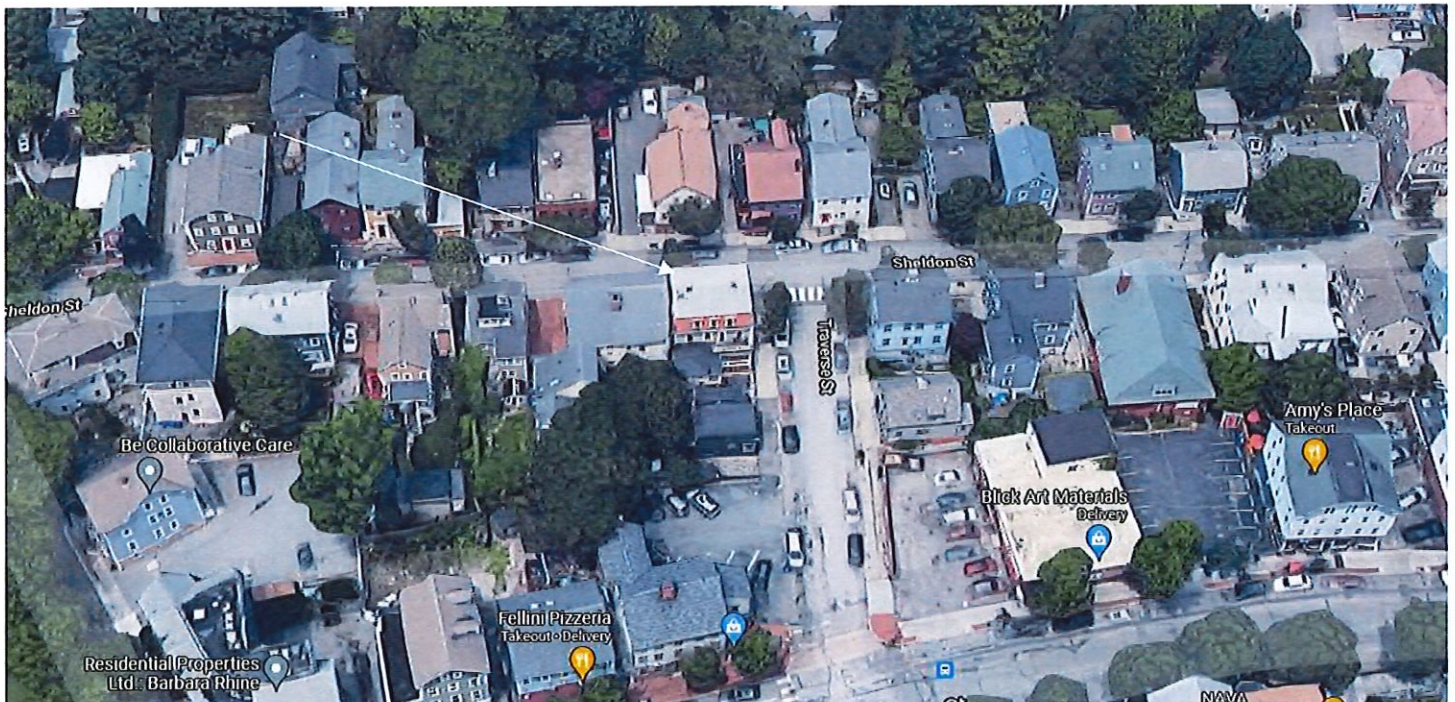
1. CASE 21.099, 35 SHELDON STREET, Charles A. Lake House, 1870s (COLLEGE HILL)

Vernacular Italianate. 2½ story, clapboarded, mansard-roof house, three-bays wide with a center entry under a heavy hood on brackets with a bracketed cornice.

CONTRIBUTING

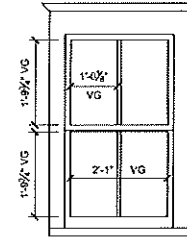
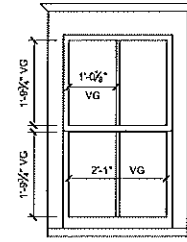
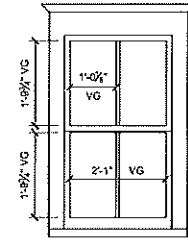
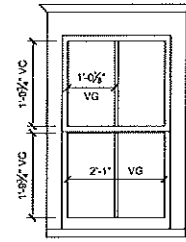
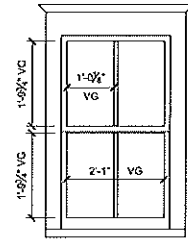
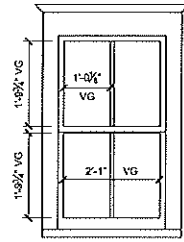


Arrow indicates 35 Sheldon Street.

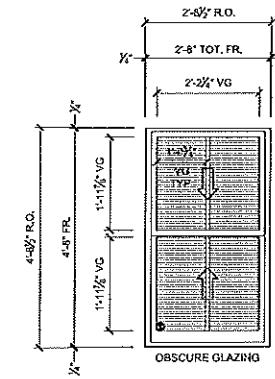
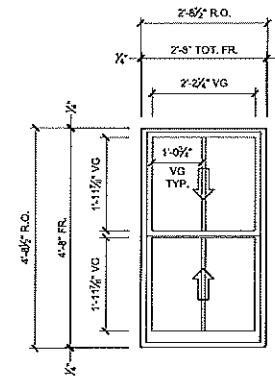
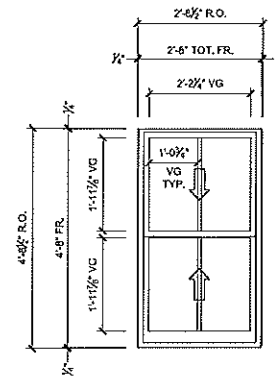
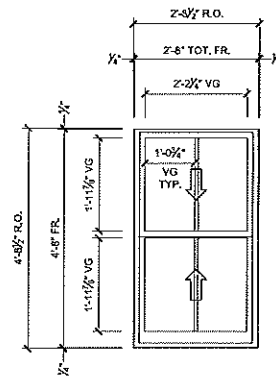
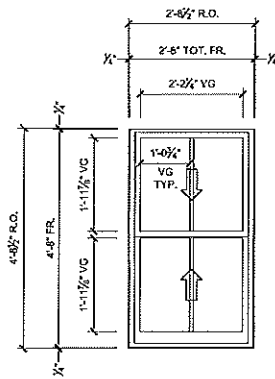
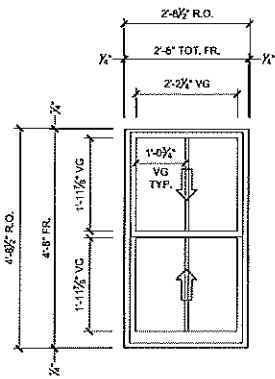


Arrow indicates project location, looking north.

EXISTING



PROPOSED



Kitchen 2
LINE # 10 QTY

Living Room 2
LINE # 15 QTY

Bedroom 2
LINE # 20 QTY

Closet 1
LINE # 25 QTY

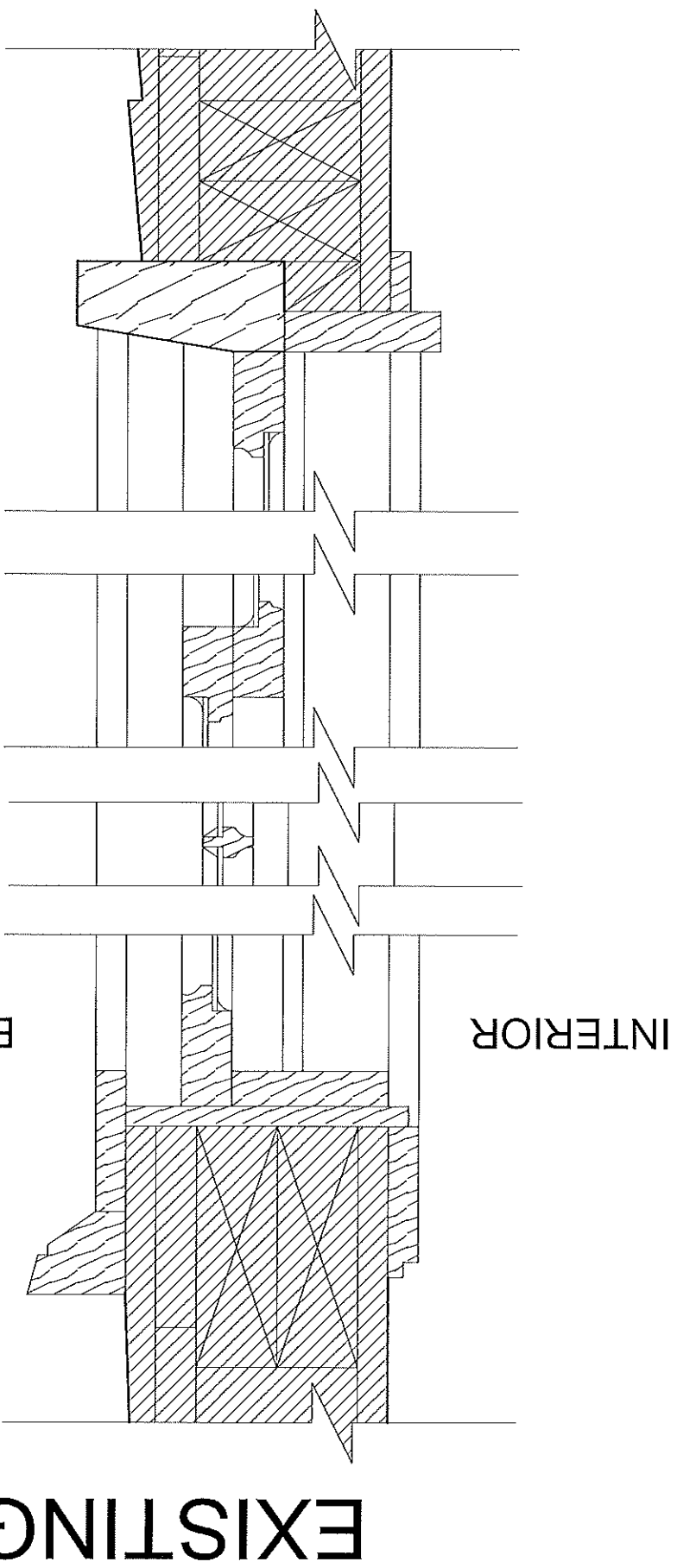
Office 2
LINE # 30 QTY

Bathroom 1
LINE # 35 QTY

REV	DATE	BY	CHK
1			
2			
3			
4			
5			

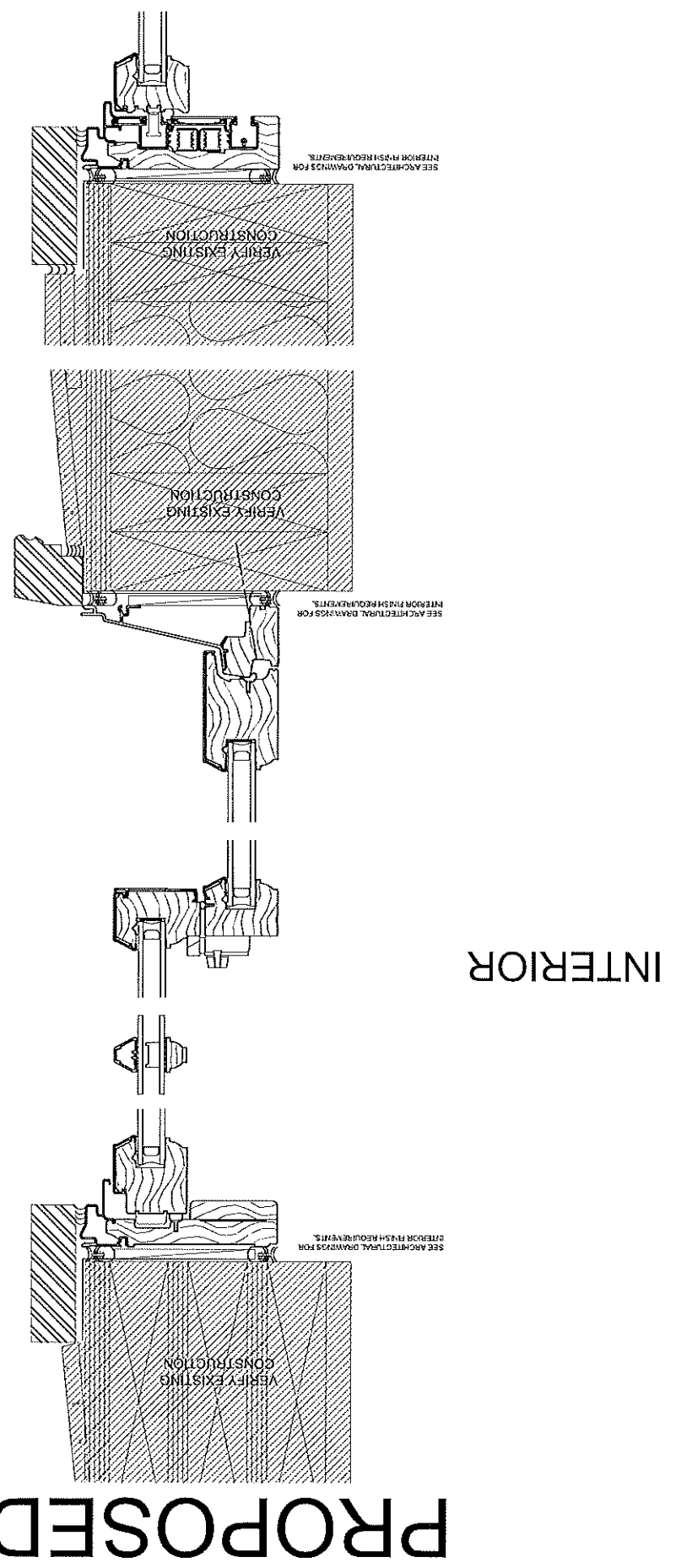
PRELIMINARY DRAWING FOR
85 Power St.
 LOCATION: PROVIDENCE, RI
 ARCHITECT: —

ORIGINAL: 9-25-21
 DRAWN BY: TJT
 Project No:
 14349128
 SHEET:
 1 of 2



EXTERIOR

INTERIOR



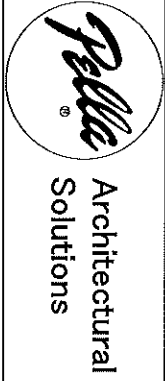
INTERIOR

EXTERIOR

PRELIMINARY DRAWING FOR
35 Sheldon St.
 LOCATION: Providence, RI
 ARCHITECT: ...

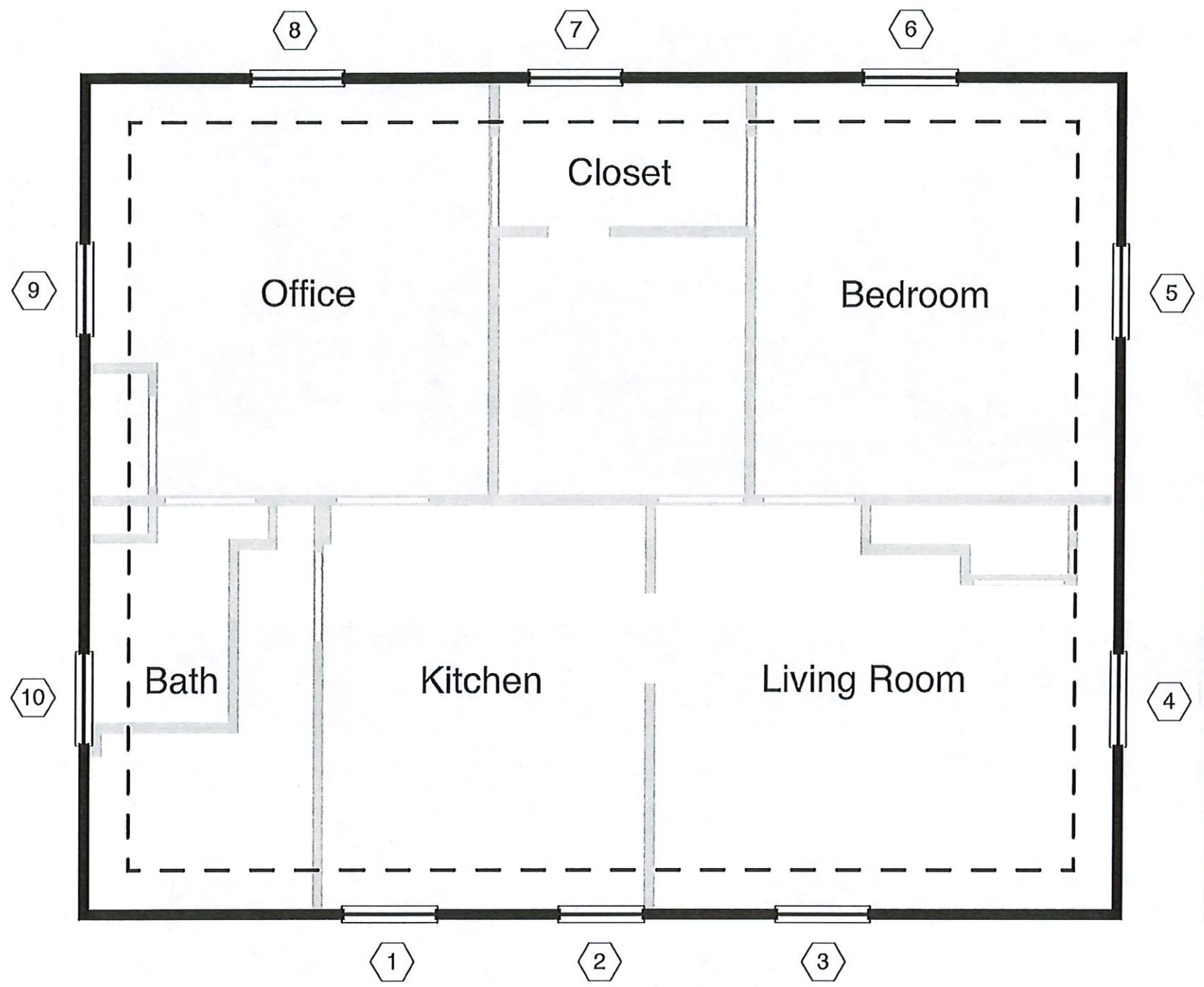
PROJECT NO.: 14349128
 SHEET: 2 of 2

REV.	DATE	REV.	DATE
Δ	-	Δ	-
Δ	-	Δ	-
Δ	-	Δ	-
Δ	-	Δ	-
Δ	-	Δ	-
Δ	-	Δ	-

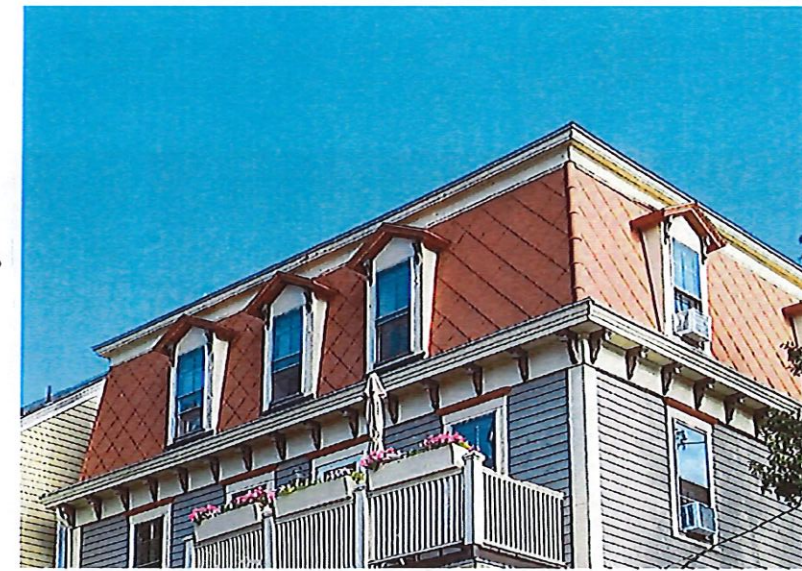




REV:	DATE:	REV:	DATE:	REV:	DATE:	REV:	DATE:
1		2		3		4	



1/2" = 1'



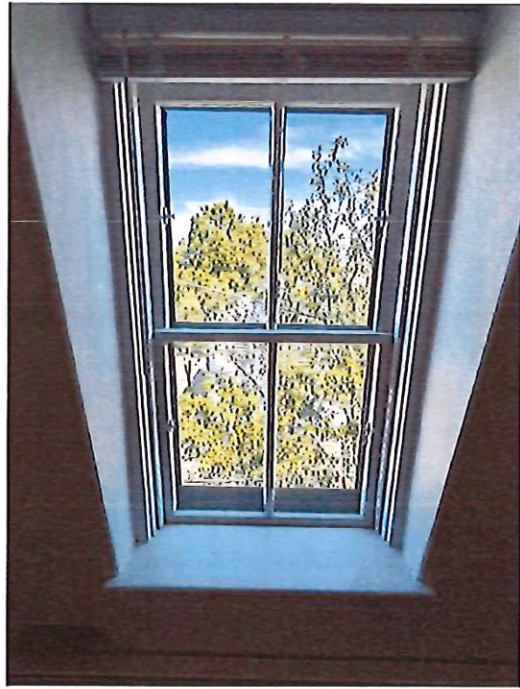
Existing View SW

PRELIMINARY DRAWING FOR
35 Sheldon St.
 LOCATION: Providence, RI
 ARCHITECT: —

ORIGIN: 03-20-2011
 DRAWN BY: TJT

Project No:
14288496

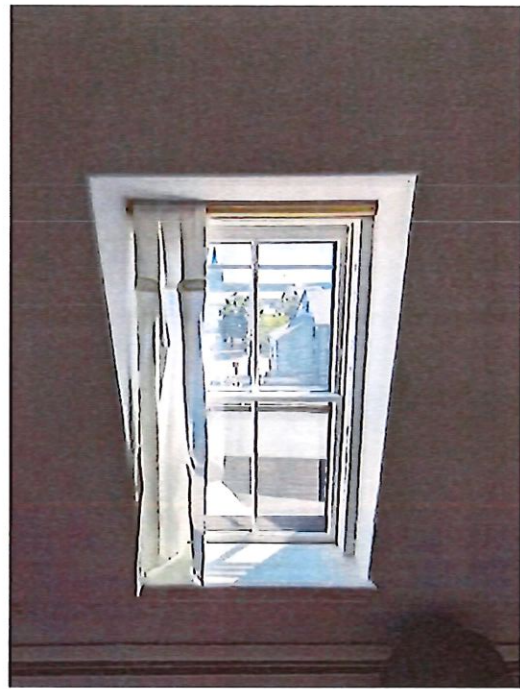
SHEET:
3 of 5



5



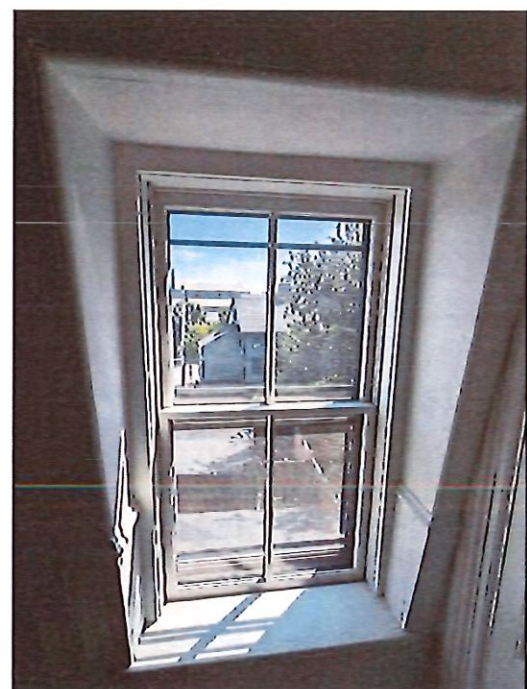
4



3



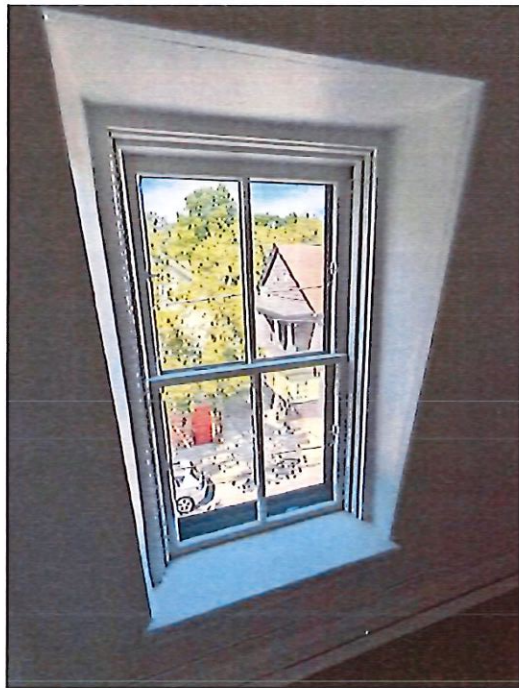
2



1



6



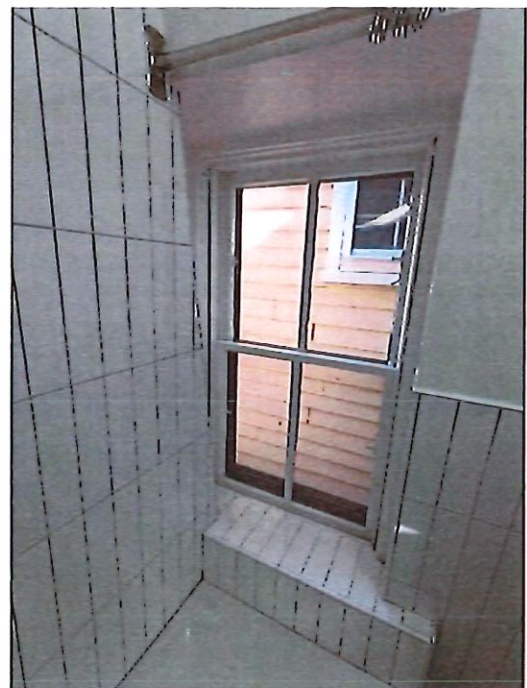
7



8



9

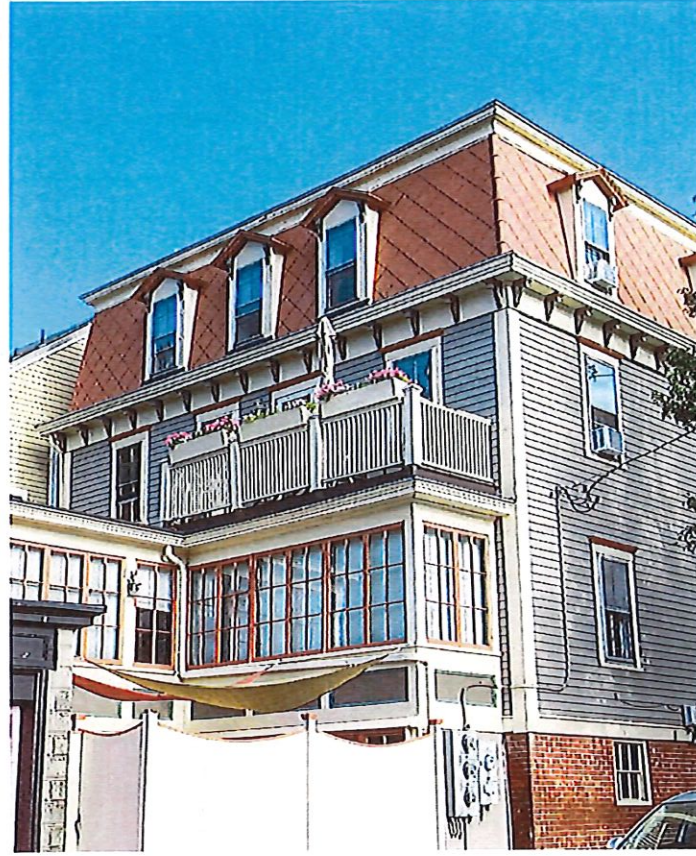


10

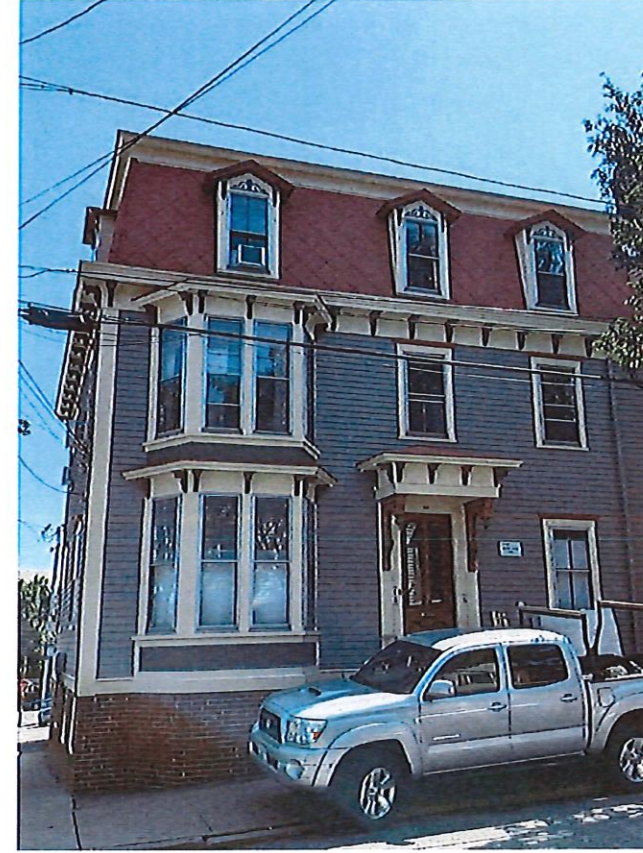
REV	DATE	REV	DATE
△	.	△	.
△	.	△	.
△	.	△	.
△	.	△	.

PRELIMINARY DRAWING FOR
35 Sheldon St.
LOCATION: Providence, RI
ARCHITECT: —

ORIGINAL: 03332311
DRAWN BY: TJT
Project No:
14288496
SHEET:
4 of 5



Existing View Traverse Street



Existing View Sheldon Street



REV.	DATE	BY	CHK