

2022 NEIGHBORHOOD GREENWAYS

Department of Planning and Development

June 8, 2022



MAYOR JORGE O. ELORZA
CITY OF PROVIDENCE



VIRTUAL MEETING PROCEDURE

- Presentation is being recorded and will be posted to project website at: <https://www.providenceri.gov/planning/great-streets/>
- Chat window available for questions or help
- Questions and comments may be submitted using the Q&A button on the bottom panel of your Zoom screen and will be addressed during public Q&A
- Participants may be removed for inappropriate behavior

Bottom Panel of
Zoom Screen

Ask a
Question



Raise Hand



Q&A



Closed Caption

AGENDA

- Introduction of project team
- Overview of project background and community engagement
- Project details and schedule
- Q+A



PROJECT TEAM

- Alex Ellis, Principal Planner, City of Providence Department of Planning and Development
- Martina Haggerty, Director of Special Projects, City of Providence Department of Planning and Development
- McMahon Associates



WHAT'S NOT INCLUDED?

- × Parking removal
- × Travel lane removal
- × Sidewalk & curb modifications
- × Separated bike facilities



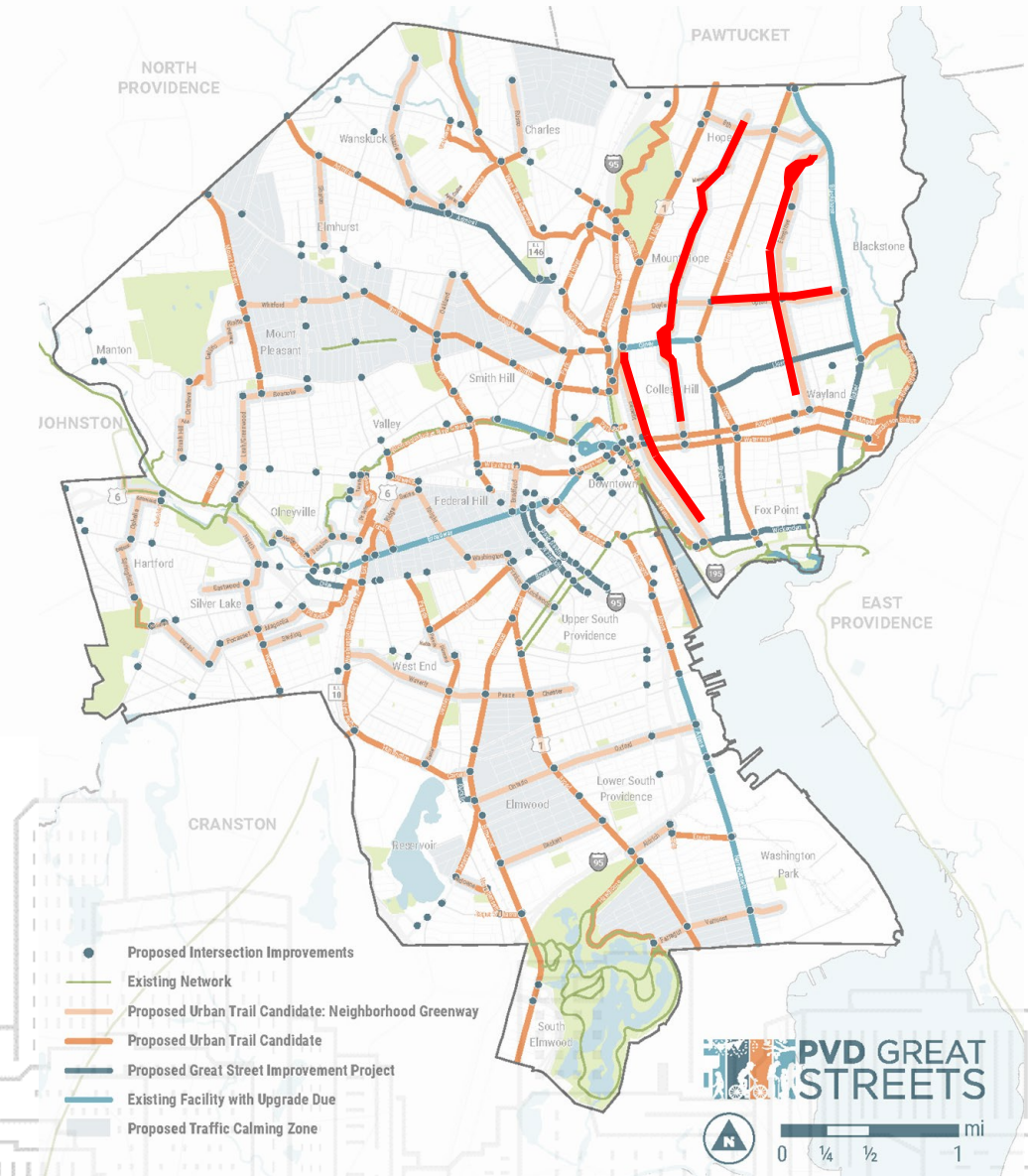
PROJECT BACKGROUND

- PVD Great Streets Plan (2020)
providenceri.gov/planning/great-streets
- East Side Community Workshops
 - March 11, 2019 and March 20, 2019
- Neighborhood Greenway Info Session
 - June 11, 2021
- Online Map
 - 275 comments



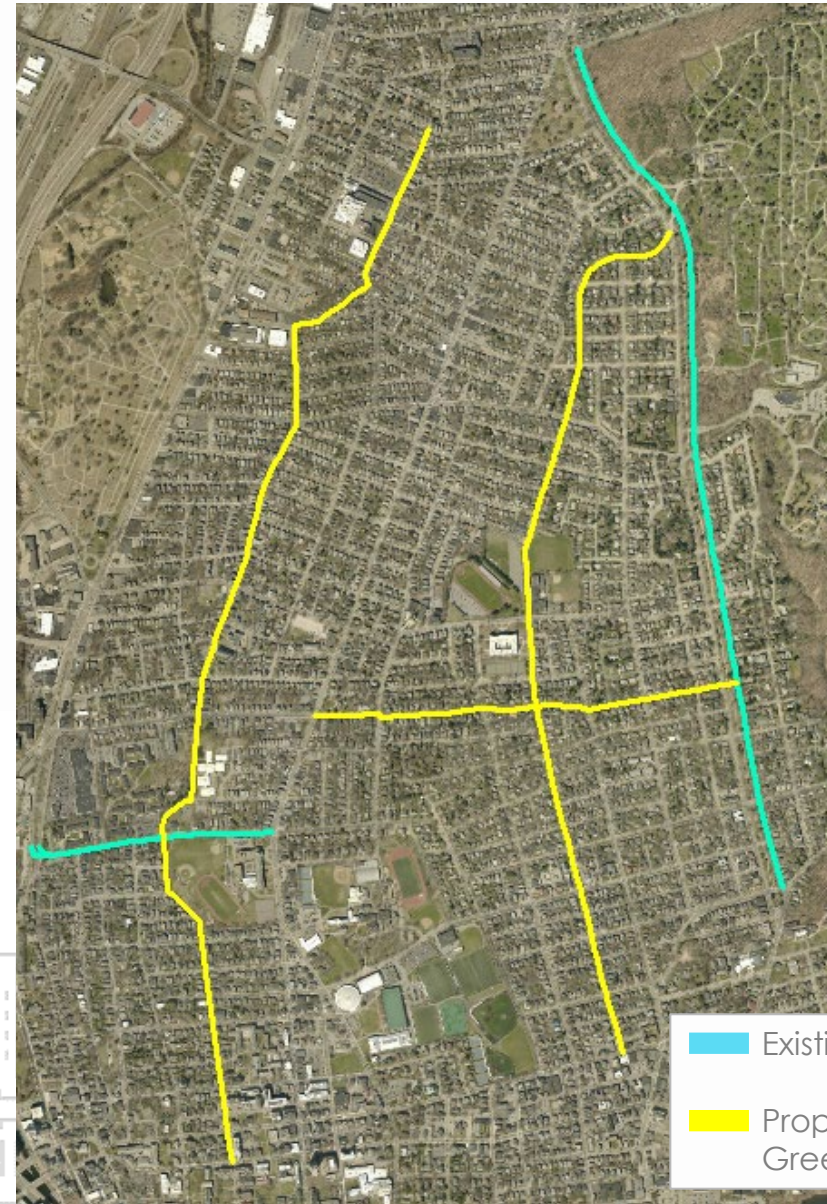
PROJECT CORRIDORS

- Benefit Street
- Doyle Avenue-Upton Avenue
- Elmgrove Avenue
- Summit Avenue-Creston Way-Memorial Road-Camp Street-Brown Street



WHY THESE STREETS?

- Creating a cohesive network of low stress, local streets
- Will safely connect East Side neighborhoods to:
 - Wayland Square
 - Wickenden Street
 - University Heights
 - Several K-8 schools & community centers
 - Brown and RISD
 - Miriam Hospital
 - Mt. Hope
 - Neighborhood parks
 - Blackstone Boulevard
- **Strengthen north-south and east-west connections**



WHAT ARE “URBAN TRAILS”?

- More than just bike lanes
- The Urban Trail Network is a series of investments that will connect schools, parks, jobs, businesses, libraries, and cultural institutions **citywide**
- Safe places for people of **all ages and abilities** to walk, run, bike, scoot, and skate



WHAT ARE “URBAN TRAILS”?

- Three types of urban trails:

Off road shared use paths

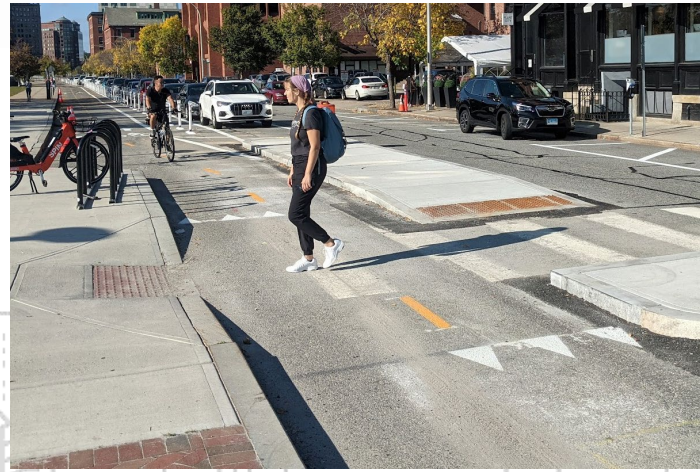
(examples: East Bay Bike Path, Blackstone Bike Path)



Explore RI

Separated or protected places for biking, running, skating on major roads

(examples: Olney Street, Empire Street)



Providence Streets Coalition

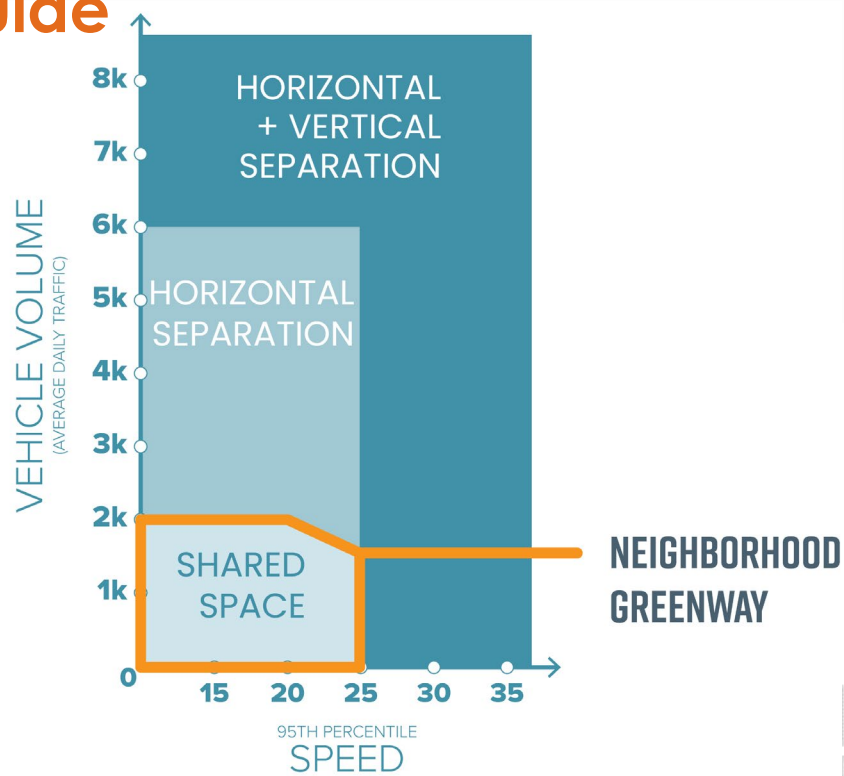
Neighborhood Greenways: low-volume side streets with minor striping, wayfinding signage, and potential traffic calming (examples: Knight, Peace, Ontario, Delaine streets)



www.flickr.com/photos/gregraisman/6847698630/

SPEED & TRAFFIC VOLUME

Facility Selection Guide



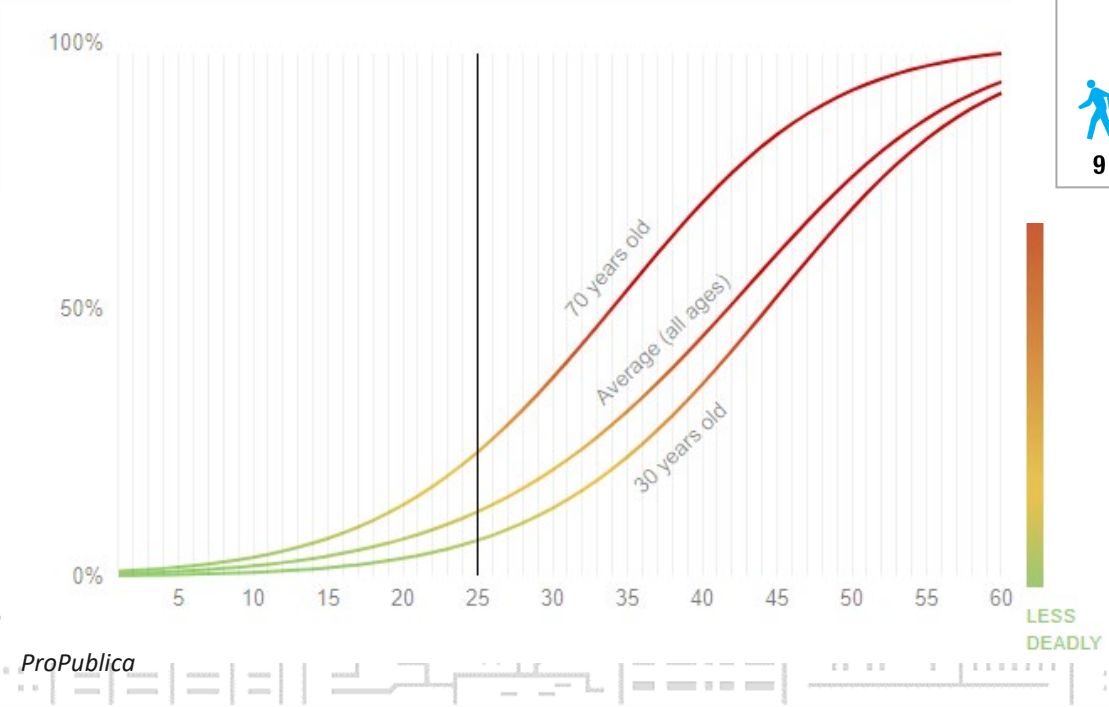
WHAT ARE “URBAN TRAILS”?



WHY THESE STREETS?

- City considered safety, connectivity, access, and equity to determine which streets should move forward first:
 - Safety: Are there documented safety concerns such as cars speeding or crashes involving people walking or biking?
 - Connectivity: Does the street connect to an existing or funded Urban Trail segment?
 - Access: Does the street provide access to important destinations such as schools, jobs, parks, libraries, cultural institutions, local businesses
 - Equity: We must invest in our neighborhoods equitably to overcome injustices that have harmed communities of color with past unhealthy transportation decisions

SAFETY



HIT BY A VEHICLE
TRAVELING AT:

**15
MPH**



9 out of 10 pedestrians walk away

HIT BY A VEHICLE
TRAVELING AT:


**30
MPH**



5 out of 10 pedestrians walk away

HIT BY A VEHICLE
TRAVELING AT:

**40
MPH**

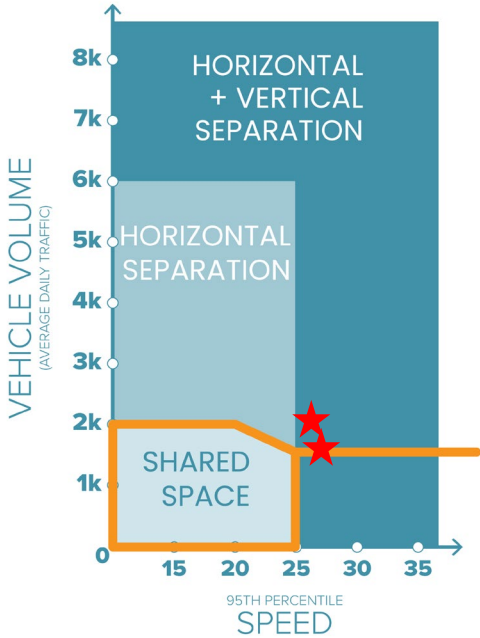


Only 1 out of 10 pedestrians walks away



ELMGROVE

BLACKSTONE | ANGELL



Location	Speeds		Volumes	
	NB 95th	SB 95th	NB	SB
Elmgrove at Lloyd	26 mph	26 mph	1,100 veh	1,100 veh
Elmgrove at Rochambeau	25 mph	27 mph	900 veh	900 veh

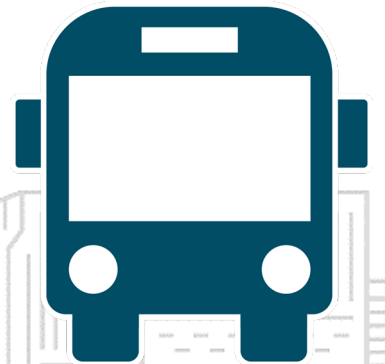
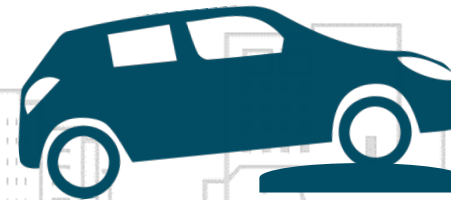
Data collected in March 2022



ELMGROVE

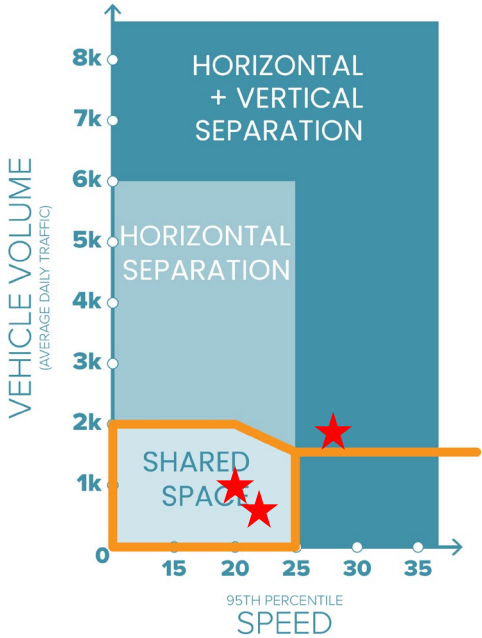
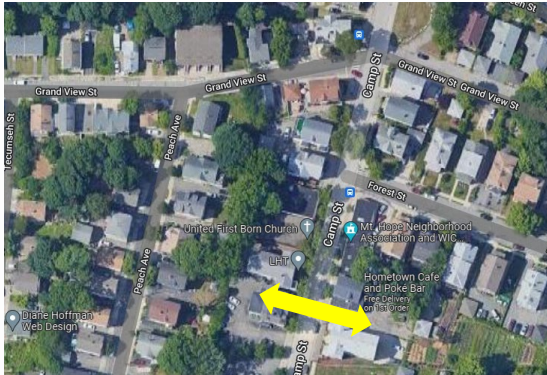
SESSIONS | SAVOY

- Shared Lane Markings
- Improved Striping
- Painted Curb Extensions
- Traffic Calming
- Defined Bus Stop



CAMP/SUMMIT

WATERMAN | TENTH



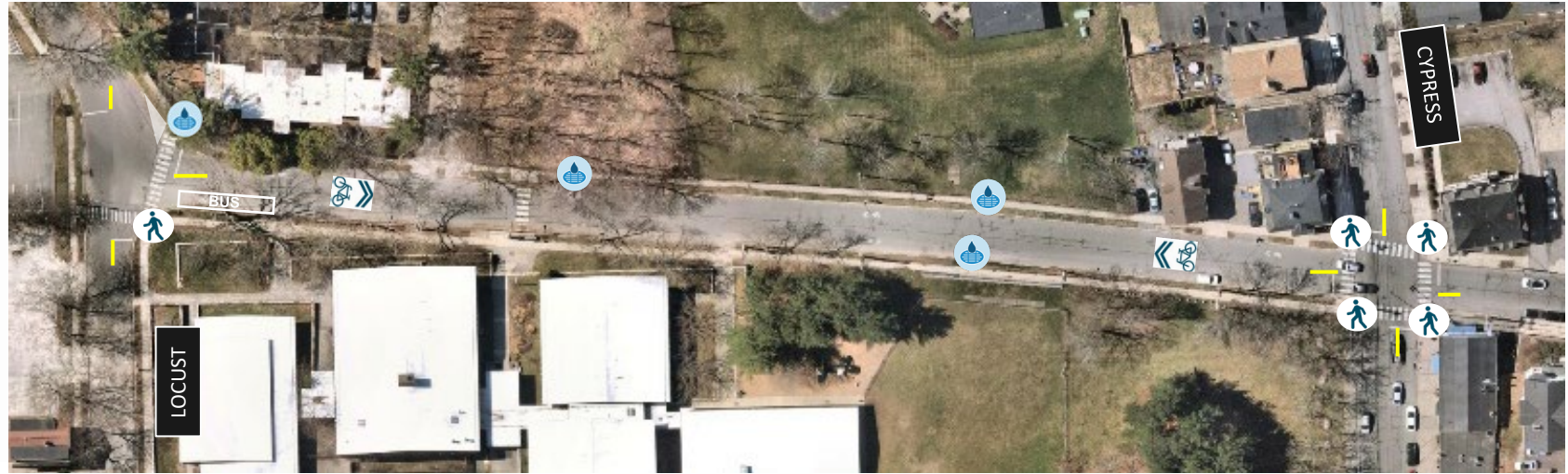
Location	Speeds		Volumes	
	NB 95th	SB 95th	NB	SB
Camp at Forest	28 mph	28 mph	900 veh	1,000 veh
Summit at 5 th	21 mph	20 mph	500 veh	500 veh
Brown at Barnes	23 mph	24 mph	100 veh	500 veh

Data collected in March 2022

CAMP

LOCUST | CYPRESS

- Shared Lane Markings
- Improved Striping
- Painted Curb Extensions
- Bike-Friendly Drainage Grates
- Defined Bus Stops



DOYLE/UPTON

HOPE | BLACKSTONE

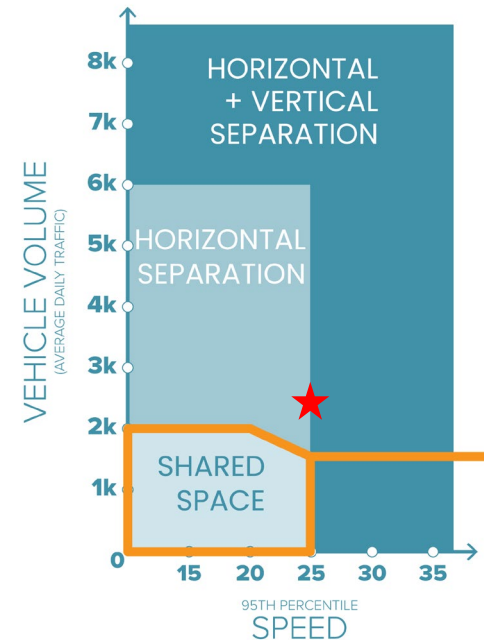


- **Speeds (March 2022)**

- EB 95%: 25 mph
- WB 95% : 25 mph

- **Volumes (March 2022)**

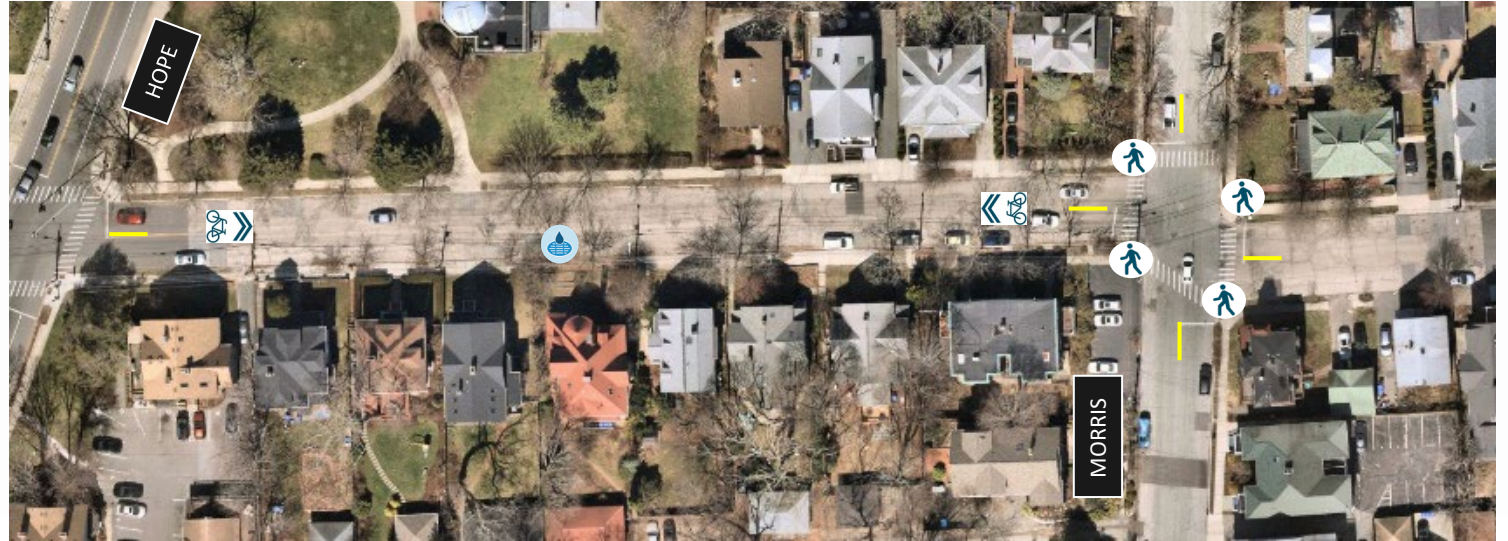
- EB: 1,200 veh/day
- WB: 1,200 veh/day



DOYLE

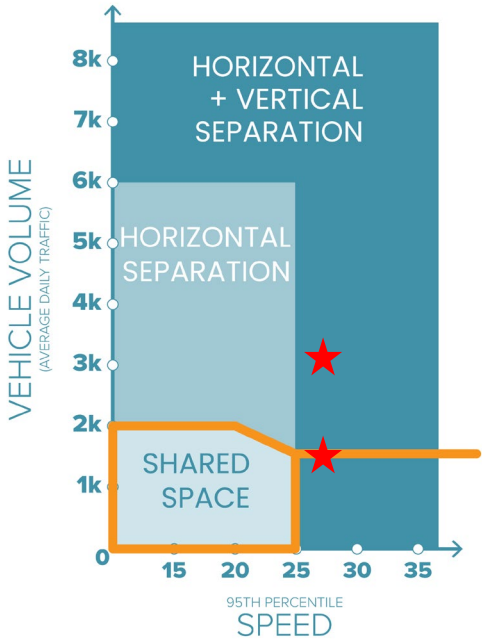
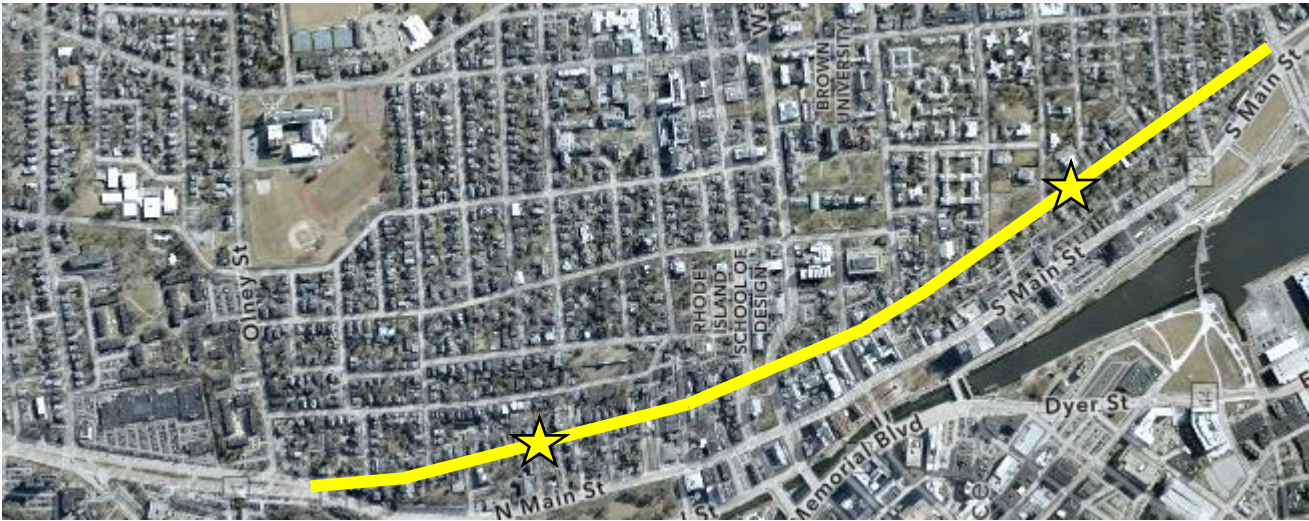
HOPE | MORRIS

- Shared Lane Markings
- Improved Striping
- Bike-Friendly Drainage Grates
- Painted Curb Extensions



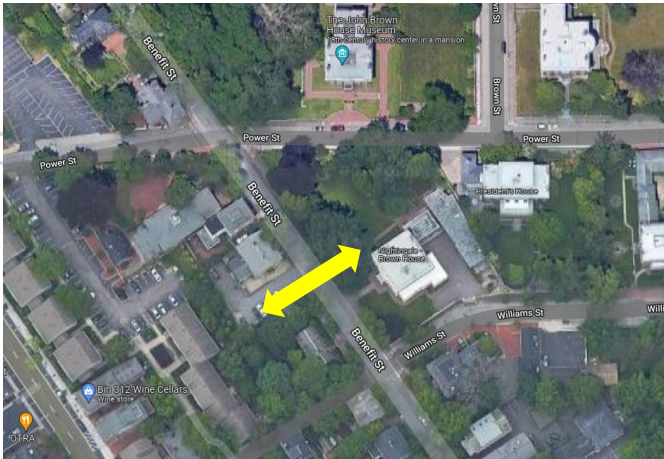
BENEFIT

WICKENDEN | NORTH MAIN



Location	Speeds		Volumes	
	NB 95th	SB 95th	NB	SB
Benefit at Church	27 mph	28 mph	1,100 veh	500 veh
Benefit at Power	26 mph	28 mph	1,600 veh	1,800 veh

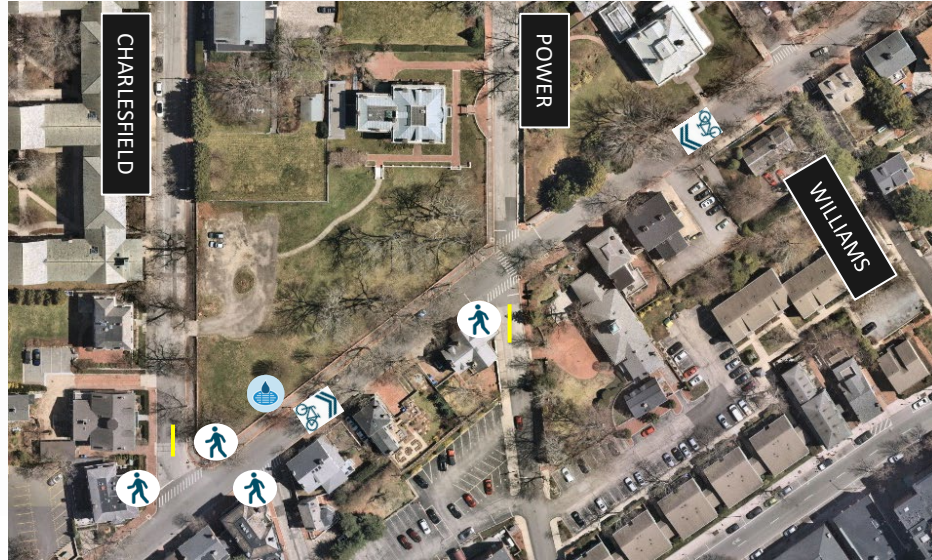
Data collected in March 2022



BENEFIT

WILLIAMS | CHARLESFIELD

- Shared Lane Markings
- Improved Striping
- Traffic Calming
- Painted Curb Extensions
- Bike-Friendly Drainage Grates



BETTER FOR PEOPLE WHO WALK & BIKE



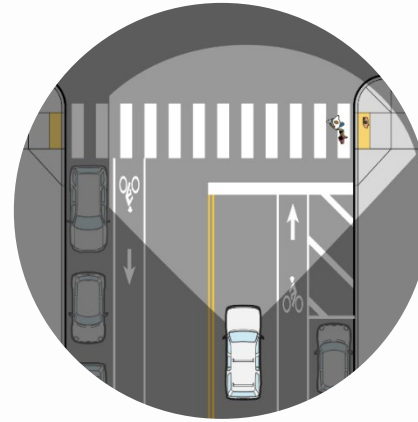
Reduced Speeding

Traffic calming measures will slow down vehicles, making walking and cycling safer and more comfortable experiences



Shared Lane Markings

Sharrows will provide guidance to people cycling on where to ride



Crosswalk Visibility Improvements

Painted curb extensions and repainted crosswalks will increase visibility to drivers and people cycling



New Drainage Grates

Bike-friendly drainage grates will replace those that could catch the wheel of a bicycle

BETTER FOR PEOPLE WITH CARS



Parking

No parking is impacted with this project



Better Visibility of People Walking

Restriped crosswalks and painted curb extensions will make it easier for drivers to see people walking at intersections



More Awareness of People Cycling

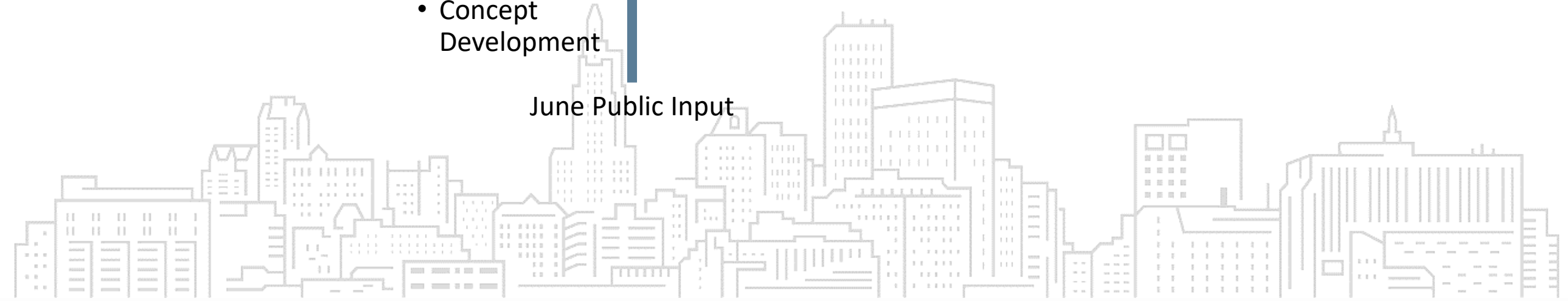
Shared lane markings remind drivers to watch for people cycling

PROJECT SCHEDULE



- Data Collection
- Concept Development
- Final Design
- Construction

June Public Input



FOR MORE INFORMATION

- View this presentation, sign up to receive emails, and read the Great Streets Master Plan:

www.providenceri.gov/planning/great-streets

- Reach the City's project manager now or during construction:

Alex Ellis, aellis@providenceri.gov

401-680-8400 x8522



Q+A PROCEDURE

- Presentation is being recorded and will be posted at:
www.providenceri.gov/planning/great-streets
- Questions and comments may be submitted using the Q&A button on the bottom panel of your Zoom screen
- Participants may be removed for inappropriate behavior

Bottom Panel of
Zoom Screen

Ask a
Question



Raise Hand



Q&A



Closed Caption

THANK YOU

Want to get in touch?

Alex Ellis, aellis@providenceri.gov

401-680-8400 x8522

