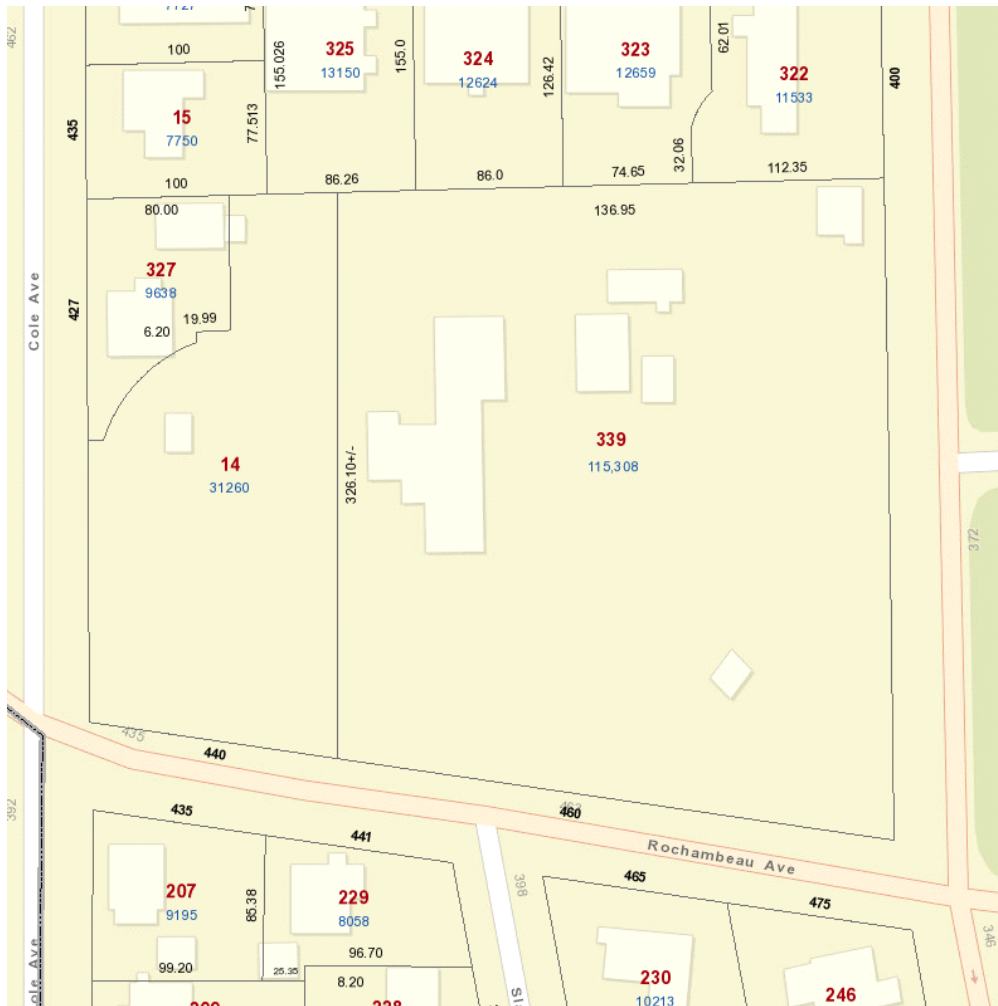


## CHAPTER

No.      **AN ORDINANCE IN AMENDMENT OF CHAPTER 27 OF THE CODE OF ORDINANCES OF THE CITY OF PROVIDENCE, ENTITLED, "THE CITY OF PROVIDENCE ZONING ORDINANCE", APPROVED NOVEMBER 24, 2014, AS AMENDED, TO INCLUDE 440 AND 460 ROCHAMBEAU AVENUE, (PLAT 93, LOTS 14 AND 339), IN THE HISTORIC DISTRICT OVERLAY DISTRICT**

*Be it ordained by the City of Providence:*

SECTION 1: Chapter 27 of the Code of Ordinances of the City of Providence, entitled “The City of Providence Zoning Ordinance” approved November 24, 2014, as amended, is hereby further amended by include 440 and 460 Rochambeau Ave. (Plat 93, Lots 14 and 339) by applying the Historic District Overlay District to, as depicted on the attached map. This property is to be included in the Residential category of the Providence Landmarks District.



Section 2. This Ordinance shall take effect upon passage and publication as prescribed by law.