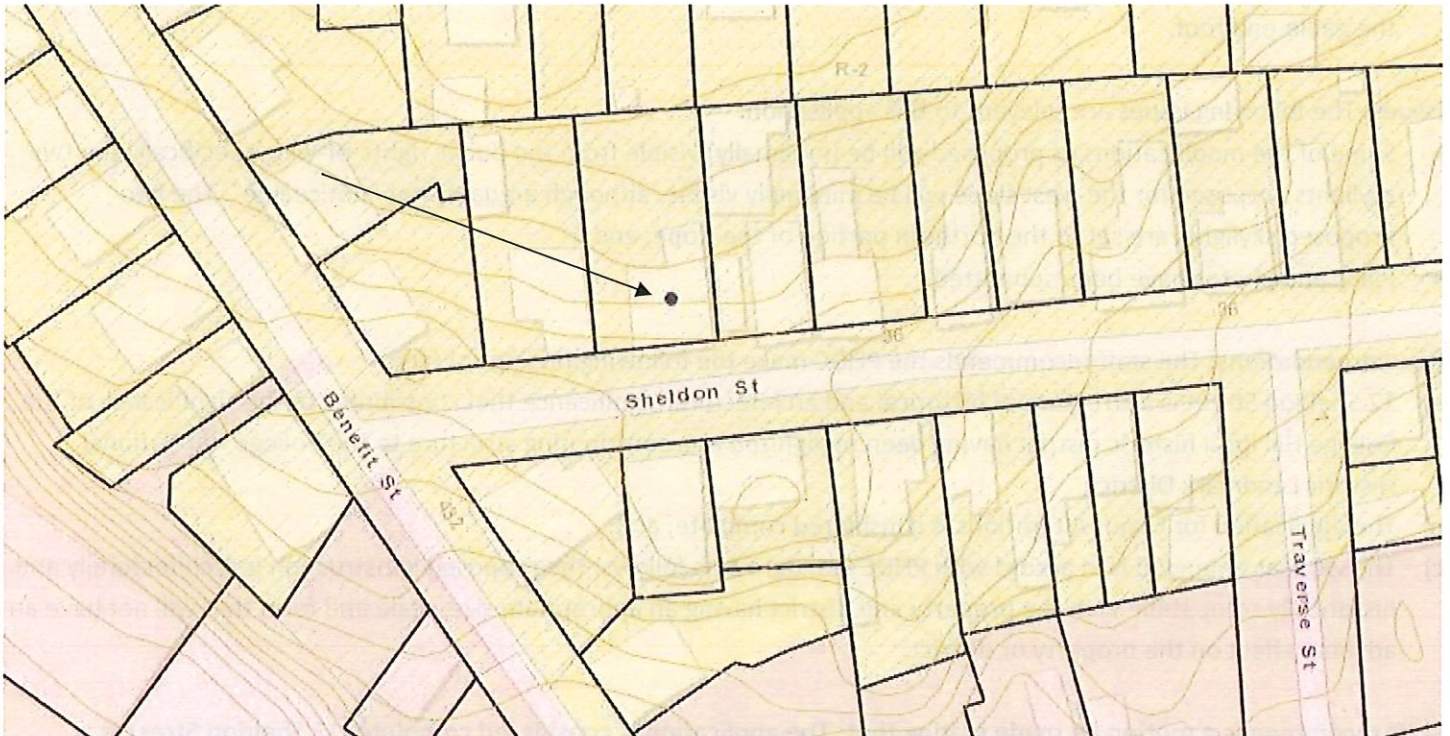


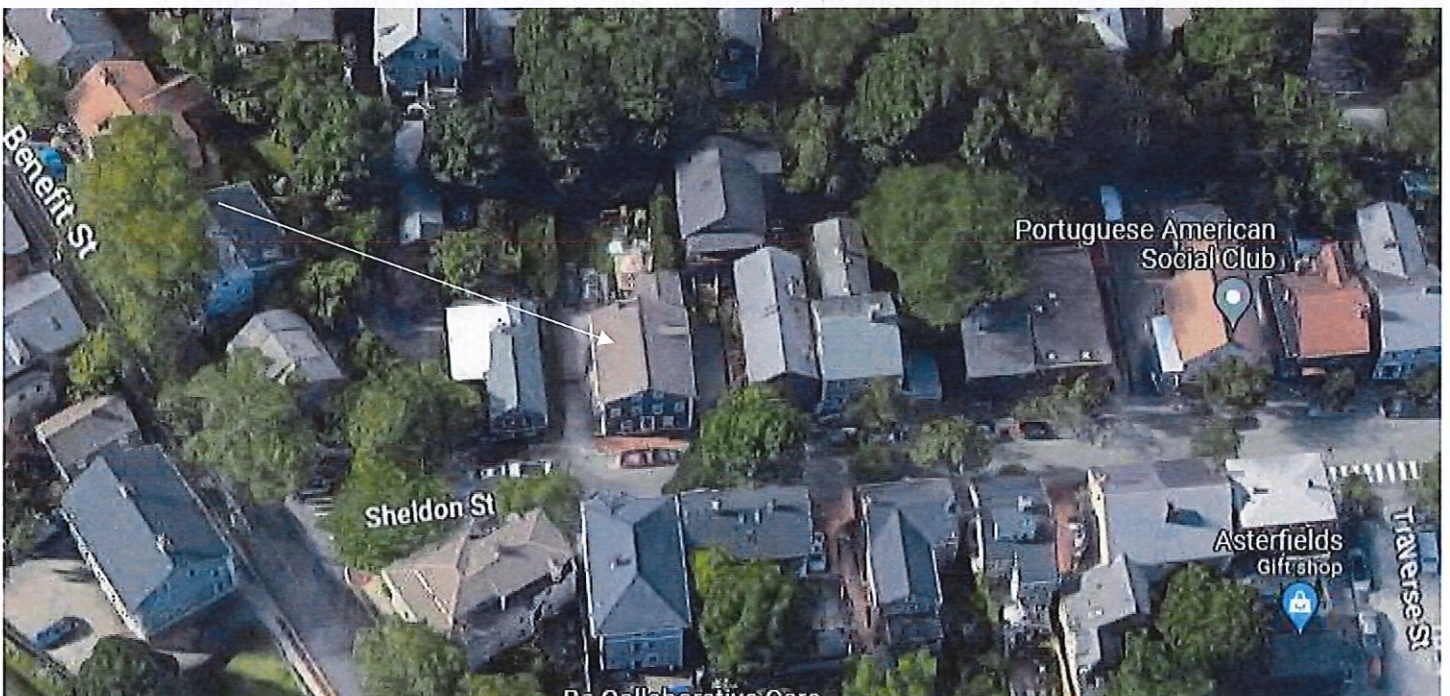
3. CASE 23.015, 12 SHELDON STREET, Zoeth Brown House 1845 (COLLEGE HILL)

Greek Revival, 1 ½ story, clapboarded frame, end-gable-roof house on a raised basement. 3-bays square with a ground-level entry in the center of the gable end with an entablature. A center entry on the west-flank with transom, sidelights and a simple surround is at the first-floor level and is reached by a long flight of stone steps with a wrought iron rail.

CONTRIBUTING



Arrow indicates Street.



Arrow indicates project location, looking north.

Applicant: Chad Blackmore, Blackmore Customs, 575 High Street, Somerset, MA 02726

Owner: Konstantina Svokos, 12 Sheldon Street, Providence, RI 02906

Proposal: The scope of work proposed consists of Major Alterations and includes:

- the installation of three skylights (Velux VS C04 2004, 21"x37 7/8"), two on the west and one on the east slopes of the gable-end roof.

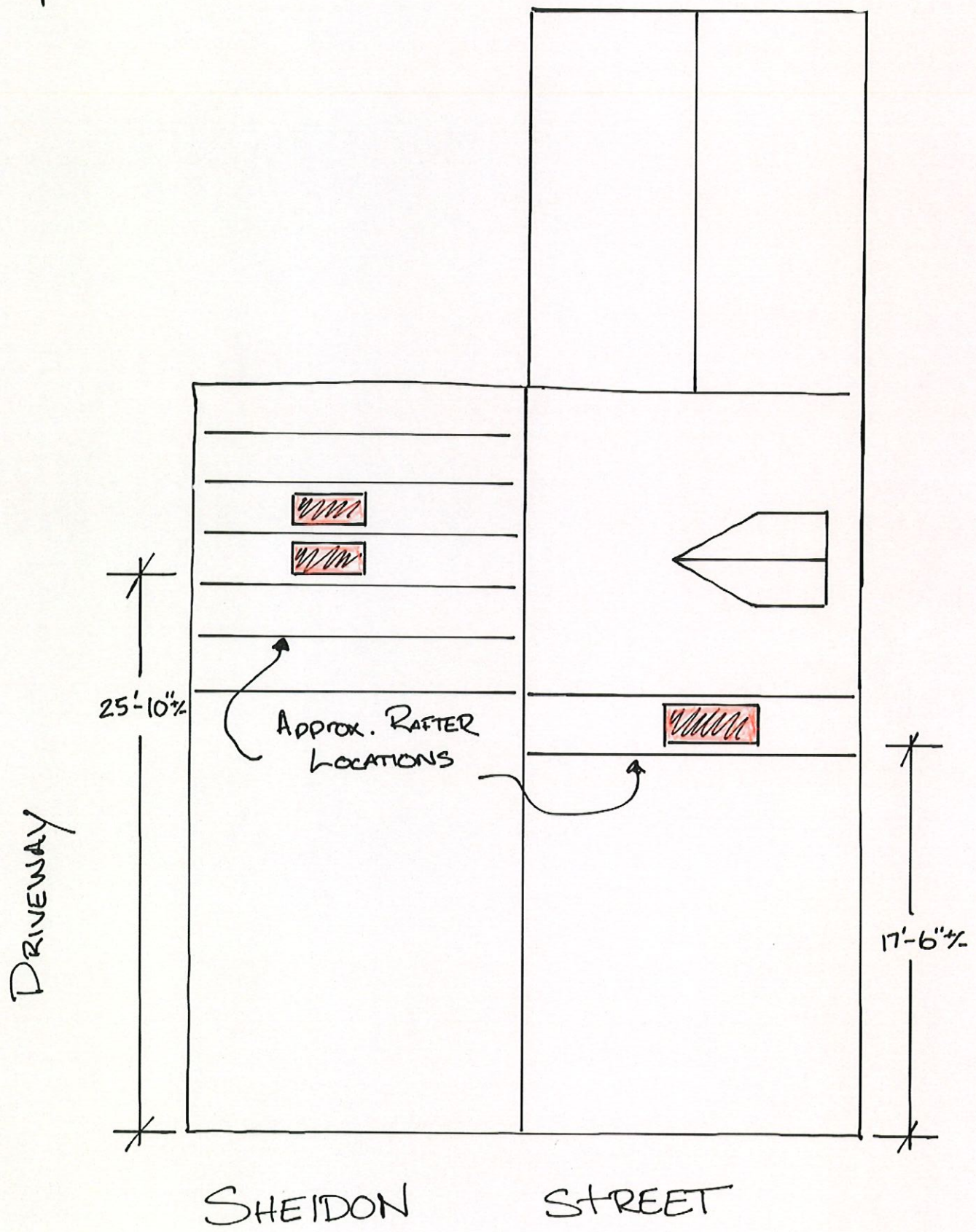
Issues: The following issues are relevant to this application:

- Some of the modifications as proposed will be (minimally) visible from the public rights-of-way, specifically the two skylights proposed for the west slope will be minimally visible, although arguably not "noticeable". The two proposed skylights are set to the northern portion of the slope; and,
- Plans and photos have been submitted.

Recommendations: The staff recommends the PHDC make the following findings of fact:

- a) 12 Sheldon Street is a structure of historical and architectural significance that contributes to the significance of the College Hill local historic district having been recognized as a contributing structure to the College Hill National Historic Landmark District;
- b) The application for Major Alterations is considered complete; and,
- c) The work as amended is in accord with PHDC Standard 8 as follows: the proposed construction is architecturally and historically compatible with the property and district having an appropriate size, scale and form that will not have an adverse effect on the property or district.

Staff recommends a motion be made stating that: The application is considered complete. 12 Sheldon Street is a structure of historical and architectural significance that contributes to the significance of the College Hill local historic district having been recognized as a contributing structure to the College Hill National Historic Landmark District. The Commission grants Final Approval of the proposal as amended having determined that the proposed alterations are appropriate as they are architecturally and historically compatible with the property and district having an appropriate size, scale and form that will not have an adverse effect on the property or district, citing and agreeing to the recommendations in the staff report, with staff to review any additional required details.



VS/S/E Venting Skylight

Technical Product Data Sheet

Description

- VSS/VSE are Venting Deck Mount Skylights that mounts to the roof deck. Venting skylight, provided with various glazings, is manufactured with a white maintenance-free finish (or optional stain grade for VSS) pine frame/sash and a neutral gray aluminum profile (optional copper for VS/VSE) with an insulated glass unit.

Installation

- Designated top, bottom, and sides for installation in one direction.
- Single unit applications or combination flashing for multiple skylight applications.
- 14 degrees to 85 degrees, use standard installation procedure.
- VS includes operating hook. Control rod (ZCT 300) and crank handle (ZZZ 212) available.
- VSS includes external acoustic rain sensor/solar panel and remote.
- VSE includes 20 feet of cord, internal rain sensor and remote.

Flashings

- EDL - Engineered neutral gray flashing for single installation with thin roofing material ($\frac{1}{2}$ " max) for roof pitches from 14-85 degrees.
- EDW - Engineered neutral gray flashing for single installation with tile (over $\frac{3}{4}$ ") roofing material for roof pitches from 14-85 degrees.
- EDM - Engineered neutral gray flashing for single installation with metal roof ($1\frac{1}{2}$ "- $1\frac{3}{4}$ " max profile) for roof pitches from 14-85 degrees.
- EKL - Engineered neutral gray flashing for multiple skylights with thin roofing material (Max. $\frac{5}{16}$ ") on roof pitches from 14 to 85 degrees.
- EKW - Engineered neutral gray flashing for multiple skylights with high profile roofing material (Max. $3\frac{1}{2}$ ") on roof pitches from 15 to 85 degrees.
- Applications less than 14-degree roof pitch - flashing provided by others.

Interior Accessories

- FSCH - Solar powered Room darkening - double pleated shade.
- FSLH - Solar powered Light filtering - single pleated shade.

Type Sign

- Example: VSS C01 0004E 01BM05
- Located on top of interior frame cover.



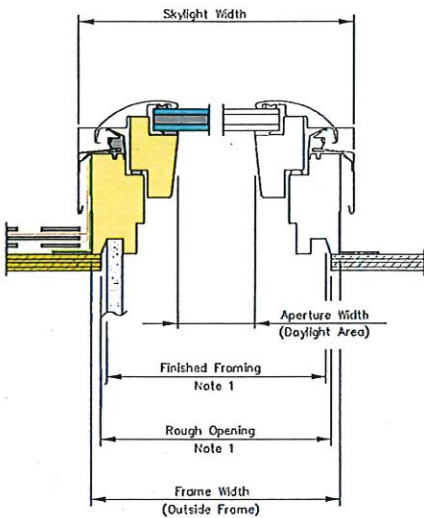
Standard Sizes

- C01, C04, C06, C08, M02, M04, M06, M08, S01, S06
- No custom sizes available.

Warranty

- **Installation** – 10 years from the date of purchase; VELUX No Leak Warranty warrants skylight installation. Must be installed with VELUX flashings and included adhesive underlayment.
- **Skylight** – 10 years from the date of purchase; VELUX warrants that the skylight will be free from defects in material and workmanship.
- **Glass Seal** – 20 years from the date of purchase; VELUX warrants that the insulated glass pane will not develop a material obstruction of vision due to failure of the glass seal.
- **Hail Warranty** – 10 years from the date of purchase; VELUX warrants only laminated glass panes against hail breakage.
- **Accessories and Electrical Components** – 5 years from the date of purchase; VELUX warrants Velux shades and control systems will be free from defects in material and workmanship.

Cross Section

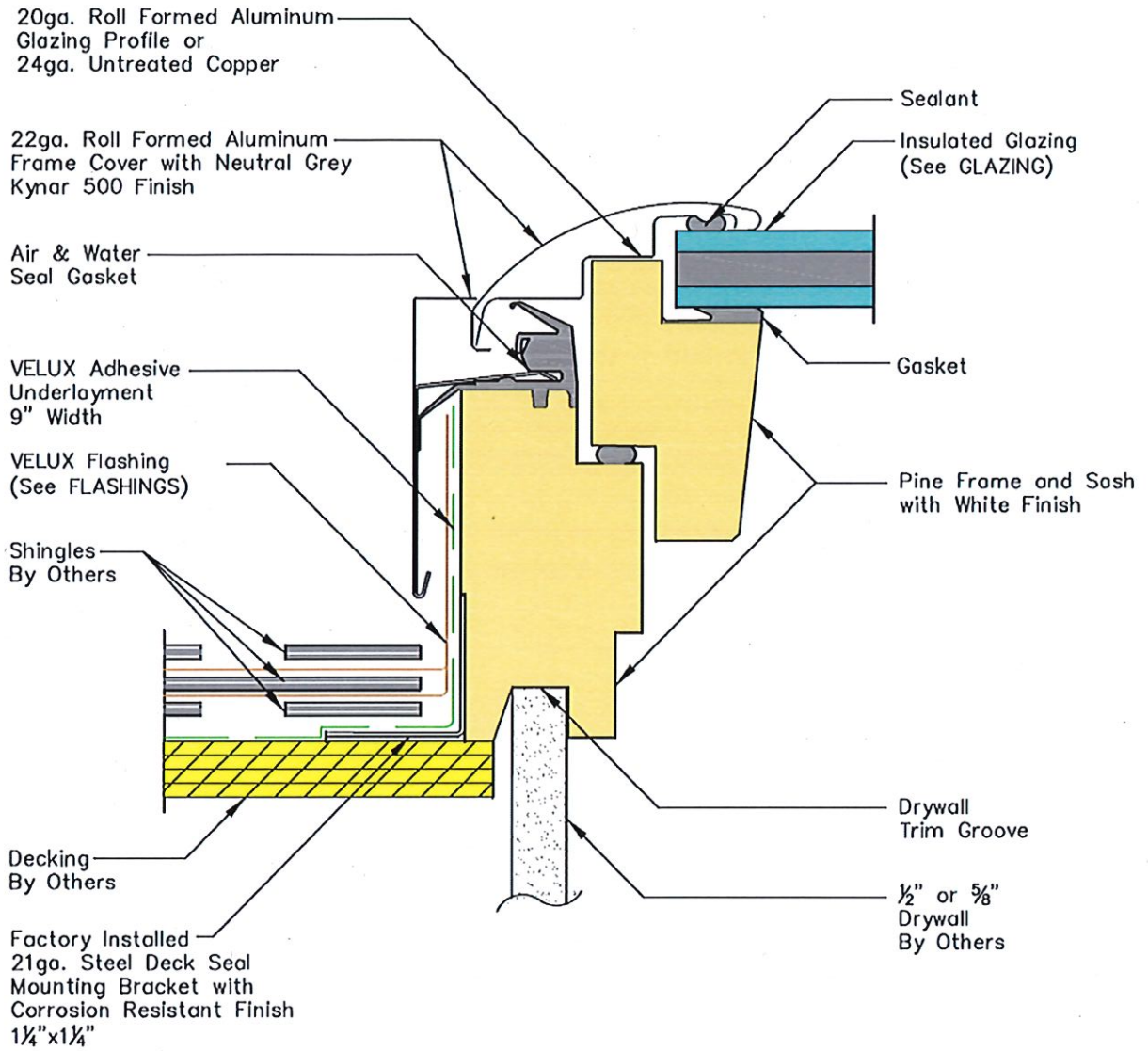


Size	Rough Opening Width	Frame Width	Frame Aperture Width	Skylight Width	Rough Opening Height	Frame Height	Frame Aperture Height	Skylight Height	Daylight Area (Sq. Feet)
C01	21	21 1/2	16	22 5/16	26 7/8	27 3/8	20 7/16	28 3/8	2.27
C04	21	21 1/2	16	22 5/16	37 7/8	38 3/8	31 7/16	39 3/8	3.50
C06	21	21 1/2	16	22 5/16	45 3/4	46 1/4	39 5/16	47 1/4	4.38
C08	21	21 1/2	16	22 5/16	54 7/16	54 5/16	48	55 5/16	5.34
M02	30 1/16	30 9/16	25	31 3/8	30	30 1/2	23 9/16	30	4.11
M04	30 1/16	30 9/16	25	31 3/8	37 7/8	38 3/8	31 7/16	39 3/8	5.48
M06	30 1/16	30 9/16	25	31 3/8	45 3/4	46 1/4	39 5/16	47 1/4	6.86
M08	30 1/16	30 9/16	25	31 3/8	54 7/16	54 5/16	48	55 5/16	8.36
S01	44 1/4	44 3/4	39 1/4	45 9/16	26 7/8	27 3/8	20 7/16	28 3/8	5.57
S06	44 1/4	44 3/4	39 1/4	45 9/16	45 3/4	46 1/4	39 5/16	47 1/4	10.73

Glazings and Certification

Glazing	NFRC U-factor	NFRC SHGC	NFRC Vt	Hallmark 426-H-670	IAPMO-ES ER 199	Fla Prod Approval 13309	HVHZ	TDI
04 Laminated -2.3 mm laminated (0.76 mm interlayer) with tempered Low E366 outer pane.	0.43	0.23	0.53	✓	✓	✓		SK-03
06 Impact - 2.3 mm laminated (2.28 mm interlayer) with tempered Low E366 outer pane for hurricane areas	0.41	0.23	0.53	✓	✓	✓	✓	SK-14
08 White laminated -2.3 mm Laminated (0.76mm white interlayer) with tempered Low E366 outer pane.	0.43	0.22	0.38	✓	✓	✓		SK-03
10 Snowload -3 mm laminated (0.76 mm interlayer) with tempered Low E366 outer pane.	0.42	0.23	0.53	✓				

Consult with Customer Service for special glazing options.



Corner keys made of ASA Luran in neutral grey finish.