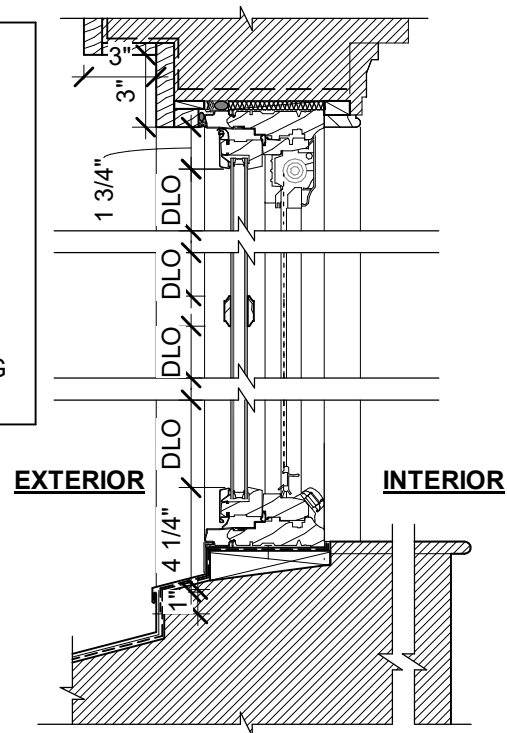
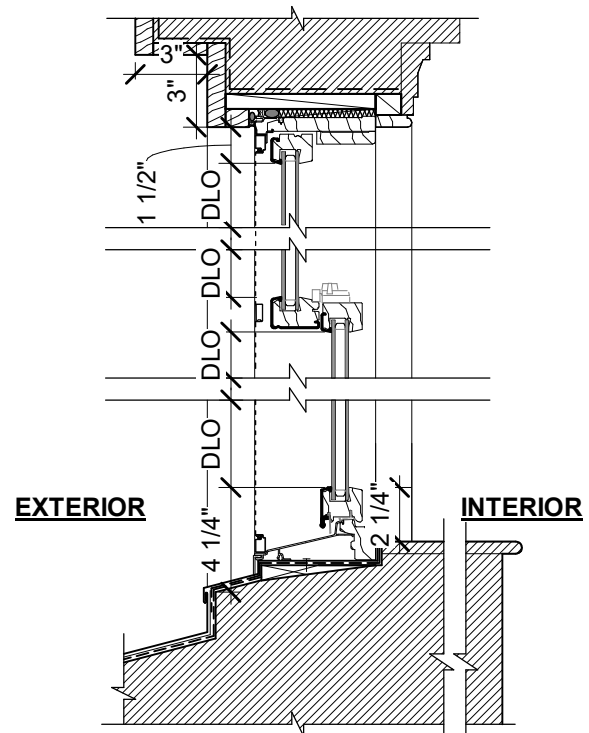


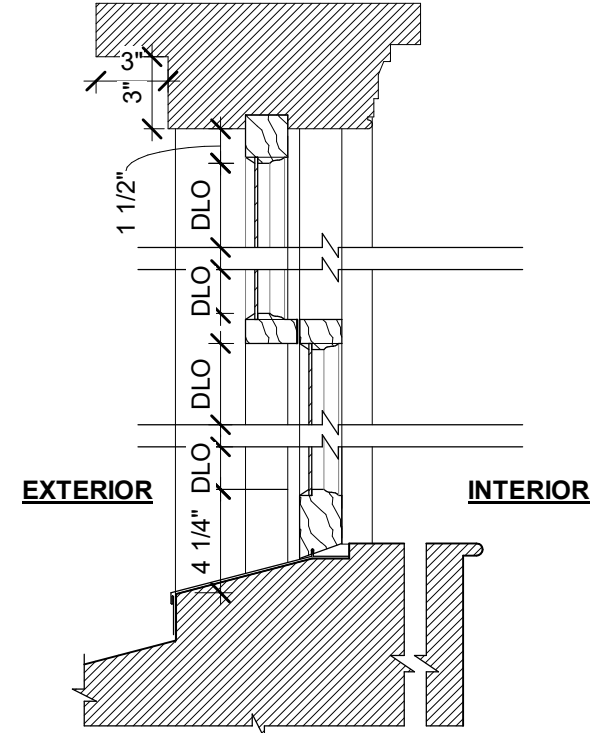
NOTE:
 1) CASEMENT WINDOWS ARE FOR EMERGENCY EGRESS
 2) CENTERLINE OF CHECK RAIL SHALL ALIGN WITH CENTERLINE OF ADJACENT MEETING RAILS



5 PROPOSED CASEMENT SECTION
 1 1/2" = 1'-0"

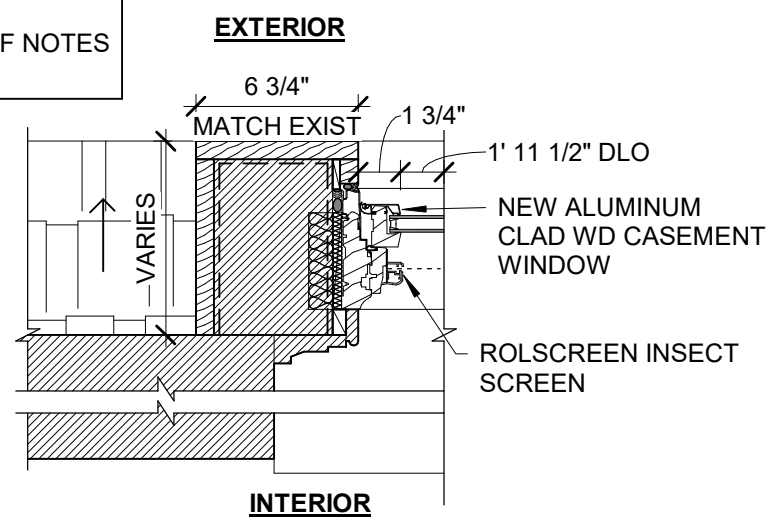


3 PROPOSED DOUBLE HUNG WINDOW SECTION
 1 1/2" = 1'-0"

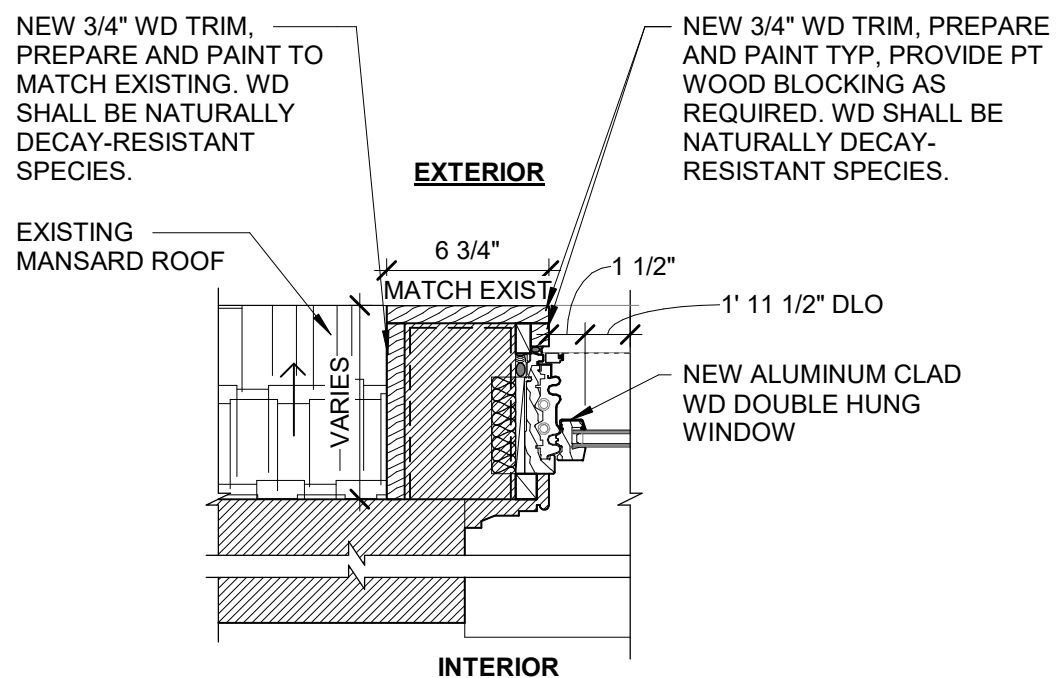


1 EXISTING DOUBLE HUNG WINDOW SECTION
 1 1/2" = 1'-0"

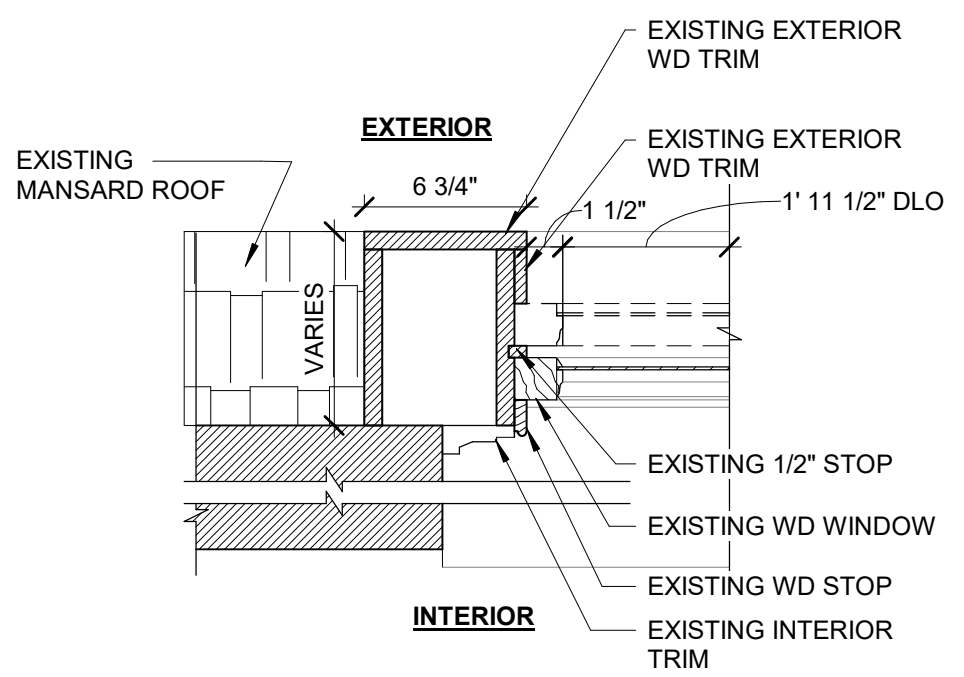
NOTE: REFER TO DETAIL # 4 ON THIS SHEET FOR BALANCE OF NOTES



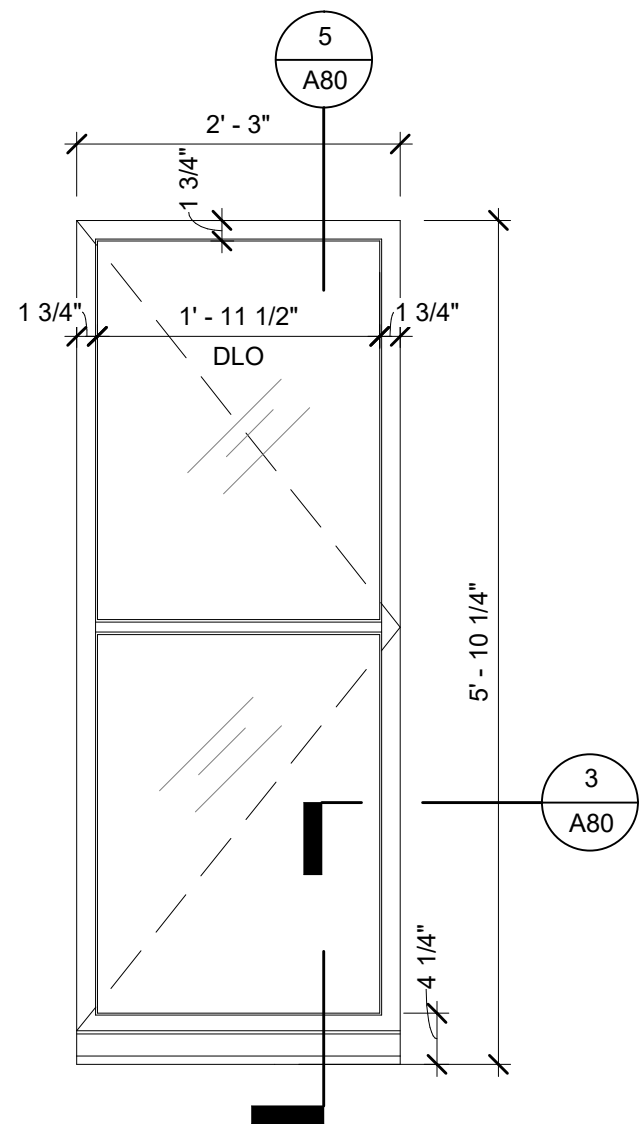
6 PROPOSED CASEMENT WINDOW JAMB DETAIL
 1 1/2" = 1'-0"



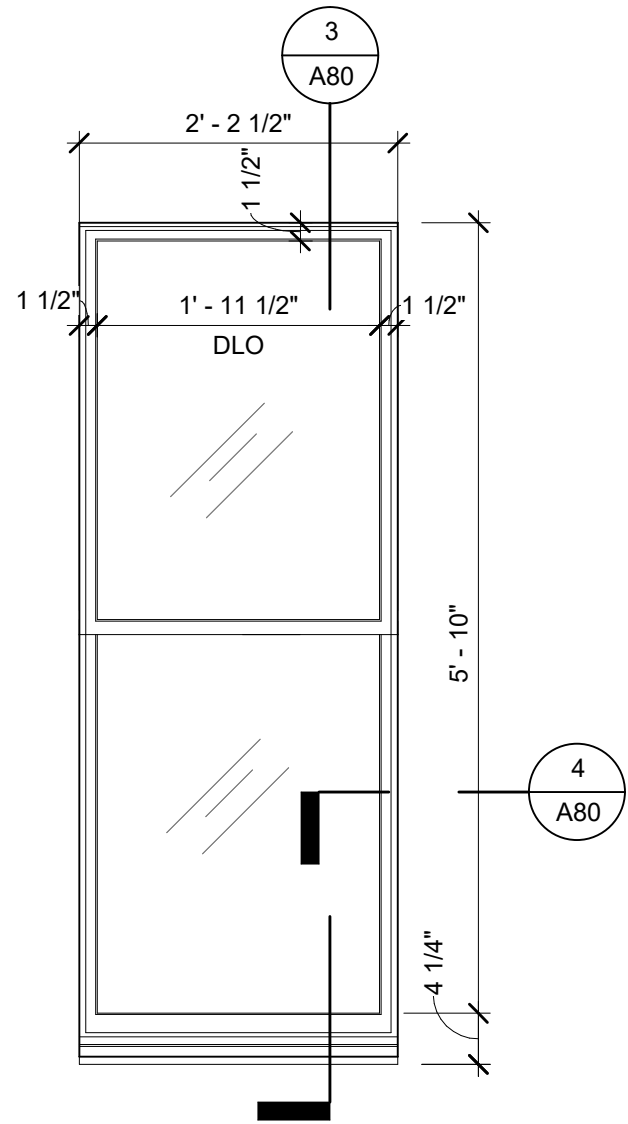
4 PROPOSED DOUBLE HUNG WINDOW JAMB DETAIL
 1 1/2" = 1'-0"



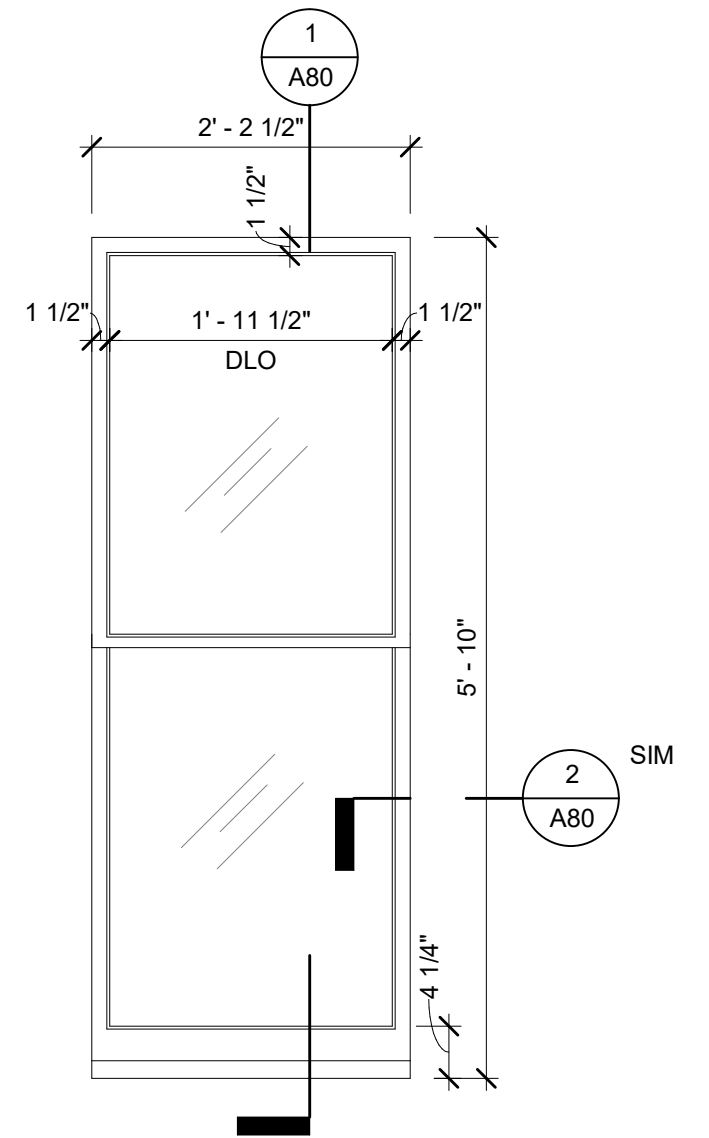
2 EXISTING DOUBLE HUNG WINDOW JAMB
 1 1/2" = 1'-0"



3 PROPOSED CASEMENT WINDOW
3/4" = 1'-0"



2 PROPOSED DOUBLE HUNG WINDOW
3/4" = 1'-0"



1 EXISTING DOUBLE HUNG WINDOW
3/4" = 1'-0"