



Procurement #: 47317>

CITY OF PROVIDENCE, RHODE ISLAND

Department: Parks

RFP Title: Site Improvements at James Ahern Park

Opening Date: 11/18/2024

Addendum #: 1

Issue Date: 10/22/2024

The purpose of this addendum is:

See attached

Providence City Hall
25 Dorrance Street
Providence, RI 02903



WENDY NILSSON
Superintendent of Parks

BRETT P. SMILEY
Mayor

Addendum # 1

SITE IMPROVEMENTS AT JAMES AHERN PARK

October 22, 2024

Total Pages Including Cover (25 Pages)

Acknowledge Addenda on Bid Form

**** BID DUE DATE MONDAY, NOVEMBER 18, 2024, AT 2:15PM ****

Attachments:

1. Addendum Cover Sheet (1 Page)
2. RFP Cover Sheet (1 Page)
3. Vortex Plumbing and Electrical Plan (3 Pages)
4. Prevailing Wage Determination (20 Pages)

Questions/Clarifications:

1. A new Pre-Bid Meeting Date is scheduled for Wednesday, November 6th at 11AM.
A. RFP Cover Sheet reflects this change.
2. Vortex Plumbing and Electrical (P&E) Plan for the Waterpark.
3. Updated prevailing wage determination as of 10/11/24.



**BOARD OF CONTRACT AND SUPPLY
CITY OF PROVIDENCE, RHODE ISLAND**

REQUEST FOR PROPOSALS

Item Description: SITE IMPROVEMENTS AT JAMES AHERN PARK

Procurement/MinuteTraq #: 47317

Date to be opened: 11/18/2024

Issuing Department: Parks

QUESTIONS

- Please direct questions related to the bidding process, how to fill out forms, and how to submit a bid (Pages 1-8) to the Purchasing Department.
 - Email: purchasing@providenceri.gov
 - Please use the subject line “**Solicitation Question**”
- Please direct questions relative to the Minority and Women’s Business Enterprise Program and the corresponding forms (Pages 9-13) to the MBE/WBE Outreach Director for the City of Providence, Grace Diaz
 - Phone: (401) 680-5766
 - Email: gdiaz@providenceri.gov
 - Please use subject line “**MBE WBE Forms**”
- Please direct questions relative to the specifications outlined (beginning on page 14) to the issuing department’s subject matter expert:
 - Name: Ilya Iskhakov
 - Title: Landscape Designer
 - Email Address: iiskhakov@providenceri.gov

Pre-bid Conference

There will be a Non-Mandatory Pre-Bid Conference

Date of Pre-Bid Conference: 11/6/2024 Time: 11 AM

Site Address: 1 Wallace St, Providence, RI 02909

"General Decision Number: RI20240001 10/11/2024

Superseded General Decision Number: RI20230001

State: Rhode Island

Construction Types: Building, Heavy (Heavy and Marine) and Highway

Counties: Rhode Island Statewide.

BUILDING CONSTRUCTION PROJECTS (does not include residential construction consisting of single family homes and apartments up to and including 4 stories) HEAVY, HIGHWAY AND MARINE CONSTRUCTION PROJECTS

Note: Contracts subject to the Davis-Bacon Act are generally required to pay at least the applicable minimum wage rate required under Executive Order 14026 or Executive Order 13658. Please note that these Executive Orders apply to covered contracts entered into by the federal government that are subject to the Davis-Bacon Act itself, but do not apply to contracts subject only to the Davis-Bacon Related Acts, including those set forth at 29 CFR 5.1(a)(1).

<p>If the contract is entered into on or after January 30, 2022, or the contract is renewed or extended (e.g., an option is exercised) on or after January 30, 2022:</p>	<ul style="list-style-type: none"> . Executive Order 14026 generally applies to the contract. . The contractor must pay all covered workers at least \$17.20 per hour (or the applicable wage rate listed on this wage determination, if it is higher) for all hours spent performing on the contract in 2024.
<p>If the contract was awarded on or between January 1, 2015 and January 29, 2022, and the contract is not renewed or extended on or after January 30, 2022:</p>	<ul style="list-style-type: none"> . Executive Order 13658 generally applies to the contract. . The contractor must pay all covered workers at least \$12.90 per hour (or the applicable wage rate listed on this wage determination,

	if it is higher) for all hours spent performing on that contract in 2024.
--	---

The applicable Executive Order minimum wage rate will be adjusted annually. If this contract is covered by one of the Executive Orders and a classification considered necessary for performance of work on the contract does not appear on this wage determination, the contractor must still submit a conformance request.

Additional information on contractor requirements and worker protections under the Executive Orders is available at <http://www.dol.gov/whd/govcontracts>.

Modification Number	Publication Date
0	01/05/2024
1	01/12/2024
2	02/23/2024
3	03/08/2024
4	03/22/2024
5	04/05/2024
6	05/24/2024
7	05/31/2024
8	06/14/2024
9	06/21/2024
10	07/05/2024
11	07/12/2024
12	08/23/2024
13	08/30/2024
14	09/20/2024
15	10/11/2024

* ASBE0006-006 09/01/2024

Rates

Fringes

HAZARDOUS MATERIAL HANDLER

(Includes preparation,
wetting, stripping, removal
scrapping, vacuuming, bagging
& disposing of all insulation
materials, whether they
contain asbestos or not, from
mechanical systems).....\$ 49.91

36.63

* ASBE0006-008 09/01/2024

	Rates	Fringes
--	-------	---------

Asbestos Worker/Insulator

Includes application of
all insulating materials,
protective coverings,
coatings & finishes to all
types of mechanical systems.

\$ 49.91	36.63
----------	-------

BOIL0029-001 01/01/2021

	Rates	Fringes
--	-------	---------

BOILERMAKER.....	\$ 45.87	29.02
------------------	----------	-------

BRRI0003-001 06/01/2022

	Rates	Fringes
--	-------	---------

Bricklayer, Stonemason, Pointer, Caulker & Cleaner.....	\$ 46.86	29.14
--	----------	-------

BRRI0003-002 09/01/2022

	Rates	Fringes
--	-------	---------

Marble Setter, Terrazzo Worker & Tile Setter.....	\$ 46.54	30.34
--	----------	-------

BRRI0003-003 09/01/2022

	Rates	Fringes
--	-------	---------

Marble, Tile & Terrazzo Finisher.....	\$ 38.78	29.61
--	----------	-------

CARP0330-001 06/03/2024

	Rates	Fringes
--	-------	---------

CARPENTER (Includes Soft Floor Layer).....	\$ 45.13	30.25
Diver Tender.....	\$ 44.88	30.25
DIVER.....	\$ 57.03	30.25
Piledriver.....	\$ 41.53	29.35
WELDER.....	\$ 44.88	30.25

FOOTNOTES:

When not diving or tending the diver, the diver and diver tender shall receive the piledriver rate. Diver tenders shall receive \$1.00 per hour above the pile driver rate when tending the diver.

Work on free-standing stacks, concrete silos & public utility electrical power houses, which are over 35 ft. in height when constructed: \$.50 per hour additional.

Work on exterior concrete shear wall gang forms, 45 ft. or more above ground elevation or on setback: \$.50 per hour additional.

The designated piledriver, known as the "monkey": \$1.00 per hour additional.

CARP1121-002 01/02/2023

	Rates	Fringes
MILLWRIGHT.....	\$ 41.54	30.73

ELEC0099-002 06/01/2024

	Rates	Fringes
ELECTRICIAN.....	\$ 52.11	47.25%
Teledata System Installer.....	\$ 39.09	11.02%+15.31

FOOTNOTES:

Work of a hazardous nature, or where the work height is 30 ft. or more from the floor, except when working OSHA-approved lifts: 20% per hour additional.

Work in tunnels below ground level in combined sewer outfall: 20% per hour additional.

ELEV0039-001 01/01/2024

	Rates	Fringes
ELEVATOR MECHANIC.....	\$ 61.88	37.885+a+b

FOOTNOTES:

a. PAID HOLIDAYS: New Years Day; Memorial Day; Independence Day; Labor Day; Veterans' Day; Thanksgiving Day; the Friday after Thanksgiving Day; and Christmas Day.

b. Employer contributes 8% basic hourly rate for 5 years or more of service of 6% basic hourly rate for 6 months to 5 years of service as vacation pay credit.

 ENGI0057-001 06/01/2024

Rates

Fringes

Operating Engineer: (power plants, sewer treatment plants, pumping stations, tunnels, caissons, piers, docks, bridges, wind turbines, subterranean & other marine and heavy construction work)

GROUP 1.....	\$ 48.05	29.25
GROUP 2.....	\$ 46.05	29.25
GROUP 3.....	\$ 41.67	29.25
GROUP 4.....	\$ 38.82	29.25
GROUP 5.....	\$ 45.10	29.25
GROUP 6.....	\$ 35.90	29.25
GROUP 7.....	\$ 29.90	29.25
GROUP 8.....	\$ 41.75	29.25
GROUP 9.....	\$ 45.67	29.25

a. BOOM LENGTHS, INCLUDING JIBS:

150 feet and over + \$ 2.00
 180 feet and over + \$ 3.00
 210 feet and over + \$ 4.00
 240 feet and over + \$ 5.00
 270 feet and over + \$ 7.00
 300 feet and over + \$ 8.00
 350 feet and over + \$ 9.00
 400 feet and over + \$10.00

a. PAID HOLIDAYS:

New Year's Day, President's Day, Memorial Day, July Fourth, Victory Day, Labor Day, Columbus Day, Veterans Day, Thanksgiving Day, Christmas Day. a: Any employee who works 3 days in the week in which a holiday falls shall be paid for the holiday.

a. FOOTNOTES:

Hazmat work: \$2.00 per hour additional.

Tunnel/Shaft work: \$5.00 per hour additional.

POWER EQUIPMENT OPERATORS CLASSIFICATIONS

GROUP 1: Cranes, lighters, boom trucks and derricks

GROUP 2: Digging machine, Ross Carrier, locomotive, hoist, elevator, bidwell-type machine, shot & water blasting machine, paver, spreader, graders, front end loader (3 yds. and over), vibratory hammer & vacuum truck, roadheaders, forklifts, economobile type equipment, tunnel boring machines, concrete pump and on site concrete plants.

GROUP 3: Oilers on cranes.

GROUP 4: Oiler on crawler backhoe.

GROUP 5: Bulldozer, bobcats, skid steer loader, tractor, scraper, combination loader backhoe, roller, front end loader (less than 3 yds.), street and mobile-powered sweeper (3-yd. capacity), 8-ft. sweeper minimum 65 HP).

GROUP 6: Well-point installation crew.

GROUP 7: Utility Engineers and Signal Persons

GROUP 8: Heater, concrete mixer, stone crusher, welding machine, generator and light plant, gas and electric driven pump and air compressor.

GROUP 9: Boat & tug operator.

ENGI0057-003 06/01/2024

BUILDING CONSTRUCTION

	Rates	Fringes
Power Equipment Operator		
GROUP 1.....	\$ 47.32	29.90
GROUP 2.....	\$ 45.32	29.90
GROUP 3.....	\$ 45.10	29.90
GROUP 4.....	\$ 41.10	29.90
GROUP 5.....	\$ 37.50	29.90
GROUP 6.....	\$ 38.25	29.90

GROUP 7.....	\$ 43.97	29.90
GROUP 8.....	\$ 41.29	29.90

a. BOOM LENGTHS, INCLUDING JIBS:

150 ft. and over: + \$ 2.00
 180 ft. and over: + \$ 3.00
 210 ft. and over: + \$ 4.00
 240 ft. and over: + \$ 5.00
 270 ft. and over: + \$ 7.00
 300 ft. and over: + \$ 8.00
 350 ft. and over: + \$ 9.00
 400 ft. and over: + \$10.00

a. PAID HOLIDAYS: New Year's Day, President's Day, Memorial Day, July Fourth, Victory Day, Labor Day, Columbus Day, Veterans Day, Thanksgiving Day & Christmas Day. a: Any employee who works 3 days in the week in which a holiday falls shall be paid for the holiday.

a. FOOTNOTE: Hazmat work: \$2.00 per hour additional.
 Tunnel/Shaft work: \$5.00 per hour additional.

POWER EQUIPMENT OPERATORS CLASSIFICATIONS

GROUP 1: Cranes, lighters, boom trucks and derricks.

GROUP 2: Digging machine, Ross carrier, locomotive, hoist, elevator, bidwell-type machine, shot & water blasting machine, paver, spreader, front end loader (3 yds. and over), vibratory hammer and vacuum truck

GROUP 3: Telehandler equipment, forklift, concrete pump & on-site concrete plant

GROUP 4: Fireman & oiler on cranes

GROUP 5: Oiler on crawler backhoe

GROUP 6: Bulldozer, skid steer loaders, bobcats, tractor, grader, scraper, combination loader backhoe, roller, front end loader (less than 3 yds.), street and mobile powered sweeper (3 yds. capacity), 8-ft. sweeper (minimum 65 hp)

GROUP 7: Well point installation crew

GROUP 8: Heater, concrete mixer, stone crusher, welding machine, generator for light plant, gas and electric driven

pump & air compressor

ENGI0057-005 05/01/2024

	Rates	Fringes
Power Equipment Operator (highway construction projects; water and sewerline projects which are incidental to highway construction projects; and bridge projects that do not span water)		
GROUP 1.....	\$ 43.20	29.25
GROUP 2.....	\$ 41.20	29.25
GROUP 3.....	\$ 35.90	29.25
GROUP 4.....	\$ 22.50	29.25
GROUP 5.....	\$ 29.90	29.25
GROUP 6.....	\$ 36.48	29.25
GROUP 7.....	\$ 40.18	29.25
GROUP 8.....	\$ 35.45	29.25

a. FOOTNOTE: a. Any employee who works three days in the week in which a holiday falls shall be paid for the holiday.

b. PAID HOLIDAYS: New Year's Day, President's Day, Memorial Day, July Fourth, Victory Day, Labor Day, Columbus Day, Veterans Day, Thanksgiving Day & Christmas Day.

POWER EQUIPMENT OPERATOR CLASSIFICATIONS

GROUP 1: Cranes, pile drivers, lighters, boom trucks, hoists, derricks

GROUP 2: Digging machines, excavators, locomotives, John Henry's, directional drilling machines, cold planers, reclaimers, pavers, spreaders, graders, front-end loaders (3yds & over), vacuum truck, drill/boring machine operators, vermeer saw, water blaster, hydraulic-demolition robot, Ross Carriers, concrete pump operators, asphalt/material transfer machines, rotating telehandlers, SPMT type equipment

GROUP 3: Wellpoint installation and drill/boring machine assistants

GROUP 4: Utility engineers

GROUP 5: Signal persons

GROUP 6: Oilers on cranes and deckhands

GROUP 7: Combination loader / backhoes, front-end loaders (less than 3 yds.), forklift, bulldozers, scrapers, boats, rollers, skid steer loaders (regardless of attachments), street sweepers, mechanics, welders, operators in materials yards, shops and garages

GROUP 8: Gas and electric drive heaters, concrete mixers, light plants, welding machines, pumps and compressors

IRON0037-001 03/16/2024

	Rates	Fringes
IRONWORKER.....	\$ 40.75	32.83

LAB00271-001 12/03/2023

BUILDING CONSTRUCTION

	Rates	Fringes
LABORER		
GROUP 1.....	\$ 37.00	26.90
GROUP 2.....	\$ 37.00	26.90
GROUP 3.....	\$ 37.00	26.90
GROUP 4.....	\$ 37.00	26.90
GROUP 5.....	\$ 39.00	26.90

LABORERS CLASSIFICATIONS

GROUP 1: Laborer, Carpenter Tender, Mason Tender, Cement Finisher Tender, Scaffold Erector, Wrecking Laborer, Asbestos Removal [Non-Mechanical Systems]

GROUP 2: Asphalt Raker, Adzemen, Pipe Trench Bracer, Demolition Burner, Chain Saw Operator, Fence & Guard Rail Erector, Setter of Metal Forms for Roadways, Mortar Mixer, Pipelayer, Riprap & Dry Stonewall Builder, Highway Stone Spreader, Pneumatic Tool Operator, Wagon Drill Operator, Tree Trimmer, Barco-Type Jumping Tamper, Mechanical Grinder Operator

GROUP 3: Pre-Cast Floor & Roof Plank Erectors

GROUP 4: Air Track Operator, Hydraulic & Similar Self-Powered Drill, Block Paver, Rammer, Curb Setter, Powderman & Blaster

GROUP 5: Toxic Waste Remover

LABORERS CLASSIFICATIONS

GROUP 1: Laborer, Carpenter Tender, Mason Tender, Cement Finisher Tender, Scaffold Erector, Wrecking Laborer, Asbestos Removal [Non-Mechanical Systems]

GROUP 2: Asphalt Raker, Adzemen, Pipe Trench Bracer, Demolition Burner, Chain Saw Operator, Fence & Guard Rail Erector, Setter of Metal Forms for Roadways, Mortar Mixer, Pipelayer, Riprap & Dry Stonewall Builder, Highway Stone Spreader, Pneumatic Tool Operator, Wagon Drill Operator, Tree Trimmer, Barco-Type Jumping Tamper, Mechanical Grinder Operator

GROUP 3: Pre-Cast Floor & Roof Plank Erectors

GROUP 4: Air Track Operator, Hydraulic & Similar Self-Powered Drill, Block Paver, Rammer, Curb Setter, Powderman & Blaster

GROUP 5: Toxic Waste Remover

LAB00271-002 11/27/2022

HEAVY AND HIGHWAY CONSTRUCTION

	Rates	Fringes
LABORER		
COMPRESSED AIR		
Group 1.....	\$ 55.40	24.15
Group 2.....	\$ 52.93	24.15
Group 3.....	\$ 42.45	24.15
FREE AIR		
Group 1.....	\$ 46.00	24.15
Group 2.....	\$ 45.00	24.15
Group 3.....	\$ 42.45	24.15
LABORER		
Group 1.....	\$ 33.05	24.05
Group 2.....	\$ 35.75	24.85
Group 3.....	\$ 36.50	24.85
Group 4.....	\$ 29.00	24.85
Group 5.....	\$ 37.50	24.85
OPEN AIR CAISSON, UNDERPINNING WORK AND BORING CREW		

Bottom Man.....	\$ 41.50	24.15
Top Man & Laborer.....	\$ 35.60	24.15
TEST BORING		
Driller.....	\$ 41.95	24.15
Laborer.....	\$ 41.95	24.15

LABORER CLASSIFICATIONS

GROUP 1: Laborer; Carpenter tender; Cement finisher tender; Wrecking laborer; Asbestos removers [non-mechanical systems]; Plant laborer; Driller in quarries

GROUP 2: Adzeperson; Asphalt raker; Barcotype jumping tamper; Chain saw operators; Concrete and power buggy operator; Concrete saw operator; Demolition burner; Fence and guard rail erector; Highway stone spreader; Laser beam operator; Mechanical grinder operator; Mason tender; Mortar mixer; Pneumatic tool operator; Riprap and dry stonewall builder; Scaffold erector; Setter of metal forms for roadways; Wagon drill operator; Wood chipper operator; Pipelayer; Pipe trench bracer

GROUP 3: Air track drill operator; Hydraulic and similar powered drills; Brick paver; Block paver; Rammer and curb setter; Powderperson and blaster

GROUP 4: Flagger & signaler

GROUP 5: Toxic waste remover

LABORER - COMPRESSED AIR CLASSIFICATIONS

GROUP 1: Mucking machine operator, tunnel laborer, brake person, track person, miner, grout person, lock tender, gauge tender, miner: motor person & all others in compressed air

GROUP 2: Change house attendant, powder watchperson, top person on iron

GROUP 3: Hazardous waste work within the ""HOT"" zone

LABORER - FREE AIR CLASSIFICATIONS

GROUP 1: Grout person - pumps, brake person, track person, form mover & stripper (wood & steel), shaft laborer, laborer topside, outside motorperson, miner, conveyor operator, miner welder, heading motorperson, erecting operator, mucking machine operator, nozzle person, rodperson, safety miner, shaft & tunnel, steel & rodperson, mole nipper, concrete worker, form erector (wood, steel and all accessories), cement

finisher (this type of work only), top signal person, bottom person (when heading is 50' from shaft), burner, shield operator and TBM operator

GROUP 2: Change house attendant, powder watchperson

GROUP 3: Hazardous waste work within the ""HOT"" zone

LABORER CLASSIFICATIONS

GROUP 1: Laborer; Carpenter tender; Cement finisher tender; Wrecking laborer; Asbestos removers [non-mechanical systems]; Plant laborer; Driller in quarries

GROUP 2: Adzeperson; Asphalt raker; Barcotype jumping tamper; Chain saw operators; Concrete and power buggy operator; Concrete saw operator; Demolition burner; Fence and guard rail erector; Highway stone spreader; Laser beam operator; Mechanical grinder operator; Mason tender; Mortar mixer; Pneumatic tool operator; Riprap and dry stonewall builder; Scaffold erector; Setter of metal forms for roadways; Wagon drill operator; Wood chipper operator; Pipelayer; Pipe trench bracer

GROUP 3: Air track drill operator; Hydraulic and similar powered drills; Brick paver; Block paver; Rammer and curb setter; Powderperson and blaster

GROUP 4: Flagger & signaler

GROUP 5: Toxic waste remover

LABORER - COMPRESSED AIR CLASSIFICATIONS

GROUP 1: Mucking machine operator, tunnel laborer, brake person, track person, miner, grout person, lock tender, gauge tender, miner: motor person & all others in compressed air

GROUP 2: Change house attendant, powder watchperson, top person on iron

GROUP 3: Hazardous waste work within the ""HOT"" zone

LABORER - FREE AIR CLASSIFICATIONS

GROUP 1: Grout person - pumps, brake person, track person, form mover & stripper (wood & steel), shaft laborer,

laborer topside, outside motorperson, miner, conveyor operator, miner welder, heading motorperson, erecting operator, mucking machine operator, nozzle person, rodperson, safety miner, shaft & tunnel, steel & rodperson, mole nipper, concrete worker, form erector (wood, steel and all accessories), cement finisher (this type of work only), top signal person, bottom person (when heading is 50' from shaft), burner, shield operator and TBM operator

GROUP 2: Change house attendant, powder watchperson

GROUP 3: Hazardous waste work within the ""HOT"" zone

PAIN0011-005 06/01/2024

	Rates	Fringes
PAINTER		
Brush and Roller.....	\$ 38.07	25.80
Epoxy, Tanks, Towers, Swing Stage & Structural Steel.....	\$ 40.07	25.80
Spray, Sand & Water Blasting.....	\$ 41.07	25.80
Taper.....	\$ 38.82	25.80
Wall Coverer.....	\$ 38.57	25.80

PAIN0011-006 06/01/2024

	Rates	Fringes
GLAZIER.....	\$ 41.63	26.15

FOOTNOTES:

SWING STAGE: \$1.00 per hour additional.

PAID HOLIDAYS: Labor Day & Christmas Day.

PAIN0011-011 06/01/2024

	Rates	Fringes
Painter (Bridge Work).....	\$ 57.85	26.40

PAIN0035-008 06/01/2011

Rates

Fringes

Sign Painter.....	\$ 24.79	13.72
-------------------	----------	-------

 PLAS0040-001 01/01/2024

BUILDING CONSTRUCTION

Rates

Fringes

CEMENT MASON/CONCRETE FINISHER...	\$ 43.00	29.10
-----------------------------------	----------	-------

FOOTNOTE: Cement Mason: Work on free swinging scaffolds under
 3 planks width and which is 20 or more feet above ground
 and any offset structure: \$.30 per hour additional.

 PLAS0040-002 01/01/2024

HEAVY AND HIGHWAY CONSTRUCTION

Rates

Fringes

CEMENT MASON/CONCRETE FINISHER...	\$ 38.45	25.30
-----------------------------------	----------	-------

 PLAS0040-003 01/01/2024

Rates

Fringes

PLASTERER.....	\$ 43.65	29.43
----------------	----------	-------

 * PLUM0051-002 08/26/2024

Rates

Fringes

Plumbers and Pipefitters.....	\$ 52.49	33.60
-------------------------------	----------	-------

 ROOF0033-004 06/01/2024

Rates

Fringes

ROOFER.....	\$ 44.80	31.13
-------------	----------	-------

 SFRI0669-001 04/01/2024

Rates

Fringes

SPRINKLER FITTER.....	\$ 49.98	32.85
-----------------------	----------	-------

SHEE0017-002 06/01/2024

	Rates	Fringes
Sheet Metal Worker.....	\$ 42.69	38.45

TEAM0251-001 05/01/2024		

HEAVY AND HIGHWAY CONSTRUCTION

	Rates	Fringes
TRUCK DRIVER		
GROUP 1.....	\$ 30.71	36.9125+A+B
GROUP 2.....	\$ 30.86	36.9125+A+B
GROUP 3.....	\$ 30.91	36.9125+A+B
GROUP 4.....	\$ 30.96	36.9125+A+B
GROUP 5.....	\$ 31.06	36.9125+A+B
GROUP 6.....	\$ 31.46	36.9125+A+B
GROUP 7.....	\$ 31.66	36.9125+A+B
GROUP 8.....	\$ 31.16	36.9125+A+B
GROUP 9.....	\$ 31.41	36.9125+A+B
GROUP 10.....	\$ 31.21	36.9125+A+B

FOOTNOTES:

A. Paid Holidays: New Year's Day, Memorial Day, Independence Day, Labor Day, Thanksgiving Day and Christmas Day, plus Presidents' Day, Columbus Day, Veteran's Day & V-J Day, providing the employee has worked at least one day in the calendar week in which the holiday falls.

B. Employee who has been on the payroll for 1 year or more but less than 5 years and has worked 150 Days during the last year of employment shall receive 1 week's paid vacation; 5 to 10 years - 2 weeks' paid vacation; 10 or more years - 3 week's paid vacation.

C. Employees on the seniority list shall be paid a one hundred dollar (\$100.00) bonus for every four hundred (400) hours worked, up to a maximum of five hundred dollars (\$500.00)

All drivers working on a defined hazard material job site shall be paid a premium of \$2.00 per hour over applicable rate.

TRUCK DRIVER CLASSIFICATIONS

GROUP 1: Pick-up trucks, station wagons, & panel trucks

GROUP 2: Two-axle on low beds

GROUP 3: Two-axle dump truck

GROUP 4: Three-axle dump truck

GROUP 5: Four- and five-axle equipment

GROUP 6: Low-bed or boom trailer.

GROUP 7: Trailers when used on a double hook up (pulling 2 trailers)

GROUP 8: Special earth-moving equipment, under 35 tons

GROUP 9: Special earth-moving equipment, 35 tons or over

GROUP 10: Tractor trailer

WELDERS - Receive rate prescribed for craft performing operation to which welding is incidental.

=====

Note: Executive Order (EO) 13706, Establishing Paid Sick Leave for Federal Contractors applies to all contracts subject to the Davis-Bacon Act for which the contract is awarded (and any solicitation was issued) on or after January 1, 2017. If this contract is covered by the EO, the contractor must provide employees with 1 hour of paid sick leave for every 30 hours they work, up to 56 hours of paid sick leave each year. Employees must be permitted to use paid sick leave for their own illness, injury or other health-related needs, including preventive care; to assist a family member (or person who is like family to the employee) who is ill, injured, or has other health-related needs, including preventive care; or for reasons resulting from, or to assist a family member (or person who is like family to the employee) who is a victim of, domestic violence, sexual assault, or stalking. Additional information on contractor requirements and worker protections under the EO is available at <https://www.dol.gov/agencies/whd/government-contracts>.

Unlisted classifications needed for work not included within the scope of the classifications listed may be added after

award only as provided in the labor standards contract clauses (29CFR 5.5 (a) (1) (iii)).

The body of each wage determination lists the classification and wage rates that have been found to be prevailing for the cited type(s) of construction in the area covered by the wage determination. The classifications are listed in alphabetical order of ""identifiers"" that indicate whether the particular rate is a union rate (current union negotiated rate for local), a survey rate (weighted average rate) or a union average rate (weighted union average rate).

Union Rate Identifiers

A four letter classification abbreviation identifier enclosed in dotted lines beginning with characters other than ""SU"" or ""UAVG"" denotes that the union classification and rate were prevailing for that classification in the survey. Example: PLUM0198-005 07/01/2014. PLUM is an abbreviation identifier of the union which prevailed in the survey for this classification, which in this example would be Plumbers. 0198 indicates the local union number or district council number where applicable, i.e., Plumbers Local 0198. The next number, 005 in the example, is an internal number used in processing the wage determination. 07/01/2014 is the effective date of the most current negotiated rate, which in this example is July 1, 2014.

Union prevailing wage rates are updated to reflect all rate changes in the collective bargaining agreement (CBA) governing this classification and rate.

Survey Rate Identifiers

Classifications listed under the ""SU"" identifier indicate that no one rate prevailed for this classification in the survey and the published rate is derived by computing a weighted average rate based on all the rates reported in the survey for that classification. As this weighted average rate includes all rates reported in the survey, it may include both union and non-union rates. Example: SULA2012-007 5/13/2014. SU indicates the rates are survey rates based on a weighted average calculation of rates and are not majority rates. LA indicates the State of Louisiana. 2012 is the year of survey on which these classifications and rates are based. The next number, 007

in the example, is an internal number used in producing the wage determination. 5/13/2014 indicates the survey completion date for the classifications and rates under that identifier.

Survey wage rates are not updated and remain in effect until a new survey is conducted.

Union Average Rate Identifiers

Classification(s) listed under the UAVG identifier indicate that no single majority rate prevailed for those classifications; however, 100% of the data reported for the classifications was union data. EXAMPLE: UAVG-OH-0010 08/29/2014. UAVG indicates that the rate is a weighted union average rate. OH indicates the state. The next number, 0010 in the example, is an internal number used in producing the wage determination. 08/29/2014 indicates the survey completion date for the classifications and rates under that identifier.

A UAVG rate will be updated once a year, usually in January of each year, to reflect a weighted average of the current negotiated/CBA rate of the union locals from which the rate is based.

State Adopted Rate Identifiers

Classifications listed under the "SA" identifier indicate that the prevailing wage rate set by a state (or local) government was adopted under 29 C.F.R. 1.3(g)-(h). Example: SAME2023-007 01/03/2024. SA reflects that the rates are state adopted. ME refers to the State of Maine. 2023 is the year during which the state completed the survey on which the listed classifications and rates are based. The next number, 007 in the example, is an internal number used in producing the wage determination. 01/03/2024 reflects the date on which the classifications and rates under the ?SA? identifier took effect under state law in the state from which the rates were adopted.

WAGE DETERMINATION APPEALS PROCESS

1.) Has there been an initial decision in the matter? This can be:

- * an existing published wage determination
- * a survey underlying a wage determination
- * a Wage and Hour Division letter setting forth a position on a wage determination matter

- * a conformance (additional classification and rate) ruling

On survey related matters, initial contact, including requests for summaries of surveys, should be with the Wage and Hour National Office because National Office has responsibility for the Davis-Bacon survey program. If the response from this initial contact is not satisfactory, then the process described in 2.) and 3.) should be followed.

With regard to any other matter not yet ripe for the formal process described here, initial contact should be with the Branch of Construction Wage Determinations. Write to:

Branch of Construction Wage Determinations
Wage and Hour Division
U.S. Department of Labor
200 Constitution Avenue, N.W.
Washington, DC 20210

2.) If the answer to the question in 1.) is yes, then an interested party (those affected by the action) can request review and reconsideration from the Wage and Hour Administrator (See 29 CFR Part 1.8 and 29 CFR Part 7). Write to:

Wage and Hour Administrator
U.S. Department of Labor
200 Constitution Avenue, N.W.
Washington, DC 20210

The request should be accompanied by a full statement of the interested party's position and by any information (wage payment data, project description, area practice material, etc.) that the requestor considers relevant to the issue.

3.) If the decision of the Administrator is not favorable, an interested party may appeal directly to the Administrative Review Board (formerly the Wage Appeals Board). Write to:

Administrative Review Board
U.S. Department of Labor
200 Constitution Avenue, N.W.
Washington, DC 20210

4.) All decisions by the Administrative Review Board are final.

=====

END OF GENERAL DECISION"

SPECIFICATIONS FOR CONSTRUCTION

1 GENERAL NOTES

- 1.1 THESE DESIGN DOCUMENTS WERE PREPARED BY 'VORTEX AQUATIC STRUCTURES INTERNATIONAL' FOR THE USE OF THEIR CLIENT ONLY. THE MATERIAL USED AND IDENTIFIED IN THEM REFLECTS VORTEX AQUATIC STRUCTURES INTERNATIONAL'S BEST JUDGMENT IN LIGHT OF THE INFORMATION AVAILABLE AT THE TIME OF PREPARATION. FOR THE PURPOSE OF THESE DESIGN DOCUMENTS, 'VORTEX AQUATIC STRUCTURES INTERNATIONAL' IS SYNONYMOUS WITH 'VORTEX'.
- 1.2 VORTEX ACCEPTS NO RESPONSIBILITY FOR DAMAGES, IF ANY, SUFFERED BY ANY THIRD PARTY AS A RESULT OF DECISIONS MADE OR ACTIONS BASED ON THESE DESIGN DOCUMENTS WITHOUT THE PREVIOUS CONSULTATION TO VORTEX.
- 1.3 ALL WORK, MATERIALS AND THEIR ASSEMBLIES SHALL CONFORM TO THE STANDARDS, REGULATIONS AND CODES CURRENTLY IN FORCE FOR ALL TRADES, AISC, ACNOR, EN, OR IBC.
- 1.4 THESE DESIGN DOCUMENTS DO NOT INDICATE THE METHOD OR MEANS OF CONSTRUCTION. WHEN APPLICABLE, THE CONTRACTORS SHALL SUPERVISE AND DIRECT ALL THE WORK AND SHALL BE SOLELY RESPONSIBLE FOR ALL CONSTRUCTION MEANS, METHODS, PROCEDURES AND SEQUENCES AS PER STANDARD BEST PRACTICES.
- 1.5 DO NOT SCALE DRAWINGS.
- 1.6 USE ONLY THOSE MARKED "ISSUED FOR CONSTRUCTION".
- 1.7 THE CONTRACTOR SHALL REVIEW THESE DESIGN DOCUMENTS AND REPORT ANY CONFLICTS OR OMISSIONS TO THE VORTEX IMMEDIATELY.
- 1.8 TEMPORARY SUPPORTS, WHICH WILL BE REQUIRED DURING CONSTRUCTION, SUCH AS FORMWORK, BRACING, SHORING, ETC. ARE NOT SHOWN ON THESE DRAWINGS AND ARE THE RESPONSIBILITY OF THE CONTRACTOR. THE CONTRACTOR IS RESPONSIBLE TO ENSURE THAT ALL SAFE CONSTRUCTION PROCEDUREs ARE FOLLOWED.
- 1.9 THE FOLLOWING SPECIFICATIONS ARE VORTEX'S MINIMUM RECOMMENDATIONS TO OBTAIN A QUALITY PRODUCT. THE CONTRACTOR SHALL FOLLOW THE LOCAL CODES IF MORE RESTRICTIVE.
- 1.10 ALL SEEFLOW COMPONENTS TO BE SNUG-TIGHT ONLY. USING POWER TOOLS OR TIGHTEN HARDWARE FULLY-TENSIONED CAN PRODUCE CRACKING ON THE PLASTIC.

2 EXCAVATION

- 2.1 ANY SHORING OR TEMPORARY SHORING NOT SHOWN ON DRAWINGS WILL BE EXECUTED, IN A SAFE MANNER, BY THE GENERAL CONTRACTOR.
- 2.2 IT IS THE RESPONSIBILITY OF OTHERS TO VERIFY THE EXISTENCE OF ANY UNDERGROUND SERVICES ETC.
- 2.3 IF AVAILABLE, REFER TO SOIL REPORT FOR BACKFILL REQUIREMENTS. ALL BACKFILL (FOR SLAB ON GRADE, ETC.) MUST BE DONE IN ACCORDANCE WITH THE RECOMMENDATIONS OF A QUALIFIED PROFESSIONAL. USE ONLY FREE DRAINING, GRANULAR, MINERAL, INERT AND NON- REACTIVE FILL.

3 FOUNDATIONS

- 3.1 REFER TO SOIL REPORT FOR RECOMMENDATIONS.
- 3.2 ALL FOOTINGS SHALL REST ON A HOMOGENEOUS LAYER OF UNDISTURBED SOIL OR ENGINEERED BACKFILL WITH A MINIMUM ALLOWABLE BEARING CAPACITY OF 100KPA (2000 PSF) AND MAXIMUM DIFFERENTIAL SETTLEMENT OF 19 MM (0.75"). ALL ORGANIC MATERIAL SHALL BE REMOVED.
- 3.3 IT IS THE CONTRACTOR'S RESPONSIBILITY TO ENSURE THAT THE SOIL AT ALL FOOTING LOCATIONS BE VERIFIED BY A QUALIFIED SOILS EXPERT BEFORE POURING FOOTINGS TO ENSURE FOOTINGS REST ON APPROPRIATE STRATA.
- 3.4 WHEN APPLICABLE, FOLLOW GEOTECHNICAL EXPERT RECOMMENDATIONS FOR ALL EXTERIOR FOOTINGS TO ENSURE FROST PROTECTION.

4 CONCRETE

- 4.1 ALL CONCRETE MATERIALS, PROCEDURES, TOLERANCES & WORKMANSHIP SHALL CONFORM TO THE LATEST ISSUES OF ACI-318 AND ACI 317 OR ACNOR CAN3-A23.1 & A23.2, DEPENDING ON PROJECT LOCATION.
- 4.2 CONCRETE THAT HAS BEEN IN THE TRUCKS LONGER THAN 2 HOURS SHALL BE REJECTED. DO NOT ADD WATER TO THE CONCRETE IN THE TRUCKS OR ON THE SITE UNDER ANY CIRCUMSTANCES.
- 4.3 USE MAXIMUM 76mm (3") SLUMP, 19mm (3/4") AGGREGATE, UNLESS OTHERWISE-NOTED. USE 5-7% AIR ENTRAINMENT FOR CONCRETE EXPOSED TO WEATHER ONLY.
- 4.4 ALL GROUT SHALL BE NON-SHRINK TYPE WITH A MINIMUM 28 DAYS STRENGTH OF 35.0 MPA (5000 PSI). USE 25 MM (1") GROUT UNDER ALL STEEL COLUMN BASE PLATES.
- 4.5 CONCRETE STRENGTH @ 28 DAYS TO BE:
- 4.5.1 FOUNDATIONS (FOOTINGS): 25.0 MPA (3500 PSI), UNLESS OTHERWISE NOTED.
- 4.5.2 INTERIOR SLAB ON GRADE: 25.0 MPa (3500 PSI), UNLESS OTHERWISE NOTED.
- 4.5.3 EXTERIOR SLAB ON GRADE: 32.0 MPa (4500 PSI), UNLESS OTHERWISE NOTED.
- 4.6 MINIMAL RE-BAR COVER:
- 4.6.1 CONCRETE POURED ON-GRADE = 76mm (3") COVER
- 4.6.2 CONCRETE POURED INTO FORMWORK BUT EXPOSED TO SOIL AND WEATHER FOR REBAR 15m (#4) AND UNDER = 50mm (2") COVER

5 REINFORCING STEEL

- 5.1 DEPENDING ON PROJECT LOCATION, ALL REINFORCING STEEL SHALL CONFORM TO ASTM A615 (BARS 15m (#4) TO BE GRADE 60 WITH SUPPLEMENTARY REQUIREMENTS ON S1. BARS SMALLER THAN 15m (#4), TO BE GRADE 40); OR TO ACNOR GRADE G30.12 [FY = 400MPa (60,000 PSI), UNLESS OTHERWISE NOTED].
- 5.2 USE CONCRETE, PLASTIC OR STEEL SUPPORT BARS, AS PER ACI (MANUAL OF STANDARD PRACTICE FOR DETAILING CONCRETE STRUCTURES). THE RE-BAR PLACER MUST REMAIN ON-SITE DURING POURS TO VERIFY CORRECT POSITIONING OF RE-BARS. SLANT UPPER REINFORCING STEEL IN LINE WITH THE SLOPE OF THE SLAB, IF APPLICABLE.
- 5.3 BARS SHALL BE SECURELY WIRED PER LATEST EDITION OF CRSI (RECOMMENDED PRACTICE FOR PLACING REINFORCING BARS).
- 5.4 ALL REINFORCING STEEL IS TO BE KEPT CLEAN AND FREE OF MUD, SNOW, ICE, AND ANY CONTAMINANTS.
- 5.5 VERTICAL AND CONTINUOUS REBAR SHALL BE LAPPED TO DEVELOP FULL TENSILE CAPACITY OF THE BAR. FOR 15M (#4) BARS MINIMUM LAP OF 610mm (24").

6 EXTERIOR / INTERIOR SLAB ON GRADE

- 6.1 FOLLOW THE GEOTECHNICAL EXPERT RECOMMENDATIONS FOR PREPARATION OF SOIL BEFORE POURING THE CONCRETE. ALL GRANULAR MATERIAL SHALL BE MOISTENED IMMEDIATELY BEFORE POURING THE CONCRETE. WATER AS NEEDED. DO NOT USE A VAPOR BARRIER.
- 6.2 NO TRUCKS ARE PERMITTED ON THE CONSTRUCTION SITE (OF THE SLAB) AFTER THE FINAL COMPACTION, EITHER BEFORE OR DURING, THE POUR.
- 6.3 SLAB TO BE MINIMUM 6" THICK, REINFORCED WITH 10m (#3) @ 300mm (12") C/C REBAR PLACED IN BOTH DIRECTIONS AT MID-HEIGHT OF THE SLAB, UNLESS OTHERWISE NOTED ON PLANS.FOR ELEVATION REQUIREMENT OF THICKENED SLAB, REFER TO ELEVATION INSTALLATION PACKAGE FOR DETAILS.
- 6.4 REFER TO CONCRETE SECTION FOR MINIMUM COMPRESSIVE STRENGTH AND AIR-ENTRAINMENT REQUIREMENTS.

6.5 FINISHING WILL BE MEDIUM BROOM.

- 6.6 CONTROL JOINTS (SAW-CUTS) TO BE LOCATED IN EACH DIRECTION, AT REGULAR INTERVALS, WITH A MAXIMUM DISTANCE OF 3 METERS (10 FEET). SHALL BE MINIMUM 3 MM (1/8") WIDE AND SHALL PENETRATE THE SLAB TO A MINIMUM DEPTH OF 1/3 OF THE THICKNESS OF THE SLAB. CONTROL JOINTS SHOULD BE DONE AS SOON AS POSSIBLE WITHOUT DAMAGING THE CONCRETE, BUT NO LATER THAN 18 HOURS AFTER POURING.
- 6.7 WHEN POSSIBLE AND TO AVOID SHRINKAGE CRACKING, HUMIDITY SHALL BE MAINTAINED FOR 7 DAYS DURING THE CURING PERIOD OF THE SLAB. WATER AND USE POLYETHYLENE CLOTH OR BAG. THE CONCRETE MUST DRY UNIFORMLY.

7 CONCRETE WORK IN COLD OR HOT WEATHER (MINIMUM REQUIREMENTS)

- 7.1 COLD WEATHER REQUIREMENTS APPLY WHEN THE MEAN AIR IS LESS THAN 5 DEGREES CELSIUS (40 DEGREES FAHRENHEIT).
- 7.2 GENERAL REQUIREMENTS FOR COLD WEATHER CONCRETE WORK SHALL BE AS PER ACI 306R-88; OR AS PER THE NBC'S LATEST REQUIREMENTS INCLUDING THE LATEST ISSUE OF CSA STANDARD CAN3-A23.1.
- 7.3 ALL SNOW AND ICE SHALL BE REMOVED FROM FORMS AND REBAR WITH STEAM AND COMPRESSED AIR BEFORE POURING. DO NOT USE DE-ICING SALT (CALCIUM CHLORIDE) OR ANY OTHER SALTS UNDER ANY CIRCUMSTANCES.
- 7.4 CONCRETE SHALL HAVE A MINIMUM TEMPERATURE OF 20 DEGREES CELSIUS AND A MAXIMUM TEMPERATURE OF 25 DEGREES CELSIUS WHILE POURING. IT IS THE CONTRACTOR'S RESPONSIBILITY TO ENSURE THAT THESE REQUIREMENTS ARE SATISFIED. ANY CONCRETE THAT DOES NOT CONFORM MUST BE REJECTED.
- 7.5 THE SURFACE OF POURED CONCRETE SHALL BE PROTECTED BY MEANS OF SUITABLE COVERINGS AND INSULATION (TO BE DETERMINED BY TEMPERATURE) DURING THE CURING PROCESS.
- 7.6 GENERAL REQUIREMENTS FOR HOT WEATHER CONCRETE WORK SHALL BE AS PER ACI 305R-99; OR AS PER LOCAL CODE REQUIREMENTS.

8 PIPING

- 8.1 WDS CONFIGURATION ARE SCHEMATIC AND MAY BE MOVED OR ADJUSTED ON SITE BY VORTEX CERTIFIED INSTALLER TO ADJUST FOR SITE CONDITIONS
- 8.2 ANY REQUIRED WATER METER ON THE CITY WATER MAIN SHALL BE PROVIDED BY INSTALLER. PRESSURE REGULATOR AND BACKFLOW PREVENTER WILL BE PROVIDED BY VORTEX.
- 8.3 ALL PIPE LINES TO FEATURES TO HAVE A 1% MINIMUM RECOMMENDED SLOPE FOR PROPER WINTERIZATION.
- 8.4 ALL LINE SIZING (FEATURE CONNECTION TABLE) ASSUMES A MAXIMUM DISTANCE OF 100 FEET BETWEEN THE WATER DISTRIBUTION MANIFOLD AND THE FURTHEST PLAY PRODUCT. DISTANCES ABOVE 100 FEET MAY REQUIRE AN INCREASE IN LINE SIZING. PLEASE CONTACT VORTEX.
- 8.5 QUANTITY AND LOCATION OF DRAINS BASED ON MAXIMUM FLOW FOR THE INDICATED PIPE DIAMETER AT 1% SLOPE. MODIFICATIONS MAY BE REQUIRED DUE TO SPECIFIC SITE CONDITIONS AND LOCAL CODE.

- 8.6 PRESSURE LINES ARE RECOMMENDED TO BE SCHEDULE 80 PVC OR PEX, AND NON-PRESSURE LINES TO BE SCHEDULE 40, UNLESS OTHERWISE REQUESTED BY LOCAL CODE.
- 8.7 DRAINAGE LINES ARE RECOMMENDED TO BE SDR 35, UNLESS OTHERWISE REQUESTED BY LOCAL CODE.
- 8.8 PIPING SHOULD BE INSPECTED AFTER TRANSPORTATION FOR CUTS, SCRATCHES, GOUGES OR SPLITS; DAMAGED SECTIONS MUST BE DISCARDED OR CUT OUT.
- 8.9 PIPE SHALL BE INSTALLED BELOW THE FROST LEVEL NOT LESS THAN 12" (ASTM F-645) UNLESS OTHERWISE REQUESTED BY LOCAL CODE.
- 8.10 PIPE INSTALLATION MINIMUM COVER SHOULD BE EVALUATED ACCORDING TO ASTM D-2774, UNLESS OTHERWISE REQUESTED BY LOCAL CODE.
- 8.11 SPECIAL CONSIDERATIONS SHOULD BE TAKEN FOR THERMAL CONDITIONS, EXPANSION AND CONTRACTIONS DUE TO TEMPERATURE SHOULD BE EVALUATED BEFORE THE INSTALLATION BY THE CONTRACTOR.
- 8.12 VALVE NUMBER 1 IS LOCATED TO THE LEFT OF THE MANIFOLD FACING THE SOLENOID.
- 8.13 MINIMUM 50 PSI REQUIRED AT THE INLET OF THE BACKFLOW PREVENTER AND PRESSURE REGULATING DEVICE.
- 8.14 MAXIMUM FLOW CAPACITY OF MANIFOLD IS 72 GPM.
- 8.15 TOTAL FLOW OF FEATURE IS 52.8 GPM.
- 8.16 FACTORY MAXIMUM SEQUENCING FLOW IS 37 GPM ACTUAL FLOW MAY VARY DUE TO SITE CONDITIONS.

9 ELECTRICAL

- 9.1 EQUIPMENT BONDING; FEATURES SHALL BE CONNECTED TO AN EQUIPOTENTIAL BONDING GRID WITH A SOLID RIGID COPPER CONDUCTOR, THE MINIMUM SIZE OF BONDING CONDUCTORS NOT BE SMALLER THAN #6 AMERICAN WIRE GAUGE (AWG) COPPER. BOND TO ALL METALLIC PARTS LOCATED IN THE SPLASHPAD/POOL AND TO THE REBAR, TO RUN CONTINUOUS TO THE WATER PUMP AND ELECTRICAL SUPPLY PANELS. SEE ELEVATION INSTALLATION DRAWING FOR BONDING DETAILS (BY INSTALLER).SPRAYLINKS FEATURE DO NOT REQUIRE BONDING.
- 9.2 GRID STRUCTURE; THE EQUIPOTENTIAL BONDING GRID SHALL COVER THE CONTOUR OF THE WATER BODY AREA AND ANY DECK EXTENDING 3FT (1m). HORIZONTALLY FROM THE INSIDE WALLS OF THE SPLASHPAD/WATER BODY. THE EQUIPOTENTIAL BONDING GRID SHALL BE ARRANGED IN A 12 IN (300mm). BY 12 IN (300mm). NETWORK OF CONDUCTORS IN A UNIFORMLY SPACED PERPENDICULAR GRID PATTERN WITH TOLERANCE OF 4 IN (100mm). A J-JUNCTION BOND CLAMP (DIRECT BURIAL CERTIFIED) CLAMPED TO A REBAR WITH WIRE LOOPED THROUGH CONNECTOR AND CLAMPED TO STEEL AND TO THE SPLASHPAD/POOL PUMP WATER
- 9.3 ALL ELECTRICAL EQUIPMENT SHALL BE GROUNDED; THE FOLLOWING EQUIPMENT SHALL BE GROUNDED. ALL ELECTRICAL EQUIPMENT LOCATED WITHIN 5FT (1.5 m) OF THE INSIDE WALL OF THE SPECIFIED BODY OF WATER." THIS EQUIPMENT ALSO INCLUDES (BUT NOT LIMITED TO): FEATURES, ELEVATIONS, DRAIN, REBAR, WATER INLET, SKIMMER, LADDER, SLIDES, DIVING STRUCTURE, UNDERWATER LIGHTING, JUNCTION BOXES, AND WATER CIRCULATING/HEATING EQUIPMENT.
- ALL BONDING AND GROUNDING MUST COMPLY WITH NEC, CEC, AND LOCAL CODES.

- 9.4 ALTERNATE MEANS; WHERE STRUCTURAL REINFORCING STEEL IS NOT AVAILABLE OR IS ENCAPSULATED IN A NONCONDUCTIVE COMPOUND, A COPPER CONDUCTOR(S) SHALL BE UTILIZED WHERE THE FOLLOWING REQUIREMENTS ARE MET: (1) AT LEAST ONE MINIMUM 6 AWG BARE SOLID COPPER CONDUCTOR SHALL BE PROVIDED. (2) THE CONDUCTORS SHALL FOLLOW THE CONTOUR OF THE PERIMETER SURFACE. (3) ONLY LISTED SPLICES SHALL BE PERMITTED. (4) THE REQUIRED CONDUCTOR SHALL BE 450 TO 18 TO 24 IN (600mm) FROM THE INSIDE WALLS OF THE POOL. (5) THE REQUIRED CONDUCTOR SHALL BE SECURED WITHIN OR UNDER THE PERIMETER SURFACE (4 IN TO 6 IN (100mm TO 150mm). BELOW THE SUBGRADE.

- 9.5 SPALSHPAD/POOL WATER; WHERE NONE OF THE BONDED PARTS IS IN DIRECT CONNECTION WITH THE POOL WATER, THE POOL WATER SHALL BE IN DIRECT CONTACT WITH AN APPROVED CORROSION-RESISTANT CONDUCTIVE SURFACE THAT EXPOSED NOT LESS THAN 9 IN.2 (5800mm²) OF SURFACE AREA TO THE POOL WATER AT ALL TIMES. THE CONDUCTIVE SURFACE SHALL BE LOCATED WHERE IT IS NOT EXPOSED TO PHYSICAL DAMAGE OR DISLODGEEMENT DURING USUAL POOL ACTIVITIES, AND IT SHALL BE BONDED IN ACCORDANCE WITH NEC, CEC, AND LOCAL CODES.



James Ahern Splashpad

James Ahern Splashpad

James Ahern Splashpad

James Ahern Splashpad

James Ahern Splashpad

James Ahern Splashpad

James Ahern Splashpad

James Ahern Splashpad

James Ahern Splashpad

James Ahern Splashpad

James Ahern Splashpad

James Ahern Splashpad

James Ahern Splashpad

James Ahern Splashpad

James Ahern Splashpad

James Ahern Splashpad

James Ahern Splashpad

James Ahern Splashpad

James Ahern Splashpad

James Ahern Splashpad

James Ahern Splashpad

James Ahern Splashpad

James Ahern Splashpad

James Ahern Splashpad

James Ahern Splashpad

James Ahern Splashpad

James Ahern Splashpad

James Ahern Splashpad

James Ahern Splashpad

James Ahern Splashpad

James Ahern Splashpad

James Ahern Splashpad

James Ahern Splashpad

James Ahern Splashpad

James Ahern Splashpad

James Ahern Splashpad

James Ahern Splashpad

James Ahern Splashpad

James Ahern Splashpad

James Ahern Splashpad

James Ahern Splashpad

James Ahern Splashpad

James Ahern Splashpad

James Ahern Splashpad

James Ahern Splashpad

James Ahern Splashpad

James Ahern Splashpad

James Ahern Splashpad

James Ahern Splashpad

James Ahern Splashpad

James Ahern Splashpad

James Ahern Splashpad

James Ahern Splashpad

James Ahern Splashpad

James Ahern Splashpad

James Ahern Splashpad

James Ahern Splashpad

James Ahern Splashpad

James Ahern Splashpad

James Ahern Splashpad

James Ahern Splashpad

James Ahern Splashpad

James Ahern Splashpad

James Ahern Splashpad

James Ahern Splashpad

James Ahern Splashpad

James Ahern Splashpad

James Ahern Splashpad

James Ahern Splashpad

James Ahern Splashpad



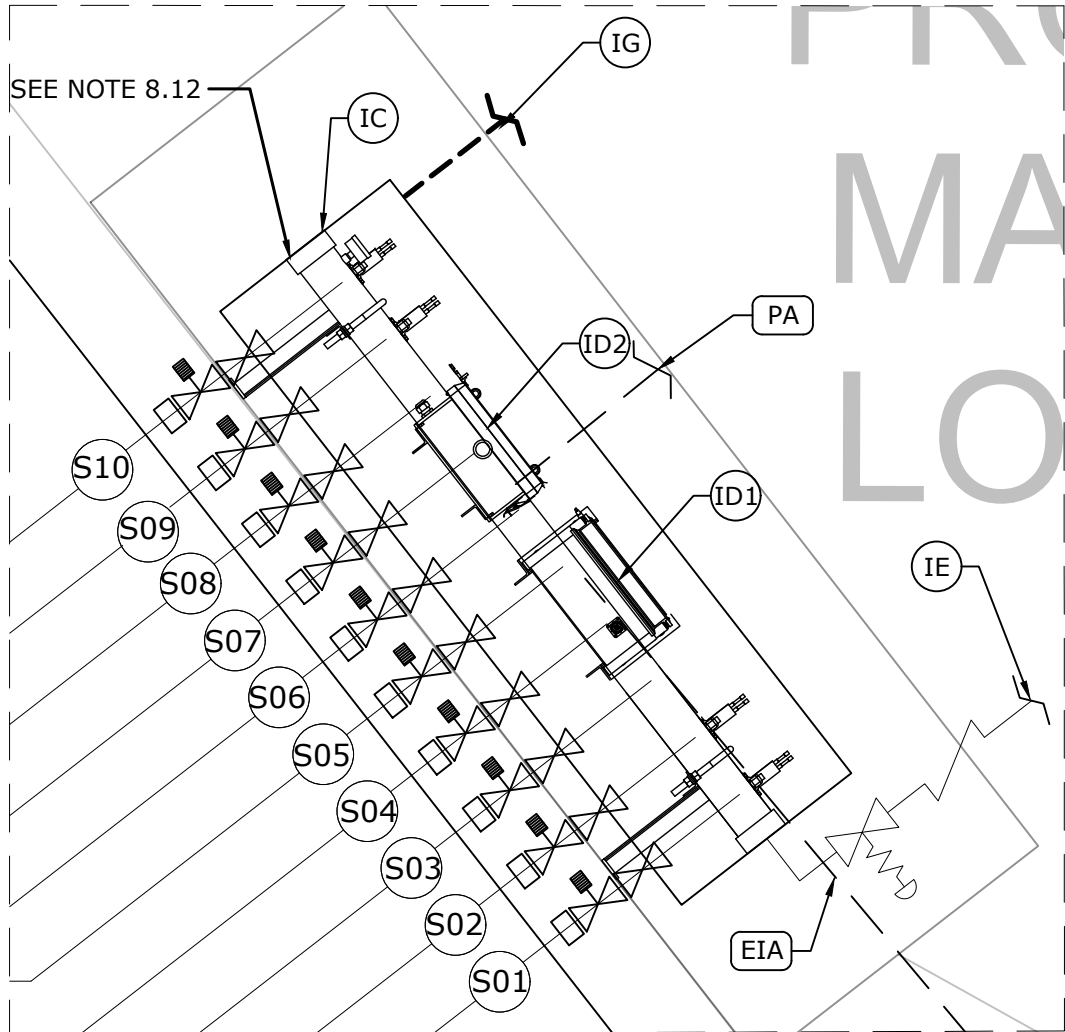
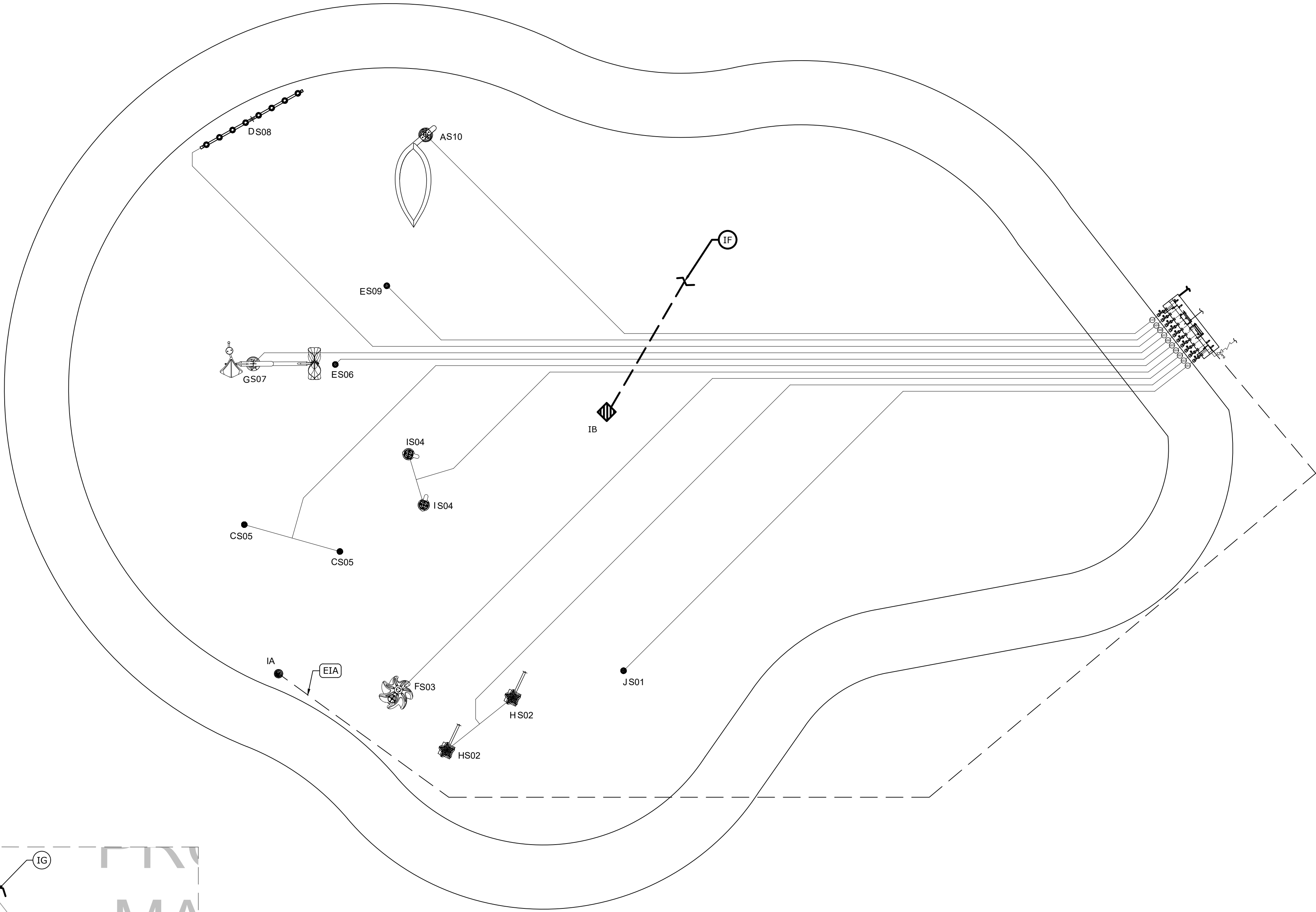
VORTEX AQUATIC STRUCTURES INTERNATIONAL

VORTEX USA Inc.
3500 South Dupont Highway, Suite EP-101
Dover, Delaware
United States 19901
Phone: +1 (877) 586-7839

STAMP

Abbreviations	
A	Architectural
C	Civil Work
P	Plumbing Layout
PD	Plumbing Details
E	Electrical Layout
ED	Electrical Details
FT	Feature Drawings

Drawing #	Drawing Name	Rev#
PE-001	Plumbing & Electrical Layout	00
E-003	Bonding Layout	00



Feature Connection Table							
Manifold Output Ref.	Splenoid PVC	Feature Ref.	Feature	Qty	Line Size	Gpm	Output (ID1)
S01	1" Std	J	Spraylink™ Fountain VOR 3007	1	1"	6	1
S02	1" Std	H	Hop Starfish VOR 7254	2	1"	7	2
S03	1" Std	F	Helio N°3 VOR 7238	1	1"	3	3
S04	1" Std	I	Refresh N°1 VOR 8767	2	1"	0.3	4
S05	1" Std	C	Spraylink™ Geyser VOR 3005	2	1"	10	5
S06	1" Std	E	Spraylink™ Jet N°1 VOR 3000	1	1"	2.5	6
S07	1" Std	G	Flower N°5 VOR 7557	1	1"	8	7
S08	1" Std	D	Spraylink™ Tunnel N°2 VOR 3055	1	1"	8	8
S09	1" Std	E	Spraylink™ Jet N°1 VOR 3000	1	1"	2.5	9
S10	1" Std	A	Leaf N°2 VOR 7657	1	1"	5.5	10

Electrical Line Connections Power					
Product Code	From	To	# Conductors	Gauge/Type	Note
PA	Main Power Line (by Other)	ID2 120VAC	3	TBD (by Other)	120V, 1 Phase, 60Hz, 10Amps Breaker Recommended ± 5% Voltage Drop is Acceptable

Electrical Line Connections Controller Inputs					
Product Code	From	To	# Conductors	Gauge/Type	Note
EIA	ID1-Input 1	IA	2	22	Activator No 4 24 VDC, Max 350 mA, Max 300' (100m) Long (by Installer)

Product Legend		
Product Ref.	Product	Qty
IA	Activator N°4 VOR 0622	1
IB	Drain (By Other)	1
IC	Water Distribution System WCC 2.0 Wall-Mounted Command Center	1
ID1	MaestroPRO Controller 24 out/ 12 in VOR-33907.3200	1
ID2	MaestroPRO Power Box VOR-33907.3200	1
IE	2" City Water Line (by Installer)	1
IF	6" Drain to Municipal Drain (by Installer)	1
IG	4" TYP Drain Line With Strainer Connected to Drainage System. Ensure P-Trap is Below Frost Line to Prevent Freezing. (by Installer)	1
	2" Pressure Regulator (by Vortex)	1
	2" Backflow Preventer (by Vortex)	1
	1" Solenoid Valve with Ball Valve & Union (by Vortex)	10



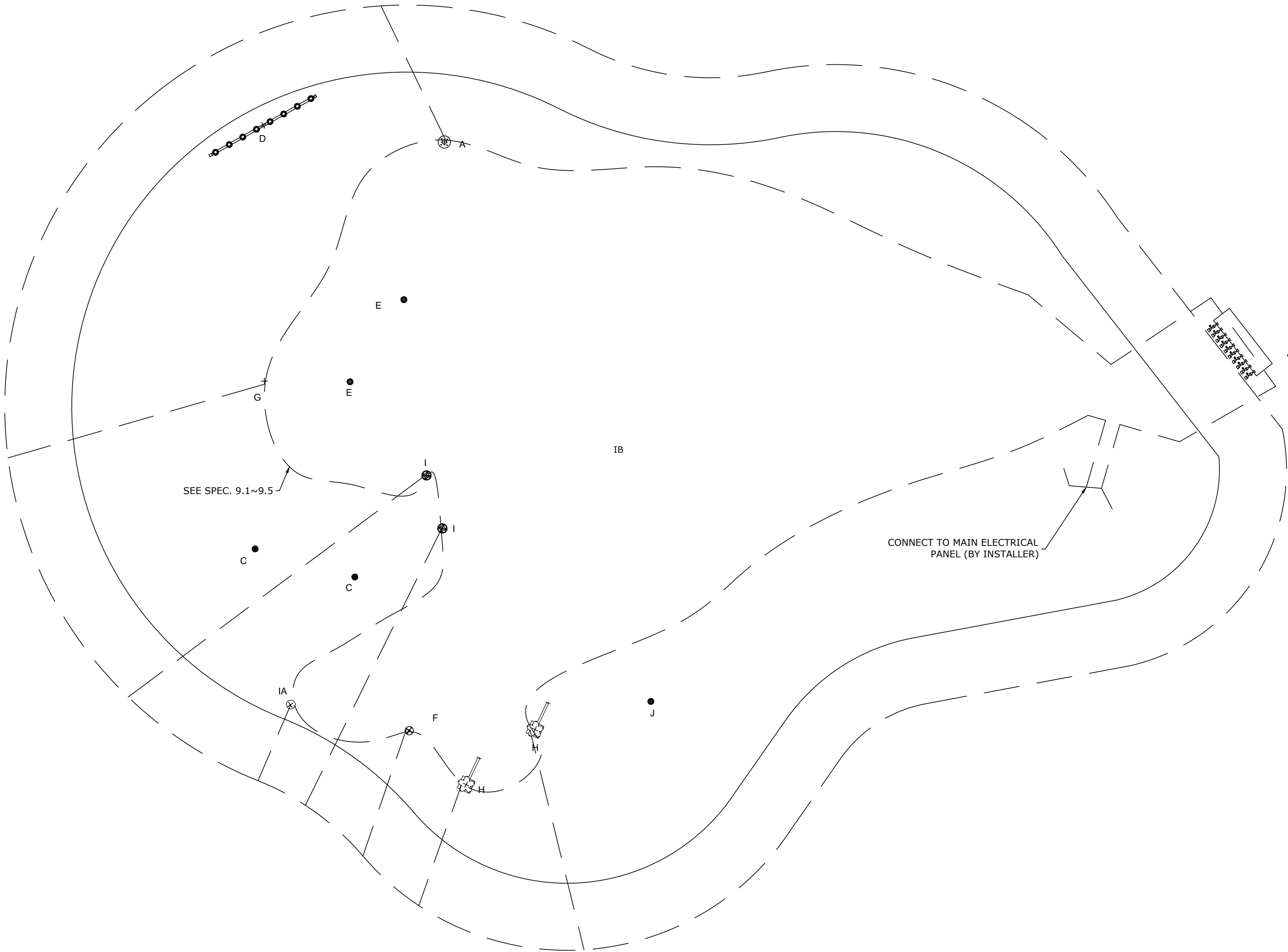
VORTEX USA Inc.
3500 South Dupont Highway, Suite EP-101
Dover, Delaware
United States 19901
Phone: +1 (877) 586-7839

COPYRIGHT VORTEX USA Inc-THIS DOCUMENT AND THE IDEAS, RENDERINGS AND OTHER CONTENTS CONTAINED THEREIN ARE THE SOLE PROPERTY OF VORTEX USA Inc AND MAY NOT BE DISSEMINATED, COPIED, REPRODUCED OR OTHERWISE USED WITHOUT PRIOR WRITTEN CONSENT OF VORTEX USA Inc.

James Ahern Splashpad

Project Location			
Rhode Island, US			
Project Number			
42375			
Version			
VC			
18/Oct/2024	Issued for Approval	00	BR
Date	Revision Description	No.	By
Drawing Title			
Plumbing & Electrical Layout			
Drawn by		Verified by	
BR		DS	
Scale		Date	
3/16"=1'-0"		18/Oct/2024	
Page #			
PE-001			

Ref	Product	Qty
A	Leaf N°2 VOR 7657	1
B	Activator N°4 VOR 0622	1
C	Spraylink™ Geyser VOR 3005	2
D	Spraylink™ Tunnel N°2 VOR 3055	1
E	Spraylink™ Jet N°1 VOR 3000	2
F	Helio N°3 VOR 7238	1
G	Flower N°5 VOR 7557	1
H	Hop Starfish VOR 7254	2
I	Refresh N°1 VOR 8767	2
J	Spraylink™ Fountain VOR 3007	1



1

E-003

BONDING LAYOUT

1. REFER TO SPECS ON COVER PAGE
2. COORDINATE THIS DRAWING WITH
ARCHITECTURAL, CIVIL, PLUMBING & ELECTRICAL.

BONDING WIRE -----



VORTEX USA Inc.
3500 South Dupont Highway, Suite EP-101
Dover, Delaware
United States 19901
Phone: +1 (877) 586-7839

COPYRIGHT VORTEX USA Inc-THIS DOCUMENT AND THE IDEAS, RENDERINGS AND OTHER CONTENTS CONTAINED THEREIN ARE THE SOLE PROPERTY OF VORTEX USA Inc AND MAY NOT BE DISSEMINATED, COPIED, REPRODUCED OR OTHERWISE USED WITHOUT PRIOR WRITTEN CONSENT OF VORTEX USA Inc.

James Ahern Splashpad

Project Location			
Rhode Island, US			
Project Number			
42375			
Version			
VC			
18/Oct/2024	Issued for Approval	00	BR
Date	Revision Description	No.	By
Drawing Title			
Bonding Layout			
Drawn by		Verified by	
BR		DS	
Scale		Date	
3/16"=1'-0"		18/Oct/2024	
Page #			
E-003			