



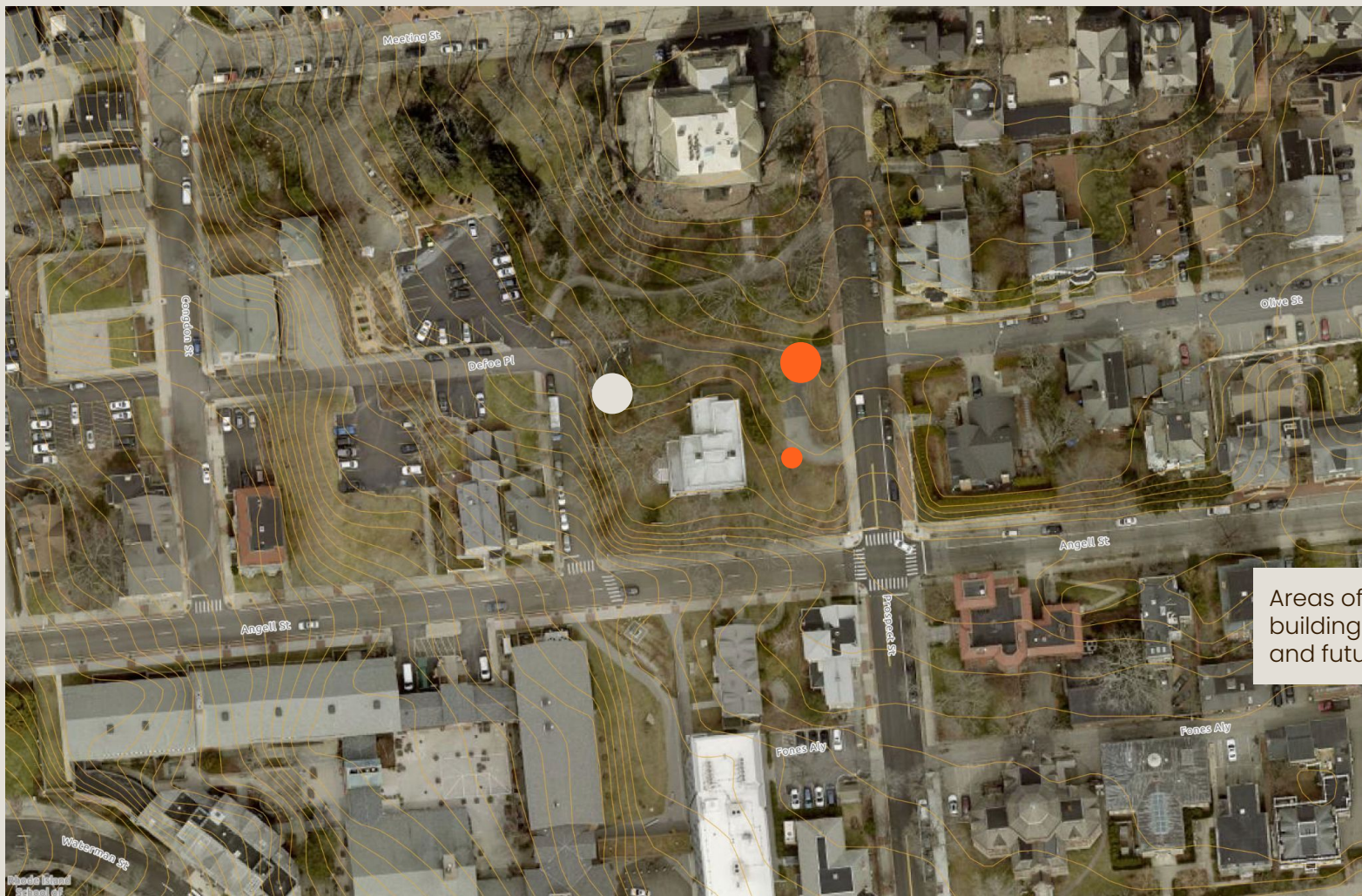
Historic Captain George Benson Mansion Circa 1797

Seeking conceptual approval for a new single-family home in the northeast quadrant of the parcel, along with the construction of a detached garage integrated into the hillside on the eastern lawn.

64 Angell Street



64 Angell Street
Providence Rhode Island



Areas of proposed buildings; both current and future phases

Project Elements

1 PRESERVE MANSION

Our plan is to meticulously restore the 6,300 SF historic Captain George Benson mansion to its original splendor. The restoration will be a complete rehabilitation of both the interior and exterior of the home



2 PRESERVE MANSION VIEWS

The two new structures proposed have been purposely placed on the site to preserve all views to and from the historic mansion.



3 PRESERVE SIGNIFICANT TREES

All significant trees are being protected and preserved. Additionally, existing historic retaining walls will be protected, restored, and incorporated into a cohesive landscape plan for the site's redevelopment



PROJECT ELEMENTS

1 PRESERVE MANSION

Architecturally significant interior and exterior elements of the home will be fully restored and repaired, seamlessly integrating with modern updates, including a renovated kitchen, upgraded building systems, and new roof and windows.



2 PRESERVE VIEWS

3 PRESERVE LANDSCAPE

PROJECT ELEMENTS

1 PRESERVE MANSION

2 PRESERVE VIEWS

The two proposed structures are designed to integrate seamlessly into the site while preserving all significant views to and from the historic mansion. Their forms ensure that the mansion remains the focal point of the site.



3 PRESERVE LANDSCAPE

PROJECT ELEMENTS

1 PRESERVE MANSION

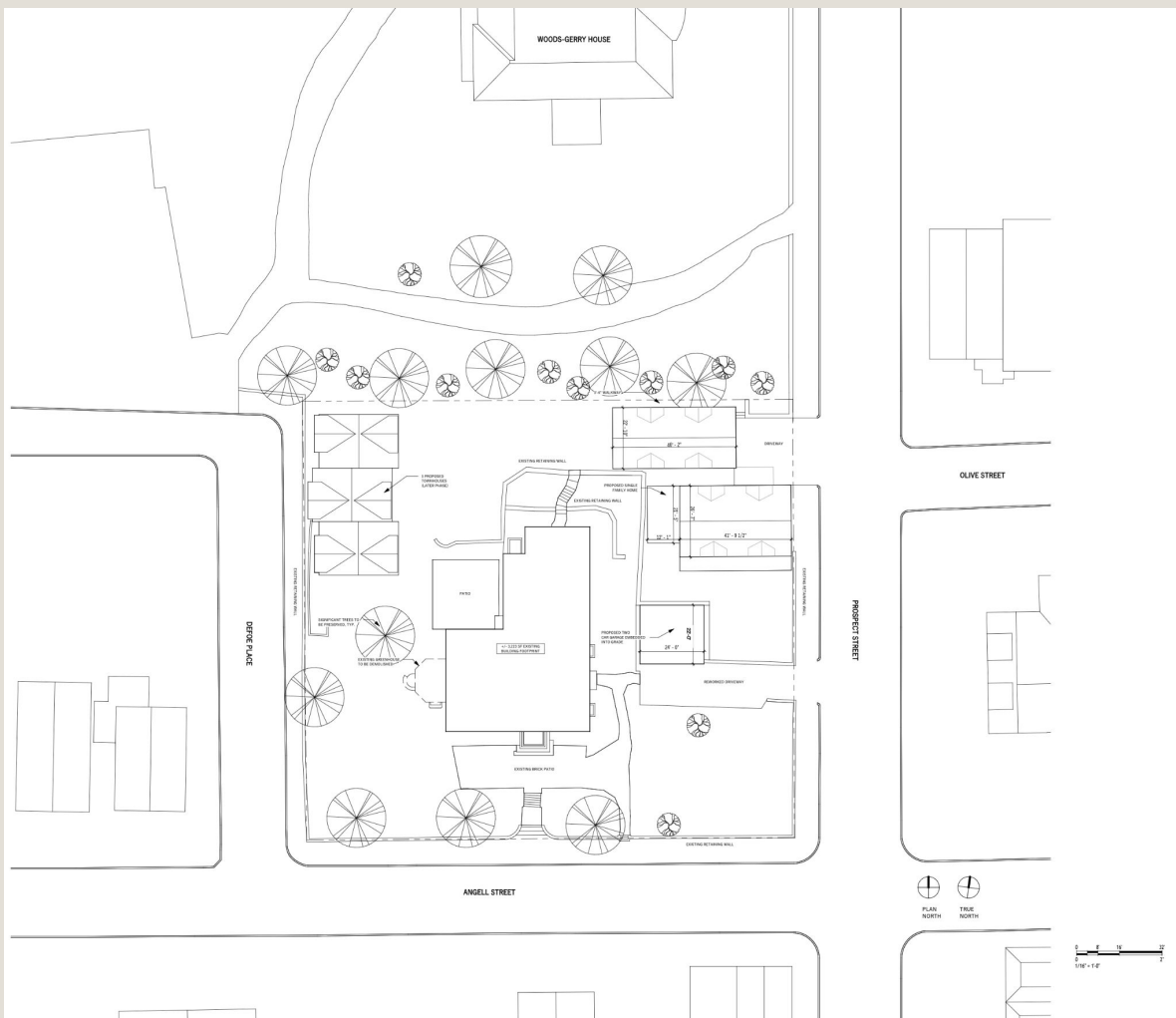
2 PRESERVE VIEWS

3 PRESERVE
LANDSCAPE

The site strategy prioritizes preserving significant trees, retaining walls, and the dense vegetation that has shaped the landscape for centuries.



SITE PLAN



DETACHED GARAGE DESIGN OVERVIEW

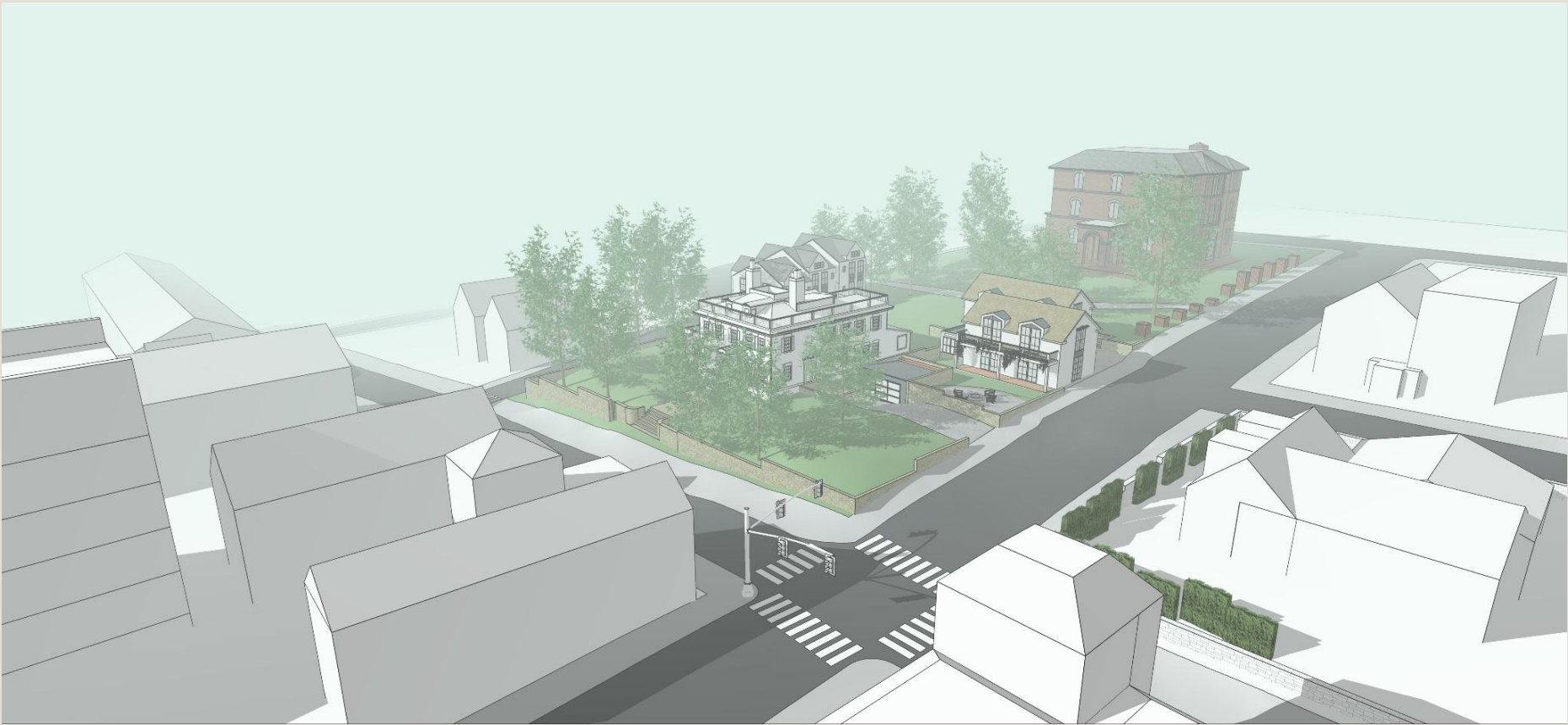
- The plan is to create a simple, detached two-car garage east of the mansion, recessed into the site's natural grading to preserve significant views.
- Embedded into the hillside, the garage is designed to minimize above-grade visibility.



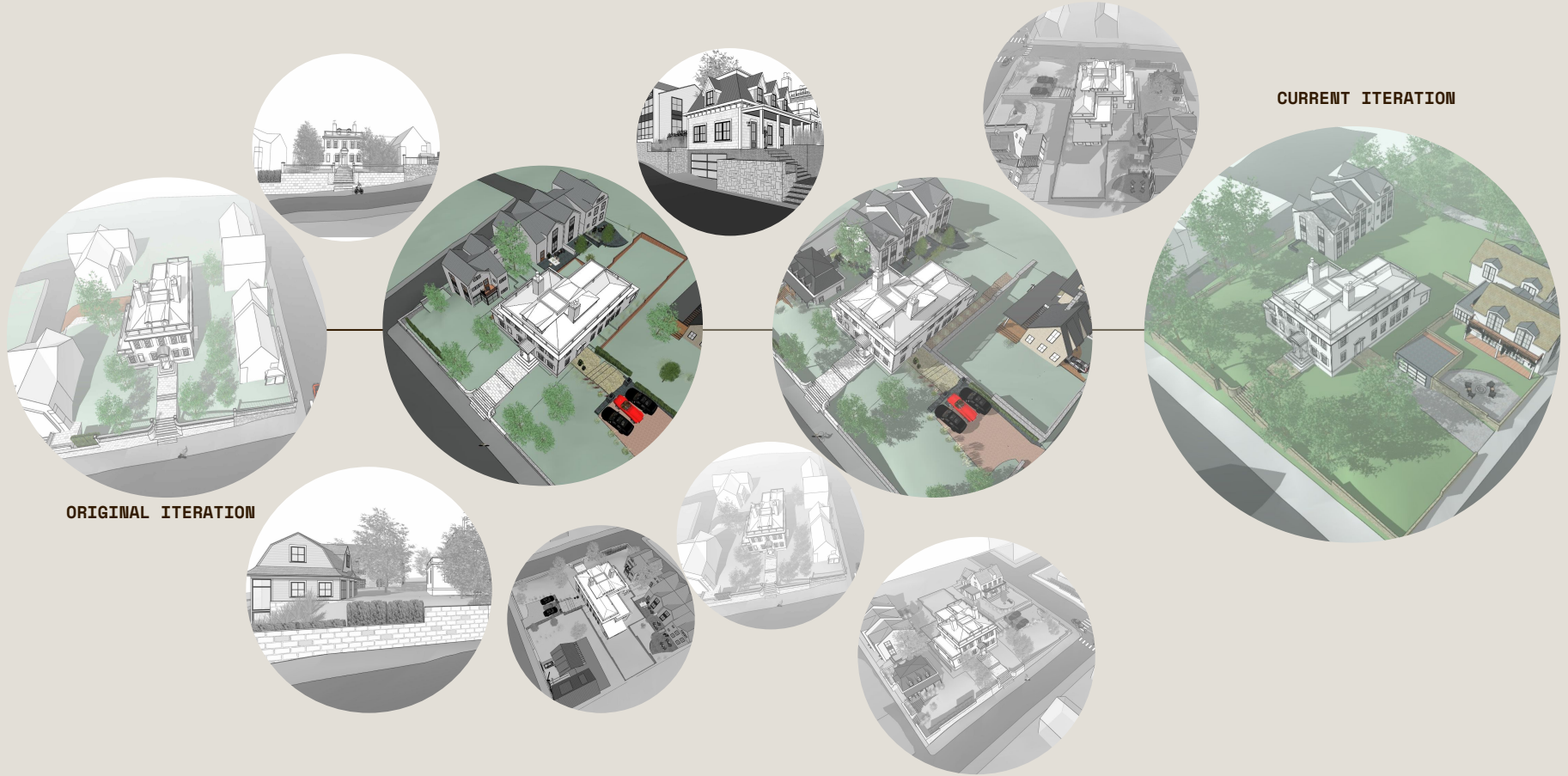
The design intent is to utilize the drop in grade between the sidewalk and the side entry of the house to embed a free-standing garage into the hillside, enveloped by a modified system of retaining walls that characterize the site.

SINGLE FAMILY HOME DESIGN OVERVIEW

- The design preserves the historic retaining wall wrapping the northeast corner of the mansion's side yard.
- The proposed single-family home is positioned along the northeast boundary to maintain significant views of the mansion as well as the Woods Gary House.
- The home is oriented to open up to the preserved eastern lawn of the mansion, allowing the Benson house to remain the site's focal point.
- Its massing is designed to complement the historic mansion while remaining secondary in presence.



PROJECT PROGRESS



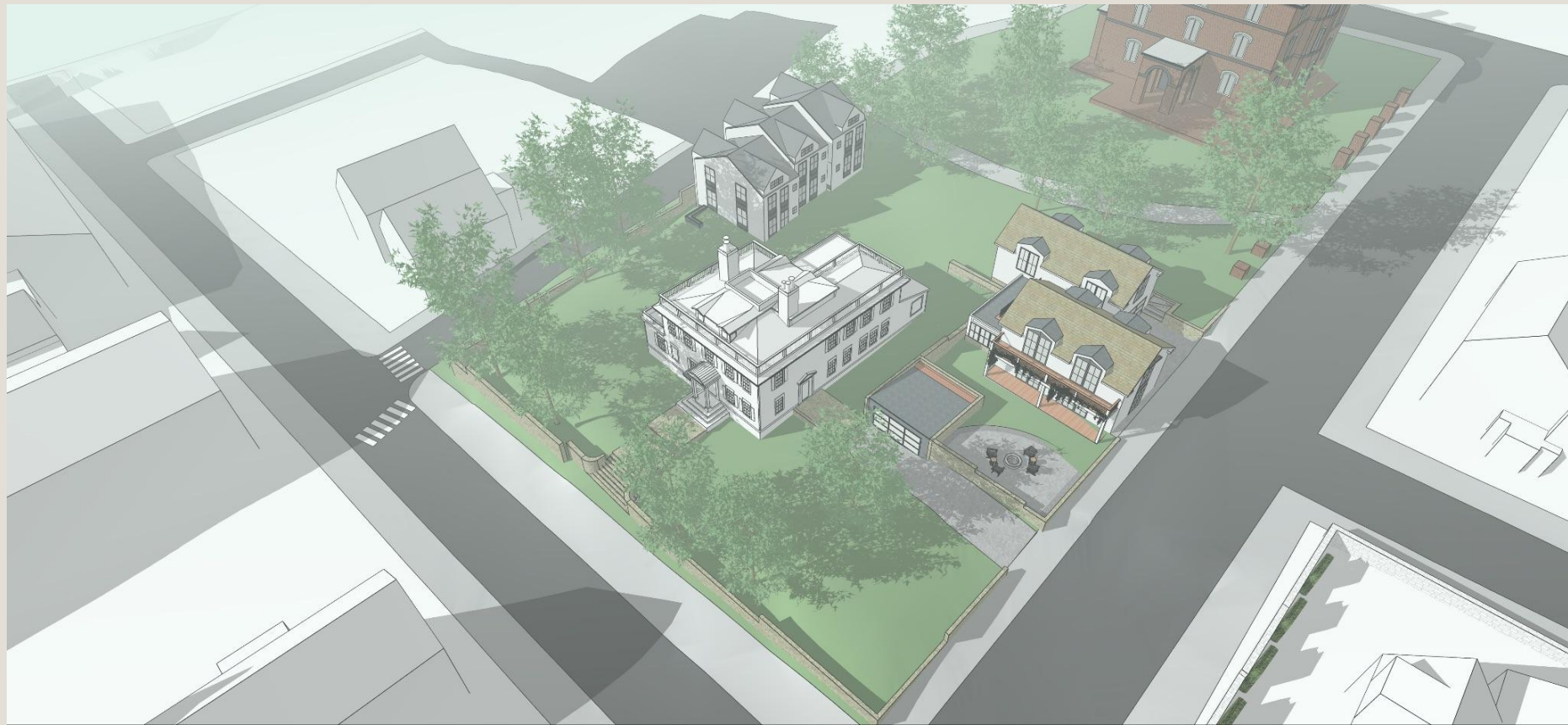






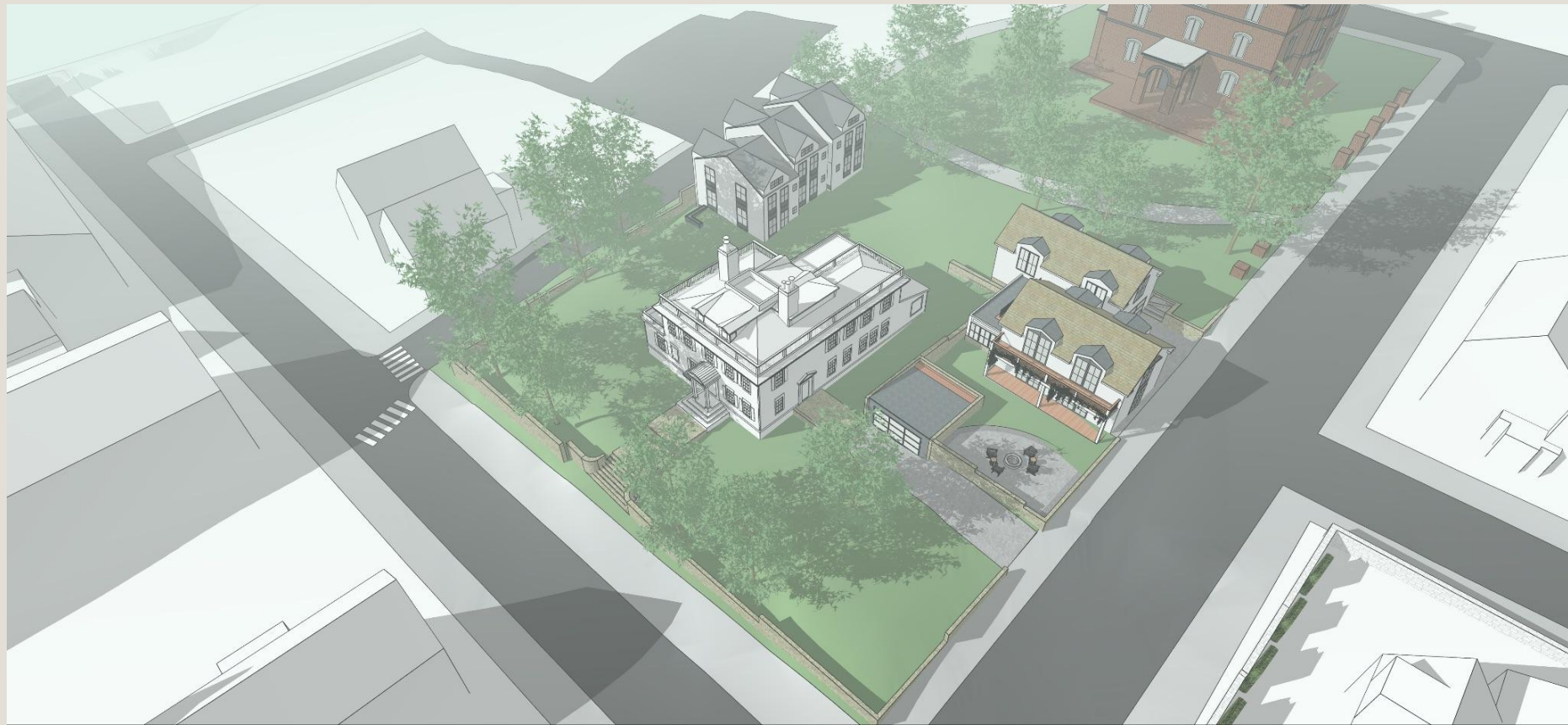


















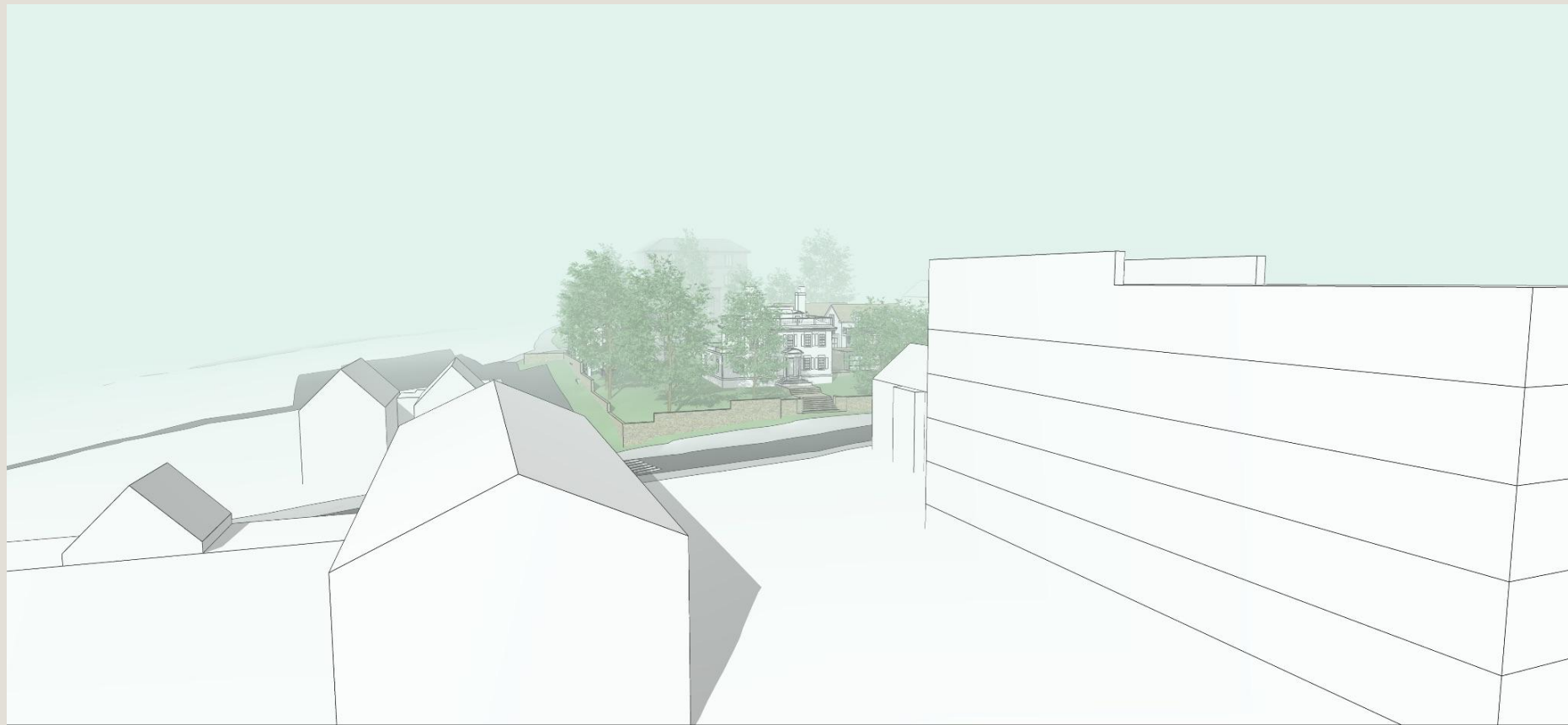


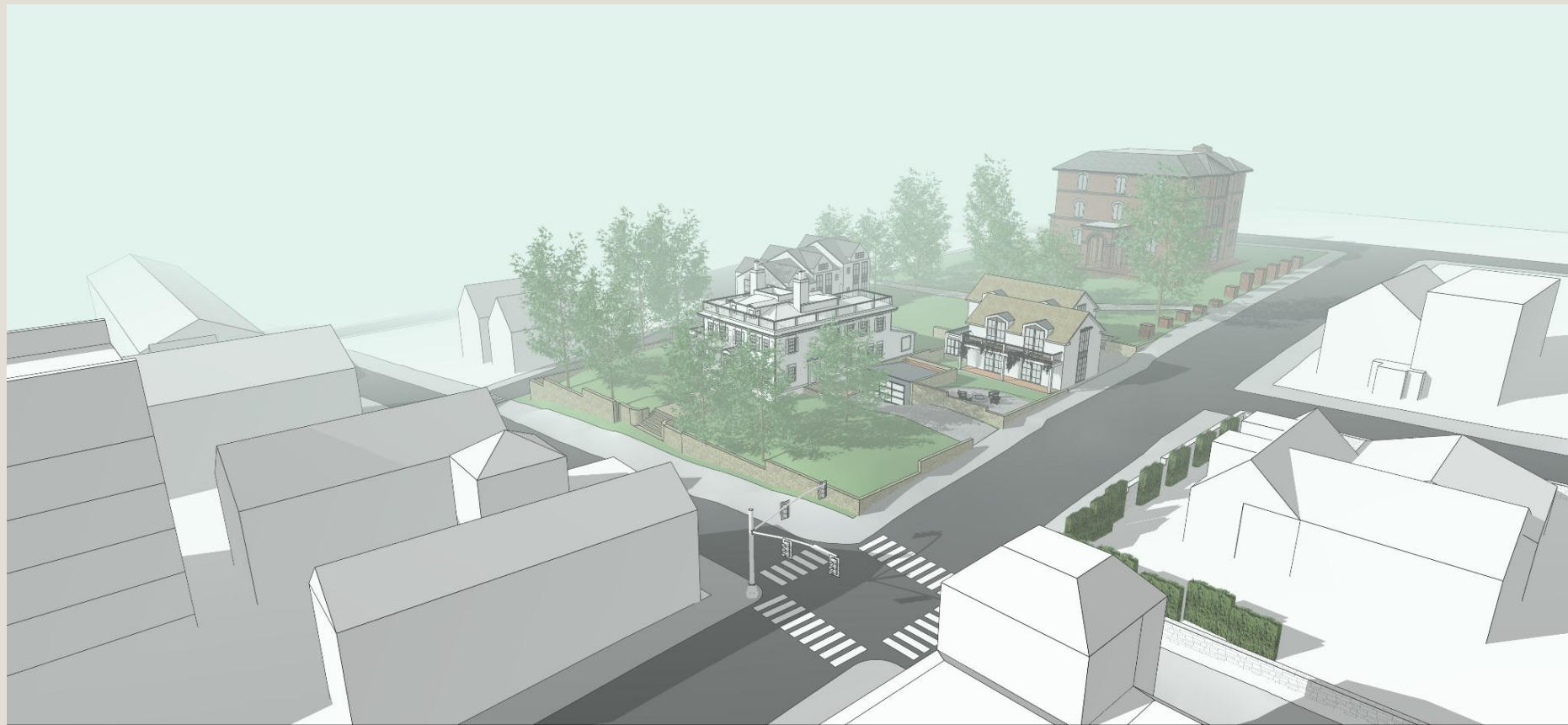














FOR CONTEXT: MASTERPLAN FOR 3 TOWNHOMES ALONG DEFOE PLACE AS LATER PHASE